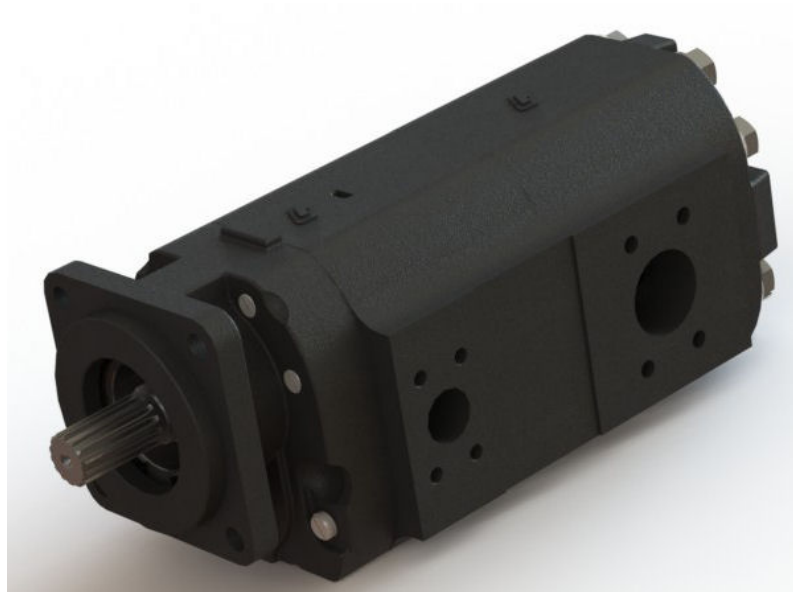


Permco



7600 Series Code Book

Disclaimer

THROUGH THE USE OF THIS CATALOG ALL THE COMPONENT PARTS OF ANY PERMCO PUMP OR MOTOR
CAN BE DETERMINED EXCLUDING FASTENERS.

THIS CODE BOOK IS FOR THE 7600 SERIES PUMPS AND MOTORS.

EACH MODEL SERIES IS DIVIDED IN THE FOLLOWING MANNER:

- I. SHAFT END COVERS FOLLOWED BY SHAFT END COVER SMALL PARTS.
- II. PORT END COVERS FOLLOWED BY PORT END COVER SMALL PARTS.
- III. GEAR HOUSINGS FOLLOWED BY:
 - A. GEAR HOUSING SMALL PARTS.
 - B. GEARS.
- IV. DRIVE SHAFTS OR GEAR/SHAFTS FOLLOWED BY DRIVE SHAFT SMALL PARTS.
- V. BEARING CARRIERS FOLLOWED BY BEARING CARRIER SMALL PARTS.
- VI. CONNECTING SHAFTS.

COPYRIGHT C AUGUST 1999 BY PERMCO, INC. ALL RIGHTS RESERVED. NO PART OF THIS BOOK
MAY BE REPRODUCED, STORED IN A RETRIEVAL SYSTEM, OR TRANSMITTED IN ANY FORM OR BY
ANY MEANS ELECTRONIC, MECHANICAL, PHOTOCOPYING, RECORDING, OR OTHERWISE
WITHOUT PRIOR WRITTEN PERMISSION OF PERMCO, INC.

How To

BELOW IS AN EXAMPLE OF HOW TO USE THIS CATALOG:

SINGLE ASSEMBLY CODE: P2100a031ADXK20-14
TANDEM ASSEMBLY CODE: P2100a031ADXK20-14BXE12-1

P	DENOTES PUMP (M DENOTES MOTOR)
7600	SERIES
A B OR C	MODEL TYPE (A-SINGLE B-TANDEM C-SPECIAL DRIVE SHAFT)
079	SHAFT END COVER
AD	PORT END COVER
NP20	GEAR HOUSING (FIRST)
6	DRIVE SHAFT
<hr/>	
B	BEARING CARRIER
NI12	GEAR HOUSING (SECOND)
1	CONNECTING SHAFT

THE ROTATION OF ANY UNIT IS IDENTIFIED BY THE FIRST DIGIT OF THE SHAFT END COVER CODE (SEE INDIVIDUAL SERIES COVER PAGES). THE GEAR SIZE IS DENOTED BY THE TWO (2) DIGITS IN THE GEAR HOUSING CODE.

CODE. :	05	07	10	12	15	17	20	22	25	27	30
SIZE IN INCHES:	1/2	3/4	1	1-1/4	1-1/2	1-3/4	2	2-1/4	2-1/2	2-3/4	3

ROTATION IS VIEWED LOOKING AT SHAFT END (SHAFT ON TOP.)
AN ASTERISK (*) DENOTES EITHER OBSOLETE OR SPECIAL. PLEASE CONSULT FACTORY AS THEY MAY BE REPLACED BY OTHER STANDARD ITEMS.

Abbreviations

Shaft End Cover Description

FT MT	FOOT MOUNT
G F TOP	GREASE FITTING ON TOP (OTHERS ON BOTTOM)
PAD MT	PAD MOUNT
PB	PIGGYBACK PUMP
PD	PILOT DIAMETER
PX	PILOT EXTENSION
RD FLG	ROUND FLANGE
W/MTG SLT	WITH MOUNTING SLOT
WD	WITH DRAIN
WD2	WITH DRAIN AT 2 OCLOCK POSITION
WD8	WITH DRAIN AT 8 OCLOCK POSITION
WD12	WITH DRAIN AT 12 OCLOCK POSITION
W2D	WITH 2 DRAINS

Port End Cover Description

OS	PORTS ARE OUT THE SIDE
PB	PIGGYBACK PUMP
XSD	EXTENDED STUDS

Shaft Description

T	TOOTH
PB	PIGGYBACK PUMP
W/THD END	WITH THREADED END

Porting Descriptions

ORB	STRAIGHT THREAD. PORT SIZE REFERS TO O.D. OF TUBE.
SF	SPLIT FLANGE PORTS. PORT SIZE REFERS TO FLANGE HOLE DIAMETER.
T	INTERNAL CONNECTIONS TO FRONT & BACK SECTION.
B	CONNECTION TO BACK SECTION.
F	CONNECTION TO FRONT SECTION.

Identification

STUD HOLES - 8 AT 11/16 DIAMETER
STUD DIA. - 5/8 IN.
ONE-PIECE DRIVE SHAFT AND GEAR (INTEGRAL)
HOUSING HEIGHT - 7-7/8 INCHES
HOUSING WIDTH - GEAR SIZE + 1 INCH
BOLT TORQUE - 200 FT-LBS

Gear Widths available

1/2 3/4 1 1-1/4 1-1/2 1-3/4 2 2-1/4 2-1/2 2-3/4 AND 3 INCHES

Shaft End Covers

THE TYPE OF SHAFT END COVER IS DETERMINED BY THE ENTIRE 3 DIGIT DESIGNATION.
THERE ARE TWO BASIC TYPES OF SHAFT END COVERS WHICH ARE DIFFERENTIATED BY THE BEARING CONFIGURATION.

THIS SERIES IS AVAILABLE BOTH WITH AND WITHOUT OUTBOARD BEARINGS.

TYPE I - WITH SINGLE OUTBOARD BALL BEARING OR WITHOUT.
TYPE II - WITHOUT OUTBOARD BEARING.

THE FIRST DIGIT OF THE SHAFT END COVER CODE DESIGNATES PUMP/MOTOR ROTATION.

ALL CODES BEGINNING WITH	CW	CCW	DBL	PUMP	MOTOR	BEARING
0	XX			XX		
1		XX		XX		
2			XX	XX		
3	XX			XX		XX
4		XX		XX		XX
5			XX	XX		XX
7			XX		XX	XX
8			XX		XX	

THE SHAFT END COVER TYPE AND DRIVE SHAFT TYPE MUST HAVE THE SAME NUMBER DESIGNATION.

Drive Shafts

C - DENOTES SPECIAL SEPARATE DRIVE SHAFT. (REFER TO CODING ILLUSTRATION ON INTRODUCTORY PAGES).
THESE CODES MUST BE USED IN CONJUNCTION WITH SHAFT END COVERS WHICH CONTAIN OUTBOARD BEARINGS. HOWEVER A DIFFERENT SHAFT SEAL IS REQUIRED. SEE DRIVE SHAFT PARTS.

Gears

CODES MARKED ^ ARE GEAR SETS FOR SINGLE UNIT APPLICATIONS.
CODES MARKED ~ ARE GEARS FOR HEAVY DUTY APPLICATIONS

Housings

1. CODES MARKED ' ARE FOR LOW PRESSURE INLET PORT ONLY.
2. CODES MARKED + ARE GOOD FOR PRESSURES UP TO 2500 PSI. APPLIES TO SMALLEST PORT.
3. ORB PORTS ARE RECOMMENDED FOR USE AT PRESSURES UP TO 2500 PSI.
FOR HIGHER PRESSURES CONSULT FACTORY.
4. SPLIT FLANGE PORTS ARE RECOMMENDED FOR PRESSURES ABOVE 2500 PSI.
CONSULT FACTORY FOR CORRECT PORTING.
5. NPT THREADS ARE NOT RECOMMENDED FOR US AT PRESSURES EXCEEDING 2000 PSI.

Bearing Carriers

FOR MULTIPLE MOTORS USE A AA BB LL OR MM CODES. DO NOT USE IN PUMPS.

Bearing Carrier Flow

FLOW THROUGH BEARING CARRIER (EXAMPLE: FEEDING REAR SECTION OF PUMP FROM FRONT GEAR HOUSING) MUST NOT EXCEED 35 GPM. UNDER NO CIRCUMSTANCE SHOULD SUCTION FLOW EXCEED A SPEED OF OVER 8 FPS.

Accessories

Plastic Plugs	
Port Size	Part No.
NPT & BSPP	
1/8"	#8
1/4"	#11
3/8"	#17
1/2"	#23
3/4"	#30
1"	#42
1-1/4"	#53
1-1/2"	#57
2"	#68
2-1/2"	#78
SAE ORB	
1/2"	#23
3/8"	#17
5/8"	#27
3/4"	#35
7/8"	#42
1"	#44
1-1/4"	#53
1-1/2"	#57
2"	#68
SF & Metric SF	
1/2"	#12
3/4"	B-831-213
1"	B-831-214
1-1/4"	B-831-215
1-1/2"	B-831-216
2"	B-831-217
2-1/2"	B-831-218

Fasteners for Single Units			
Gear Size	Part No.	Bolt Length	Qty.
1/2"	W1-13	4"	8
3/4"	W1-58	4-1/2"	8
1"	W1-14	5"	8
1-1/4"	W1-14	5"	8
1-1/2"	W1-78	5-1/2"	8
1-3/4"	W1-78	5-1/2"	8
2"	W1-65	6"	8
2-1/4"	W1-65	6"	8
2-1/2"	W1-89	6-1/2"	8
2-3/4"	W1-89	6-1/2"	8
3"	W1-64	7"	8
Washer Part No.		W033-2	8

Shaft Protectors	
SP-1000-4	1-1/4" Splined & 1-1/8"Dia
SP-1000-5	1-1/4" Dia Keyed
Shaft Protector for Extended Studs	
SP-1000-7	

Fasteners for Multi-Section Units		
Add Total Gear Width to the length provided below to obtain stud length		
	Flush	Extended
2 Section	8.56	10.56
3 Section	12.56	14.56
4 Section	16.56	18.56
Washer #	W033-2	8
Nut #	W3-65	8

Available Stud Lengths	
Stud Part No.	Description
ZD-0391-08	5/8-11 x 8"
ZD-0391-875	5/8-11 x 8.75"
ZD-0391-09	5/8-11 x 9"
ZD-0391-095	5/8-11 x 9.5"
ZD-0391-10	5/8-11 x 10"
ZD-0391-105	5/8-11 x 10.5"
ZD-0391-112	5/8-11 x 11.25"
ZD-0391-12	5/8-11 x 12"
ZD-0391-125	5/8-11 x 12.5"
ZD-0391-132	5/8-11 x 13.25"
ZD-0391-14	5/8-11 x 14"
ZD-0391-142	5/8-11 x 14.25"
ZD-0391-16	5/8-11 x 16"
ZD-0391-18	5/8-11 x 18"
ZD-0391-20	5/8-11 x 20"
ZD-0391-22	5/8-11 x 22"
ZD-0391-24	5/8-11 x 24"
ZD-0391-26	5/8-11 x 26"
ZD-0391-28	5/8-11 x 28"
ZD-0391-30	5/8-11 x 30"
ZD-0391-36	5/8-11 x 36"
ZD-0391-40	5/8-11 x 40"

Shaft End cover Codes

Code	QTY	Part Number	Description
031	1	RA-0574-3D	CW 7600 Pump Type I SEC with SAE "B" (4" Diameter) 4 Bolts No Outboard Bearing
067	1	SA-0574-3D	CW 7600 Pump Type I SEC with SAE "C" (5" Diameter) 4 Bolts No Outboard Bearing
079	1	TA-0574-3D	CW 7600 Pump Type I SEC with SAE "D" (6" Diameter) 4 Bolts No Outboard Bearing
086	1	574-01671D	CW 7600 Pump Type I SEC with SAE "B" (4" Diameter) 2 Bolts No Outboard Bearing
087	1	UA-0574-3D	CW 7600 Pump Type I SEC with SAE "C" (5" Diameter) 2 Bolts No Outboard Bearing
131	1	RA-0574-3D	CCW 7600 Pump Type I SEC with SAE "B" (4" Diameter) 4 Bolts No Outboard Bearing
167	1	SA-0574-3D	CCW 7600 Pump Type I SEC with SAE "C" (5" Diameter) 4 Bolts No Outboard Bearing
179	1	TA-0574-3D	CCW 7600 Pump Type I SEC with SAE "D" (6" Diameter) 4 Bolts No Outboard Bearing
186	1	574-01671D	CCW 7600 Pump Type I SEC with SAE "B" (4" Diameter) 2 Bolts No Outboard Bearing
187	1	UA-0574-3D	CCW 7600 Pump Type I SEC with SAE "C" (5" Diameter) 2 Bolts No Outboard Bearing
231	1	RA-0574-3D	Bi-Rotation 7600 Pump Type I SEC with SAE "B" (4" Diameter) 4 Bolts No Outboard Bearing
267	1	SA-0574-3D	Bi-Rotation 7600 Pump Type I SEC with SAE "C" (5" Diameter) 4 Bolts No Outboard Bearing
279	1	TA-0574-3D	Bi-Rotation 7600 Pump Type I SEC with SAE "D" (6" Diameter) 4 Bolts No Outboard Bearing
286	1	574-01671D	Bi-Rotation 7600 Pump Type I SEC with SAE "B" (4" Diameter) 2 Bolts No Outboard Bearing
287	1	UA-0574-3D	Bi-Rotation 7600 Pump Type I SEC with SAE "C" (5" Diameter) 2 Bolts No Outboard Bearing
331	1	RA-0574-3D	CW 7600 Pump Type I SEC with SAE "B" (4" Diameter) 4 Bolts With Outboard Bearing
367	1	SA-0574-3D	CW 7600 Pump Type I SEC with SAE "C" (5" Diameter) 4 Bolts With Outboard Bearing
379	1	TA-0574-3D	CW 7600 Pump Type I SEC with SAE "D" (6" Diameter) 4 Bolts With Outboard Bearing
386	1	574-01671D	CW 7600 Pump Type I SEC with SAE "B" (4" Diameter) 2 Bolts With Outboard Bearing
387	1	UA-0574-3D	CW 7600 Pump Type I SEC with SAE "C" (5" Diameter) 2 Bolts With Outboard Bearing
431	1	RA-0574-3D	CCW 7600 Pump Type I SEC with SAE "B" (4" Diameter) 4 Bolts With Outboard Bearing
467	1	SA-0574-3D	CCW 7600 Pump Type I SEC with SAE "C" (5" Diameter) 4 Bolts With Outboard Bearing
479	1	TA-0574-3D	CCW 7600 Pump Type I SEC with SAE "D" (6" Diameter) 4 Bolts With Outboard Bearing
486	1	574-01671D	CCW 7600 Pump Type I SEC with SAE "B" (4" Diameter) 2 Bolts With Outboard Bearing
487	1	UA-0574-3D	CCW 7600 Pump Type I SEC with SAE "C" (5" Diameter) 2 Bolts With Outboard Bearing
531	1	RA-0574-3D	Bi-Rotation 7600 Pump Type I SEC with SAE "B" (4" Diameter) 4 Bolts With Outboard Bearing

Shaft End cover Codes

Code	QTY	Part Number	Description
567	1	SA-0574-3D	Bi-Rotation 7600 Pump Type I SEC with SAE "C" (5" Diameter) 4 Bolts With Outboard Bearing
579	1	TA-0574-3D	Bi-Rotation 7600 Pump Type I SEC with SAE "D" (6" Diameter) 4 Bolts With Outboard Bearing
586	1	574-01671D	Bi-Rotation 7600 Pump Type I SEC with SAE "B" (4" Diameter) 2 Bolts With Outboard Bearing
587	1	UA-0574-3D	Bi-Rotation 7600 Pump Type I SEC with SAE "C" (5" Diameter) 2 Bolts With Outboard Bearing
731	1	RA-0574-4D	Bi-Rotation 7600 Motor Type I SEC with SAE "B" (4" Diameter) 4 Bolts With Outboard Bearing
767	1	SA-0574-4D	Bi-Rotation 7600 Motor Type I SEC with SAE "C" (5" Diameter) 4 Bolts With Outboard Bearing
779	1	TA-0574-4D	Bi-Rotation 7600 Motor Type I SEC with SAE "D" (6" Diameter) 4 Bolts With Outboard Bearing
786	1	574-01671-4D	Bi-Rotation 7600 Motor Type I SEC with SAE "B" (4" Diameter) 2 Bolts With Outboard Bearing
787	1	UA-0574-4D	Bi-Rotation 7600 Motor Type I SEC with SAE "C" (5" Diameter) 2 Bolts With Outboard Bearing
831	1	RA-0574-4D	Bi-Rotation 7600 Motor Type I SEC with SAE "B" (4" Diameter) 4 Bolts No Outboard Bearing
867	1	SA-0574-4D	Bi-Rotation 7600 Motor Type I SEC with SAE "C" (5" Diameter) 4 Bolts No Outboard Bearing
879	1	TA-0574-4D	Bi-Rotation 7600 Motor Type I SEC with SAE "D" (6" Diameter) 4 Bolts No Outboard Bearing
886	1	574-01671-4D	Bi-Rotation 7600 Motor Type I SEC with SAE "B" (4" Diameter) 2 Bolts No Outboard Bearing
887	1	UA-0574-4D	Bi-Rotation 7600 Motor Type I SEC with SAE "C" (5" Diameter) 2 Bolts No Outboard Bearing

Shaft End cover Small Parts Codes

Code	QTY	Part Number	Description
031	2	K-2995-164	O'RING
031	2	Q-0921	ROLLER BEARING
031	1	QZ-0961	SEAL RETAINER
031	1	S-0280	PLUG
031	1	UA-0558	BEARING SPACER
031	1	VA-0558-1XS	RING SEAL
031	1	W62-26-10	DOUBLE LIP SEAL
031	1	W85-315	RETAINER RING
067	2	K-2995-164	O'RING
067	2	Q-0921	ROLLER BEARING
067	1	QZ-0961	SEAL RETAINER
067	1	S-0280	PLUG
067	1	UA-0558	BEARING SPACER
067	1	VA-0558-1XS	RING SEAL
067	1	W62-26-10	DOUBLE LIP SEAL
067	1	W85-315	RETAINER RING
079	2	K-2995-164	O'RING
079	2	Q-0921	ROLLER BEARING
079	1	QZ-0961	SEAL RETAINER
079	1	S-0280	PLUG
079	1	UA-0558	BEARING SPACER
079	1	VA-0558-1XS	RING SEAL
079	1	W62-26-10	DOUBLE LIP SEAL
079	1	W85-315	RETAINER RING
086	2	K-2995-164	O'RING
086	2	Q-0921	ROLLER BEARING
086	1	QZ-0961	SEAL RETAINER
086	1	S-0280	PLUG
086	1	UA-0558	BEARING SPACER
086	1	VA-0558-1XS	RING SEAL
086	1	W62-26-10	DOUBLE LIP SEAL
086	1	W85-315	RETAINER RING
087	2	K-2995-164	O'RING
087	2	Q-0921	ROLLER BEARING

Shaft End cover Small Parts Codes

Code	QTY	Part Number	Description
087	1	QZ-0961	SEAL RETAINER
087	1	S-0280	PLUG
087	1	UA-0558	BEARING SPACER
087	1	VA-0558-1XS	RING SEAL
087	1	W62-26-10	DOUBLE LIP SEAL
087	1	W85-315	RETAINER RING
131	2	K-2995-164	O'RING
131	2	Q-0921	ROLLER BEARING
131	1	QZ-0961	SEAL RETAINER
131	1	S-0280	PLUG
131	1	UA-0558	BEARING SPACER
131	1	VA-0558-1XS	RING SEAL
131	1	W62-26-10	DOUBLE LIP SEAL
131	1	W85-315	RETAINER RING
167	2	K-2995-164	O'RING
167	2	Q-0921	ROLLER BEARING
167	1	QZ-0961	SEAL RETAINER
167	1	S-0280	PLUG
167	1	UA-0558	BEARING SPACER
167	1	VA-0558-1XS	RING SEAL
167	1	W62-26-10	DOUBLE LIP SEAL
167	1	W85-315	RETAINER RING
179	2	K-2995-164	O'RING
179	2	Q-0921	ROLLER BEARING
179	1	QZ-0961	SEAL RETAINER
179	1	S-0280	PLUG
179	1	UA-0558	BEARING SPACER
179	1	VA-0558-1XS	RING SEAL
179	1	W62-26-10	DOUBLE LIP SEAL
179	1	W85-315	RETAINER RING
186	2	K-2995-164	O'RING
186	2	Q-0921	ROLLER BEARING
186	1	QZ-0961	SEAL RETAINER
186	1	S-0280	PLUG

Shaft End cover Small Parts Codes

Code	QTY	Part Number	Description
186	1	UA-0558	BEARING SPACER
186	1	VA-0558-1XS	RING SEAL
186	1	W62-26-10	DOUBLE LIP SEAL
186	1	W85-315	RETAINER RING
187	2	K-2995-164	O'RING
187	2	Q-0921	ROLLER BEARING
187	1	QZ-0961	SEAL RETAINER
187	1	S-0280	PLUG
187	1	UA-0558	BEARING SPACER
187	1	VA-0558-1XS	RING SEAL
187	1	W62-26-10	DOUBLE LIP SEAL
187	1	W85-315	RETAINER RING
231	2	K-2995-164	O'RING
231	2	L-0280-K	CHECK VALVE ASSEMBLY
231	2	Q-0921	ROLLER BEARING
231	1	QZ-0961	SEAL RETAINER
231	1	UA-0558	BEARING SPACER
231	1	VA-0558-1XS	RING SEAL
231	1	W62-26-10	DOUBLE LIP SEAL
231	1	W85-315	RETAINER RING
267	2	K-2995-164	O'RING
267	2	L-0280-K	CHECK VALVE ASSEMBLY
267	2	Q-0921	ROLLER BEARING
267	1	QZ-0961	SEAL RETAINER
267	1	UA-0558	BEARING SPACER
267	1	VA-0558-1XS	RING SEAL
267	1	W62-26-10	DOUBLE LIP SEAL
267	1	W85-315	RETAINER RING
279	2	K-2995-164	O'RING
279	2	L-0280-K	CHECK VALVE ASSEMBLY
279	2	Q-0921	ROLLER BEARING
279	1	QZ-0961	SEAL RETAINER
279	1	UA-0558	BEARING SPACER
279	1	VA-0558-1XS	RING SEAL

Shaft End cover Small Parts Codes

Code	QTY	Part Number	Description
279	1	W62-26-10	DOUBLE LIP SEAL
279	1	W85-315	RETAINER RING
286	2	K-2995-164	O'RING
286	2	L-0280-K	CHECK VALVE ASSEMBLY
286	2	Q-0921	ROLLER BEARING
286	1	QZ-0961	SEAL RETAINER
286	1	UA-0558	BEARING SPACER
286	1	VA-0558-1XS	RING SEAL
286	1	W62-26-10	DOUBLE LIP SEAL
286	1	W85-315	RETAINER RING
287	2	K-2995-164	O'RING
287	2	L-0280-K	CHECK VALVE ASSEMBLY
287	2	Q-0921	ROLLER BEARING
287	1	QZ-0961	SEAL RETAINER
287	1	UA-0558	BEARING SPACER
287	1	VA-0558-1XS	RING SEAL
287	1	W62-26-10	DOUBLE LIP SEAL
287	1	W85-315	RETAINER RING
331	2	K-2995-164	O'RING
331	2	Q-0921	ROLLER BEARING
331	1	QZ-0961	SEAL RETAINER
331	1	S-0280	PLUG
331	1	VA-0558-1XS	RING SEAL
331	1	W58-48	BALL BEARING
331	1	W62-26-10	DOUBLE LIP SEAL
331	1	W85-315	RETAINER RING
367	2	K-2995-164	O'RING
367	2	Q-0921	ROLLER BEARING
367	1	QZ-0961	SEAL RETAINER
367	1	S-0280	PLUG
367	1	VA-0558-1XS	RING SEAL
367	1	W58-48	BALL BEARING
367	1	W62-26-10	DOUBLE LIP SEAL
367	1	W85-315	RETAINER RING

Shaft End cover Small Parts Codes

Code	QTY	Part Number	Description
379	2	K-2995-164	O'RING
379	2	Q-0921	ROLLER BEARING
379	1	QZ-0961	SEAL RETAINER
379	1	S-0280	PLUG
379	1	VA-0558-1XS	RING SEAL
379	1	W58-48	BALL BEARING
379	1	W62-26-10	DOUBLE LIP SEAL
379	1	W85-315	RETAINER RING
386	2	K-2995-164	O'RING
386	2	Q-0921	ROLLER BEARING
386	1	QZ-0961	SEAL RETAINER
386	1	S-0280	PLUG
386	1	VA-0558-1XS	RING SEAL
386	1	W58-48	BALL BEARING
386	1	W62-26-10	DOUBLE LIP SEAL
386	1	W85-315	RETAINER RING
387	2	K-2995-164	O'RING
387	2	Q-0921	ROLLER BEARING
387	1	QZ-0961	SEAL RETAINER
387	1	S-0280	PLUG
387	1	VA-0558-1XS	RING SEAL
387	1	W58-48	BALL BEARING
387	1	W62-26-10	DOUBLE LIP SEAL
387	1	W85-315	RETAINER RING
431	2	K-2995-164	O'RING
431	2	Q-0921	ROLLER BEARING
431	1	QZ-0961	SEAL RETAINER
431	1	S-0280	PLUG
431	1	VA-0558-1XS	RING SEAL
431	1	W58-48	BALL BEARING
431	1	W62-26-10	DOUBLE LIP SEAL
431	1	W85-315	RETAINER RING
467	2	K-2995-164	O'RING
467	2	Q-0921	ROLLER BEARING

Shaft End cover Small Parts Codes

Code	QTY	Part Number	Description
467	1	QZ-0961	SEAL RETAINER
467	1	S-0280	PLUG
467	1	VA-0558-1XS	RING SEAL
467	1	W58-48	BALL BEARING
467	1	W62-26-10	DOUBLE LIP SEAL
467	1	W85-315	RETAINER RING
479	2	K-2995-164	O'RING
479	2	Q-0921	ROLLER BEARING
479	1	QZ-0961	SEAL RETAINER
479	1	S-0280	PLUG
479	1	VA-0558-1XS	RING SEAL
479	1	W58-48	BALL BEARING
479	1	W62-26-10	DOUBLE LIP SEAL
479	1	W85-315	RETAINER RING
486	2	K-2995-164	O'RING
486	2	Q-0921	ROLLER BEARING
486	1	QZ-0961	SEAL RETAINER
486	1	S-0280	PLUG
486	1	VA-0558-1XS	RING SEAL
486	1	W58-48	BALL BEARING
486	1	W62-26-10	DOUBLE LIP SEAL
486	1	W85-315	RETAINER RING
487	2	K-2995-164	O'RING
487	2	Q-0921	ROLLER BEARING
487	1	QZ-0961	SEAL RETAINER
487	1	S-0280	PLUG
487	1	VA-0558-1XS	RING SEAL
487	1	W58-48	BALL BEARING
487	1	W62-26-10	DOUBLE LIP SEAL
487	1	W85-315	RETAINER RING
531	2	K-2995-164	O'RING
531	2	L-0280-K	CHECK VALVE ASSEMBLY
531	2	Q-0921	ROLLER BEARING
531	1	QZ-0961	SEAL RETAINER

Shaft End cover Small Parts Codes

Code	QTY	Part Number	Description
531	1	VA-0558-1XS	RING SEAL
531	1	W58-48	BALL BEARING
531	1	W62-26-10	DOUBLE LIP SEAL
531	1	W85-315	RETAINER RING
567	2	K-2995-164	O'RING
567	2	L-0280-K	CHECK VALVE ASSEMBLY
567	2	Q-0921	ROLLER BEARING
567	1	QZ-0961	SEAL RETAINER
567	1	VA-0558-1XS	RING SEAL
567	1	W58-48	BALL BEARING
567	1	W62-26-10	DOUBLE LIP SEAL
567	1	W85-315	RETAINER RING
579	2	K-2995-164	O'RING
579	2	L-0280-K	CHECK VALVE ASSEMBLY
579	2	Q-0921	ROLLER BEARING
579	1	QZ-0961	SEAL RETAINER
579	1	VA-0558-1XS	RING SEAL
579	1	W58-48	BALL BEARING
579	1	W62-26-10	DOUBLE LIP SEAL
579	1	W85-315	RETAINER RING
586	2	K-2995-164	O'RING
586	2	L-0280-K	CHECK VALVE ASSEMBLY
586	2	Q-0921	ROLLER BEARING
586	1	QZ-0961	SEAL RETAINER
586	1	VA-0558-1XS	RING SEAL
586	1	W58-48	BALL BEARING
586	1	W62-26-10	DOUBLE LIP SEAL
586	1	W85-315	RETAINER RING
587	2	K-2995-164	O'RING
587	2	L-0280-K	CHECK VALVE ASSEMBLY
587	2	Q-0921	ROLLER BEARING
587	1	QZ-0961	SEAL RETAINER
587	1	VA-0558-1XS	RING SEAL
587	1	W58-48	BALL BEARING

Shaft End cover Small Parts Codes

Code	QTY	Part Number	Description
587	1	W62-26-10	DOUBLE LIP SEAL
587	1	W85-315	RETAINER RING
731	2	K-2995-164	O'RING
731	2	L-0280-K	CHECK VALVE ASSEMBLY
731	2	Q-0921	ROLLER BEARING
731	1	QZ-0961	SEAL RETAINER
731	1	VA-0558-1XS	RING SEAL
731	1	W0-00	1/4" NPT PIPE PLUG
731	1	W58-48	BALL BEARING
731	1	W62-49-1	MOTOR SEAL
731	1	W85-315	RETAINER RING
767	2	K-2995-164	O'RING
767	2	L-0280-K	CHECK VALVE ASSEMBLY
767	2	Q-0921	ROLLER BEARING
767	1	QZ-0961	SEAL RETAINER
767	1	VA-0558-1XS	RING SEAL
767	1	W0-00	1/4" NPT PIPE PLUG
767	1	W58-48	BALL BEARING
767	1	W62-49-1	MOTOR SEAL
767	1	W85-315	RETAINER RING
779	2	K-2995-164	O'RING
779	2	L-0280-K	CHECK VALVE ASSEMBLY
779	2	Q-0921	ROLLER BEARING
779	1	QZ-0961	SEAL RETAINER
779	1	VA-0558-1XS	RING SEAL
779	1	W0-00	1/4" NPT PIPE PLUG
779	1	W58-48	BALL BEARING
779	1	W62-49-1	MOTOR SEAL
779	1	W85-315	RETAINER RING
786	2	K-2995-164	O'RING
786	2	L-0280-K	CHECK VALVE ASSEMBLY
786	2	Q-0921	ROLLER BEARING
786	1	QZ-0961	SEAL RETAINER
786	1	VA-0558-1XS	RING SEAL

Shaft End cover Small Parts Codes

Code	QTY	Part Number	Description
786	1	W0-00	1/4" NPT PIPE PLUG
786	1	W58-48	BALL BEARING
786	1	W62-49-1	MOTOR SEAL
786	1	W85-315	RETAINER RING
787	2	K-2995-164	O'RING
787	2	L-0280-K	CHECK VALVE ASSEMBLY
787	2	Q-0921	ROLLER BEARING
787	1	QZ-0961	SEAL RETAINER
787	1	VA-0558-1XS	RING SEAL
787	1	W0-00	1/4" NPT PIPE PLUG
787	1	W58-48	BALL BEARING
787	1	W62-49-1	MOTOR SEAL
787	1	W85-315	RETAINER RING
831	2	K-2995-164	O'RING
831	2	L-0280-K	CHECK VALVE ASSEMBLY
831	2	Q-0921	ROLLER BEARING
831	1	QZ-0961	SEAL RETAINER
831	1	UA-0558	BEARING SPACER
831	1	VA-0558-1XS	RING SEAL
831	1	W0-00	1/4" NPT PIPE PLUG
831	1	W62-49-1	MOTOR SEAL
831	1	W85-315	RETAINER RING
867	2	K-2995-164	O'RING
867	2	L-0280-K	CHECK VALVE ASSEMBLY
867	2	Q-0921	ROLLER BEARING
867	1	QZ-0961	SEAL RETAINER
867	1	UA-0558	BEARING SPACER
867	1	VA-0558-1XS	RING SEAL
867	1	W0-00	1/4" NPT PIPE PLUG
867	1	W62-49-1	MOTOR SEAL
867	1	W85-315	RETAINER RING
879	2	K-2995-164	O'RING
879	2	L-0280-K	CHECK VALVE ASSEMBLY
879	2	Q-0921	ROLLER BEARING

Shaft End cover Small Parts Codes

Code	QTY	Part Number	Description
879	1	QZ-0961	SEAL RETAINER
879	1	UA-0558	BEARING SPACER
879	1	VA-0558-1XS	RING SEAL
879	1	W0-00	1/4" NPT PIPE PLUG
879	1	W62-49-1	MOTOR SEAL
879	1	W85-315	RETAINER RING
886	2	K-2995-164	O'RING
886	2	L-0280-K	CHECK VALVE ASSEMBLY
886	2	Q-0921	ROLLER BEARING
886	1	QZ-0961	SEAL RETAINER
886	1	UA-0558	BEARING SPACER
886	1	VA-0558-1XS	RING SEAL
886	1	W0-00	1/4" NPT PIPE PLUG
886	1	W62-49-1	MOTOR SEAL
886	1	W85-315	RETAINER RING
887	2	K-2995-164	O'RING
887	2	L-0280-K	CHECK VALVE ASSEMBLY
887	2	Q-0921	ROLLER BEARING
887	1	QZ-0961	SEAL RETAINER
887	1	UA-0558	BEARING SPACER
887	1	VA-0558-1XS	RING SEAL
887	1	W0-00	1/4" NPT PIPE PLUG
887	1	W62-49-1	MOTOR SEAL
887	1	W85-315	RETAINER RING
ALL	2	Q-0921	ROLLER BEARING
ALL	4	Q-0921	ROLLER BEARING
ALL	1	VA-0558-1XS	RING SEAL
ALL	2	VA-0558-1XS	RING SEAL
B	4	Q-0921	ROLLER BEARING
B	2	VA-0558-1XS	RING SEAL
B	1	W0-17	1/4" NPT PIPE PLUG
C	4	Q-0921	ROLLER BEARING
C	2	VA-0558-1XS	RING SEAL
C	1	W0-17	1/4" NPT PIPE PLUG

Shaft End cover Small Parts Codes

Code	QTY	Part Number	Description
GZ	1	Q-0921	ROLLER BEARING
JN	2	Q-0921	ROLLER BEARING
JN	1	S-0280	PLUG
JN	1	VA-0558-1XS	RING SEAL
JN	1	W62-26-17	DOUBLE LIP SEAL
KN	2	Q-0921	ROLLER BEARING
KN	1	S-0280	PLUG
KN	1	VA-0558-1XS	RING SEAL
KN	1	W62-26-17	DOUBLE LIP SEAL
LN	2	L-0280-K	CHECK VALVE
LN	2	Q-0921	ROLLER BEARING
LN	1	VA-0558-1XS	RING SEAL
LN	1	W62-26-17	DOUBLE LIP SEAL
UZ	1	Q-0921	ROLLER BEARING
ZD	1	Q-0921	ROLLER BEARING
ZG	1	Q-0921	ROLLER BEARING
ZU	1	Q-0921	ROLLER BEARING

ALL DRY VALVE PUMPS REQUIRE DRY VALVE RING SEALS

QTY	Part Number	Description
1	VA-0558-DV	DRY VALVE RING SEAL
1	W62-49-1	MOTOR SEAL (INTEGRAL SHAFT)
1	W62-26-10	PUMP SEAL (CONTINENTAL SHAFT)

Dry valve Parts

QTY	Part Number	Description
2	VA-0558-DV	DRY VALVE RING SEAL
1	W62-49-1	HIGH PRESSURE SEAL (INTEGRAL GEAR)
1	W62-26-10	SHAFT SEAL (CONTINENTAL GEAR)
2	AZ-0947-DVS	DRY VALVE THRUST PLATES
4	280-1774-939	DRY VALVE THRUST PLATES SEALS

Code QTY Part Number Description

AD	1	XZ-0592D	Both Bi-Rotation with BLANK Blank Inlet and Blank Outlet, Single
AH	1	XZ-0592D	Both Bi-Rotation with BLANK Blank Inlet and Blank Outlet, Multiple
AX	1	XZ-0592D	Both Bi-Rotation with BLANK Blank Inlet and Blank Outlet, Extended Studs
KN	1	RB-0574-24D	Both Bi-Rotation with BLANK Blank Inlet and Blank Outlet, Single
ZG	1	XZ-0592-26D	Pump CCW with BLANK Blank Inlet and Blank Outlet, Single
ZU	1	XZ-0592-64D	Pump CCW with BLANK Blank Inlet and Blank Outlet, Single
GZ	1	XZ-0592-26D	Pump CW with BLANK Blank Inlet and Blank Outlet, Single
UZ	1	XZ-0592-64D	Pump CW with BLANK Blank Inlet and Blank Outlet, Single
ZD	1	592-01156	Pump CW with BLANK Blank Inlet and Blank Outlet, Single

Code QTY Part Number Description

ID	1	XZ-0592-64D	Both Bi-Rotation with ORB 1" Rear Port inlet and 1" Rear Port outlet, Single
IH	1	XZ-0592-64D	Both Bi-Rotation with ORB 1" Rear Port inlet and 1" Rear Port outlet, Multiple
IX	1	XZ-0592-64D	Both Bi-Rotation with ORB 1" Rear Port inlet and 1" Rear Port outlet, Extended Studs
BD	1	XZ-0592-57D	Both CCW with ORB Blank Inlet and 0.75" Rear Port On The Left outlet, Single
BH	1	XZ-0592-57D	Both CCW with ORB Blank Inlet and 0.75" Rear Port On The Left outlet, Multiple
BX	1	XZ-0592-57D	Both CCW with ORB Blank Inlet and 0.75" Rear Port On The Left outlet, Extended Studs
CD	1	XZ-0592-79D	Both CW with ORB 0.75" Rear Port On The Right inlet and Blank Outlet, Single
CH	1	XZ-0592-79D	Both CW with ORB 0.75" Rear Port On The Right inlet and Blank Outlet, Multiple
CX	1	XZ-0592-79D	Both CW with ORB 0.75" Rear Port On The Right inlet and Blank Outlet, Extended Studs
DZ	1	592-01156	Pump CW with ORB Blank Inlet and Blank Outlet, Single

Port End cover Small Parts Codes

Code	QTY	Part Number	Description
LN	1	K-2995-159	O'RING
JN	1	K-2995-159	O'RING
KN	1	K-2995-159	O'RING
JN	2	W1-24	CAP SCREW
LN	2	W1-24	CAP SCREW
KN	2	W1-24	CAP SCREW
JN	2	W2-4	LOCK WASHER
KN	2	W2-4	LOCK WASHER
LN	2	W2-4	LOCK WASHER

PiggyBack Port End cover Codes

Code QTY Part Number Description

LN	1	CB-0574-24D	3000/3000, 3000/5000 BIRO
LN	1	IB-0574-24	PB 5000/3000, 5000/5000 BIRO
LN	1	RB-0574-24	PB 7500/5000 - 7500/3000 BIRO
KN	1	CB-0574-24D	3000/3000, 3000/5000 CCW
KN	1	IB-0574-24	PB 5000/3000, 5000/5000 CCW
KN	1	RB-0574-24	PB 7500/5000 - 7500/3000 CCW
JN	1	CB-0574-24D	3000/3000, 3000/5000 CW
JN	1	IB-0574-24	PB 5000/3000, 5000/5000 CW
JN	1	RB-0574-24	PB 7500/5000 - 7500/3000 CW

Code	QTY	Part Number	Description
ZA05	1	RZ-0577-05D	Bi-Rotation, 0.5" gear width BLANK ports: BLANK on the left and BLANK on the right, 1.5" wide gear housing
ZA07	1	RZ-0577-07D	Bi-Rotation, 0.75" gear width BLANK ports: BLANK on the left and BLANK on the right, 1.75" wide gear housing
ZA10	1	RZ-0577-10D	Bi-Rotation, 1" gear width BLANK ports: BLANK on the left and BLANK on the right, 2" wide gear housing
ZA12	1	RZ-0577-12D	Bi-Rotation, 1.25" gear width BLANK ports: BLANK on the left and BLANK on the right, 2.25" wide gear housing
ZA15	1	RZ-0577-15D	Bi-Rotation, 1.5" gear width BLANK ports: BLANK on the left and BLANK on the right, 2.5" wide gear housing
ZA17	1	RZ-0577-17D	Bi-Rotation, 1.75" gear width BLANK ports: BLANK on the left and BLANK on the right, 2.5" wide gear housing
ZA20	1	RZ-0577-20D	Bi-Rotation, 2" gear width BLANK ports: BLANK on the left and BLANK on the right, 3" wide gear housing
ZA22	1	RZ-0577-22D	Bi-Rotation, 2.25" gear width BLANK ports: BLANK on the left and BLANK on the right, 3.25" wide gear housing
ZA25	1	RZ-0577-25D	Bi-Rotation, 2.5" gear width BLANK ports: BLANK on the left and BLANK on the right, 3.5" wide gear housing
ZA27	1	RZ-0577-27D	Bi-Rotation, 2.75" gear width BLANK ports: BLANK on the left and BLANK on the right, 3.75" wide gear housing
ZA30	1	RZ-0577-30D	Bi-Rotation, 3.00" gear width BLANK ports: BLANK on the left and BLANK on the right, 4.0" wide gear housing

Gear Housing Codes

NPT

Code QTY Part Number Description

HB07	1	RZ-0577-07-1D	CCW, 0.75" gear width NPT ports: 0.75" on the left and BLANK on the right, 1.75" wide gear housing
HC07	1	RZ-0577-07-1D	CW, 0.75" gear width NPT ports: BLANK on the left and 0.75" on the right, 1.75" wide gear housing
HC10	1	RZ-0577-10-1D	CW, 1" gear width NPT ports: BLANK on the left and 0.75" on the right, 2" wide gear housing
HF10	1	RZ-0577-10-3D	CCW, 1" gear width NPT ports: 0.75" on the left and 1" on the right, 2" wide gear housing
HI10	1	RZ-0577-10-3D	CW, 1" gear width NPT ports: 1" on the left and 0.75" on the right, 2" wide gear housing
XE10	1	RZ-0577-10-5D	Bi-Rotation, 1" gear width NPT ports: 1" on the left and 1" on the right, 2" wide gear housing
HB10	1	RZ-0577-10-1D	CCW, 1" gear width NPT ports: 0.75" on the left and BLANK on the right, 2" wide gear housing
HB12	1	RZ-0577-12-1D	CCW, 1.25" gear width NPT ports: 0.75" on the left and BLANK on the right, 2.25" wide gear housing
XF12	1	RZ-0577-12-6D	CCW, 1.25" gear width NPT ports: 1" on the left and 1.25" on the right, 2.25" wide gear housing
XB12	1	RZ-0577-12-4D	CCW, 1.25" gear width NPT ports: 1" on the left and BLANK on the right, 2.25" wide gear housing
XC12	1	RZ-0577-12-4D	CW, 1.25" gear width NPT ports: BLANK on the left and 1" on the right, 2.25" wide gear housing
HI12	1	RZ-0577-12-3D	CW, 1.25" gear width NPT ports: 1" on the left and 0.75" on the right, 2.25" wide gear housing
HF12	1	RZ-0577-12-3D	CCW, 1.25" gear width NPT ports: 0.75" on the left and 1" on the right, 2.25" wide gear housing
HC12	1	RZ-0577-12-1D	CW, 1.25" gear width NPT ports: BLANK on the left and 0.75" on the right, 2.25" wide gear housing
XI12	1	RZ-0577-12-6D	CW, 1.25" gear width NPT ports: 1.25" on the left and 1" on the right, 2.25" wide gear housing
XK12	1	RZ-0577-12-8D	Bi-Rotation, 1.25" gear width NPT ports: 1.25" on the left and 1.25" on the right, 2.25" wide gear housing
XK15	1	RZ-0577-15-8D	Bi-Rotation, 1.5" gear width NPT ports: 1.25" on the left and 1.25" on the right, 2.5" wide gear housing
XI15	1	RZ-0577-15-6D	CW, 1.5" gear width NPT ports: 1.25" on the left and 1" on the right, 2.5" wide gear housing
HC15	1	RZ-0577-15-1D	CW, 1.5" gear width NPT ports: BLANK on the left and 0.75" on the right, 2.5" wide gear housing
HF15	1	RZ-0577-15-3D	CCW, 1.5" gear width NPT ports: 0.75" on the left and 1" on the right, 2.5" wide gear housing
HI15	1	RZ-0577-15-3D	CW, 1.5" gear width NPT ports: 1" on the left and 0.75" on the right, 2.5" wide gear housing
XC15	1	RZ-0577-15-4D	CW, 1.5" gear width NPT ports: BLANK on the left and 1" on the right, 2.5" wide gear housing

Gear Housing Codes

NPT

Code QTY Part Number Description

XB15	1	RZ-0577-15-4D	CCW, 1.5" gear width NPT ports: 1" on the left and BLANK on the right, 2.5" wide gear housing
XF15	1	RZ-0577-15-6D	CCW, 1.5" gear width NPT ports: 1" on the left and 1.25" on the right, 2.5" wide gear housing
HB15	1	RZ-0577-15-1D	CCW, 1.5" gear width NPT ports: 0.75" on the left and BLANK on the right, 2.5" wide gear housing
XK17	1	RZ-0577-17-8D	Bi-Rotation, 1.75" gear width NPT ports: 1.25" on the left and 1.25" on the right, 2.75" wide gear housing
XI20	1	RZ-0577-20-6D	CW, 2" gear width NPT ports: 1.25" on the left and 1" on the right, 3" wide gear housing
XF20	1	RZ-0577-20-6D	CCW, 2" gear width NPT ports: 1" on the left and 1.25" on the right, 3" wide gear housing

Gear Housing Codes

ORB

Code QTY Part Number Description

DB07	1	RZ-0577-07-57D	CCW, 0.75" gear width ORB ports: 0.75" on the left and BLANK on the right, 1.75" wide gear housing
DC07	1	RZ-0577-07-57D	CW, 0.75" gear width ORB ports: BLANK on the left and 0.75" on the right, 1.75" wide gear housing
DF07	1	RZ-0577-07-71D	CCW, 0.75" gear width ORB ports: 0.75" on the left and 1" on the right, 1.75" wide gear housing
DI07	1	RZ-0577-07-71D	CW, 0.75" gear width ORB ports: 1" on the left and 0.75" on the right, 1.75" wide gear housing
ZE07	1	RZ-0577-07-64D	Bi-Rotation, 0.75" gear width ORB ports: 1" on the left and 1" on the right, 1.75" wide gear housing
ZE10	1	RZ-0577-10-64D	Bi-Rotation, 1" gear width ORB ports: 1" on the left and 1" on the right, 2" wide gear housing
ZI10	1	RZ-0577-10-65D	CW, 1" gear width ORB ports: 1.25" on the left and 1" on the right, 2" wide gear housing
ZF10	1	RZ-0577-10-65D	CCW, 1" gear width ORB ports: 1" on the left and 1.25" on the right, 2" wide gear housing
DI10	1	RZ-0577-10-71D	CW, 1" gear width ORB ports: 1" on the left and 0.75" on the right, 2" wide gear housing
DF10	1	RZ-0577-10-71D	CCW, 1" gear width ORB ports: 0.75" on the left and 1" on the right, 2" wide gear housing
DC10	1	RZ-0577-10-57D	CW, 1" gear width ORB ports: BLANK on the left and 0.75" on the right, 2" wide gear housing
DB10	1	RZ-0577-10-57D	CCW, 1" gear width ORB ports: 0.75" on the left and BLANK on the right, 2" wide gear housing
DJ10	1	RZ-0577-10-73D	CW, 1" gear width ORB ports: 1.25" on the left and 0.75" on the right, 2" wide gear housing
DG10	1	RZ-0577-10-73D	CCW, 1" gear width ORB ports: 0.75" on the left and 1.25" on the right, 2" wide gear housing
ZC12	1	RZ-0577-12-63D	CW, 1.25" gear width ORB ports: BLANK on the left and 1" on the right, 2.25" wide gear housing
ZB12	1	RZ-0577-12-63D	CCW, 1.25" gear width ORB ports: 1" on the left and BLANK on the right, 2.25" wide gear housing
DB12	1	RZ-0577-12-57D	CCW, 1.25" gear width ORB ports: 0.75" on the left and BLANK on the right, 2.25" wide gear housing
DC12	1	RZ-0577-12-57D	CW, 1.25" gear width ORB ports: BLANK on the left and 0.75" on the right, 2.25" wide gear housing
DF12	1	RZ-0577-12-71D	CCW, 1.25" gear width ORB ports: 0.75" on the left and 1" on the right, 2.25" wide gear housing
DI12	1	RZ-0577-12-71D	CW, 1.25" gear width ORB ports: 1" on the left and 0.75" on the right, 2.25" wide gear housing
ZF12	1	RZ-0577-12-65D	CCW, 1.25" gear width ORB ports: 1" on the left and 1.25" on the right, 2.25" wide gear housing
ZI12	1	RZ-0577-12-65D	CW, 1.25" gear width ORB ports: 1.25" on the left and 1" on the right, 2.25" wide gear housing
ZE12	1	RZ-0577-12-64D	Bi-Rotation, 1.25" gear width ORB ports: 1" on the left and 1" on the right, 2.25" wide gear housing

Gear Housing Codes

ORB

Code	QTY	Part Number	Description
ZE15	1	RZ-0577-15-64D	Bi-Rotation, 1.5" gear width ORB ports: 1" on the left and 1" on the right, 2.5" wide gear housing
ZI15	1	RZ-0577-15-65D	CW, 1.5" gear width ORB ports: 1.25" on the left and 1" on the right, 2.5" wide gear housing
ZJ15	1	RZ-0577-15-74D	CW, 1.5" gear width ORB ports: 1.5" on the left and 1" on the right, 2.5" wide gear housing
ZK15	1	RZ-0577-15-67D	Bi-Rotation, 1.5" gear width ORB ports: 1.25" on the left and 1.25" on the right, 2.5" wide gear housing
ZF15	1	RZ-0577-15-65D	CCW, 1.5" gear width ORB ports: 1" on the left and 1.25" on the right, 2.5" wide gear housing
ZG15	1	RZ-0577-15-74D	CCW, 1.5" gear width ORB ports: 1" on the left and 1.5" on the right, 2.5" wide gear housing
ZC15	1	RZ-0577-15-63D	CW, 1.5" gear width ORB ports: BLANK on the left and 1" on the right, 2.5" wide gear housing
ZL15	1	RZ-0577-15-68D	CCW, 1.5" gear width ORB ports: 1.25" on the left and 1.5" on the right, 2.5" wide gear housing
ZO15	1	RZ-0577-15-68D	CW, 1.5" gear width ORB ports: 1.5" on the left and 1.25" on the right, 2.5" wide gear housing
DI15	1	RZ-0577-15-71D	CW, 1.5" gear width ORB ports: 1" on the left and 0.75" on the right, 2.5" wide gear housing
DF15	1	RZ-0577-15-71D	CCW, 1.5" gear width ORB ports: 0.75" on the left and 1" on the right, 2.5" wide gear housing
DC15	1	RZ-0577-15-57D	CW, 1.5" gear width ORB ports: BLANK on the left and 0.75" on the right, 2.5" wide gear housing
DB15	1	RZ-0577-15-57D	CCW, 1.5" gear width ORB ports: 0.75" on the left and BLANK on the right, 2.5" wide gear housing
ZB15	1	RZ-0577-15-63D	CCW, 1.5" gear width ORB ports: 1" on the left and BLANK on the right, 2.5" wide gear housing
ZO17	1	RZ-0577-17-68D	CW, 1.75" gear width ORB ports: 1.5" on the left and 1.25" on the right, 2.75" wide gear housing
ZQ17	1	RZ-0577-17-70D	Bi-Rotation, 1.75" gear width ORB ports: 1.5" on the left and 1.5" on the right, 2.75" wide gear housing
ZL17	1	RZ-0577-17-68D	CCW, 1.75" gear width ORB ports: 1.25" on the left and 1.5" on the right, 2.75" wide gear housing
ZK17	1	RZ-0577-17-67D	Bi-Rotation, 1.75" gear width ORB ports: 1.25" on the left and 1.25" on the right, 2.75" wide gear housing
ZE17	1	RZ-0577-17-64D	Bi-Rotation, 1.75" gear width ORB ports: 1" on the left and 1" on the right, 2.75" wide gear housing
ZE20	1	RZ-0577-20-64D	Bi-Rotation, 2" gear width ORB ports: 1" on the left and 1" on the right, 3" wide gear housing
ZK20	1	RZ-0577-20-67D	Bi-Rotation, 2" gear width ORB ports: 1.25" on the left and 1.25" on the right, 3" wide gear housing
ZQ20	1	RZ-0577-20-70D	Bi-Rotation, 2" gear width ORB ports: 1.5" on the left and 1.5" on the right, 3" wide gear housing

Gear Housing Codes

ORB

Code	QTY	Part Number	Description
ZK22	1	RZ-0577-22-67D	Bi-Rotation, 2.25" gear width ORB ports: 1.25" on the left and 1.25" on the right, 3.25" wide gear housing
ZQ22	1	RZ-0577-22-70D	Bi-Rotation, 2.25" gear width ORB ports: 1.5" on the left and 1.5" on the right, 3.25" wide gear housing
ZK25	1	RZ-0577-25-67D	Bi-Rotation, 2.5" gear width ORB ports: 1.25" on the left and 1.25" on the right, 3.5" wide gear housing
ZK27	1	RZ-0577-27-67D	Bi-Rotation, 2.75" gear width ORB ports: 1.25" on the left and 1.25" on the right, 3.75" wide gear housing
ZK30	1	RZ-0577-30-67D	Bi-Rotation, 3.00" gear width ORB ports: 1.25" on the left and 1.25" on the right, 4.0" wide gear housing
ZZ30	1	RZ-0577-30-22D	Bi-Rotation, 3.00" gear width ORB ports: 2" on the left and 2" on the right, 4.0" wide gear housing

Gear Housing Codes

SF

Code	QTY	Part Number	Description
TI07	1	RZ-0577-07-31D	CW, 0.75" gear width SF ports: 1" on the left and 0.75" on the right, 1.75" wide gear housing
TB07	1	RZ-0577-07-29D	CCW, 0.75" gear width SF ports: 0.75" on the left and BLANK on the right, 1.75" wide gear housing
TC07	1	RZ-0577-07-29D	CW, 0.75" gear width SF ports: BLANK on the left and 0.75" on the right, 1.75" wide gear housing
TF07	1	RZ-0577-07-31D	CCW, 0.75" gear width SF ports: 0.75" on the left and 1" on the right, 1.75" wide gear housing
TF10	1	RZ-0577-10-31D	CCW, 1" gear width SF ports: 0.75" on the left and 1" on the right, 2" wide gear housing
TC10	1	RZ-0577-10-29D	CW, 1" gear width SF ports: BLANK on the left and 0.75" on the right, 2" wide gear housing
TB10	1	RZ-0577-10-29D	CCW, 1" gear width SF ports: 0.75" on the left and BLANK on the right, 2" wide gear housing
TI10	1	RZ-0577-10-31D	CW, 1" gear width SF ports: 1" on the left and 0.75" on the right, 2" wide gear housing
NB10	1	RZ-0577-10-32D	CCW, 1" gear width SF ports: 1" on the left and BLANK on the right, 2" wide gear housing
NC10	1	RZ-0577-10-32D	CW, 1" gear width SF ports: BLANK on the left and 1" on the right, 2" wide gear housing
NE10	1	RZ-0577-10-33D	Bi-Rotation, 1" gear width SF ports: 1" on the left and 1" on the right, 2" wide gear housing
NF10	1	RZ-0577-10-34D	CCW, 1" gear width SF ports: 1" on the left and 1.25" on the right, 2" wide gear housing
NI10	1	RZ-0577-10-34D	CW, 1" gear width SF ports: 1.25" on the left and 1" on the right, 2" wide gear housing
NK10	1	RZ-0577-10-36D	Bi-Rotation, 1" gear width SF ports: 1.25" on the left and 1.25" on the right, 2" wide gear housing
NK12	1	RZ-0577-12-36D	Bi-Rotation, 1.25" gear width SF ports: 1.25" on the left and 1.25" on the right, 2.25" wide gear housing
NL12	1	RZ-0577-12-38D	CCW, 1.25" gear width SF ports: 1.25" on the left and 1.5" on the right, 2.25" wide gear housing
NO12	1	RZ-0577-12-38D	CW, 1.25" gear width SF ports: 1.5" on the left and 1.25" on the right, 2.25" wide gear housing
NZ12	1	RZ-0577-12-35D	CCW, 1.25" gear width SF ports: 1.25" on the left and BLANK on the right, 2.25" wide gear housing
NI12	1	RZ-0577-12-34D	CW, 1.25" gear width SF ports: 1.25" on the left and 1" on the right, 2.25" wide gear housing
NG12	1	RZ-0577-12-44D	CCW, 1.25" gear width SF ports: 1" on the left and 1.5" on the right, 2.25" wide gear housing
NJ12	1	RZ-0577-12-44D	CW, 1.25" gear width SF ports: 1.5" on the left and 1" on the right, 2.25" wide gear housing
NF12	1	RZ-0577-12-34D	CCW, 1.25" gear width SF ports: 1" on the left and 1.25" on the right, 2.25" wide gear housing
NE12	1	RZ-0577-12-33D	Bi-Rotation, 1.25" gear width SF ports: 1" on the left and 1" on the right, 2.25" wide gear housing

Gear Housing Codes

SF

Code QTY Part Number Description

NC12	1	RZ-0577-12-32D	CW, 1.25" gear width SF ports: BLANK on the left and 1" on the right, 2.25" wide gear housing
NB12	1	RZ-0577-12-32D	CCW, 1.25" gear width SF ports: 1" on the left and BLANK on the right, 2.25" wide gear housing
NA12	1	RZ-0577-12-35D	CCW, 1.25" gear width SF ports: BLANK on the left and 1.25" on the right, 2.25" wide gear housing
TI12	1	RZ-0577-12-31D	CW, 1.25" gear width SF ports: 1" on the left and 0.75" on the right, 2.25" wide gear housing
TB12	1	RZ-0577-12-29D	CCW, 1.25" gear width SF ports: 0.75" on the left and BLANK on the right, 2.25" wide gear housing
TC12	1	RZ-0577-12-29D	CW, 1.25" gear width SF ports: BLANK on the left and 0.75" on the right, 2.25" wide gear housing
TF12	1	RZ-0577-12-31D	CCW, 1.25" gear width SF ports: 0.75" on the left and 1" on the right, 2.25" wide gear housing
FD12	1	577-01569-12	CW, 1.25" gear for SF ports: 1.5" on the left and BLANK on the right, 2.25" wide gear housing, Flow Control Unloader
FT12	1	577-01569-12	CCW, 1.25" gear for SF ports: 1.5" on the left and BLANK on the right, 2.25" wide gear housing, Flow Control Unloader
FT15	1	577-01569-15	CCW, 1.5" gear for SF ports: 1.5" on the left and BLANK on the right, 2.5" wide gear housing, Flow Control Unloader
ML15	1	RZ-0577-15-38DMC	CCW, 1.5" gear for SF ports: 1.25" on the left and 1.5" on the right, 2.5" wide gear housing, WITH MUNCIE COUNTER-BORE
FD15	1	577-01569-15	CW, 1.5" gear for SF ports: 1.5" on the left and BLANK on the right, 2.5" wide gear housing, Flow Control Unloader
TF15	1	RZ-0577-15-31D	CCW, 1.5" gear width SF ports: 0.75" on the left and 1" on the right, 2.5" wide gear housing
TC15	1	RZ-0577-15-6D	CW, 1.5" gear width SF ports: BLANK on the left and 0.75" on the right, 2.5" wide gear housing
TB15	1	RZ-0577-15-29D	CCW, 1.5" gear width SF ports: 0.75" on the left and BLANK on the right, 2.5" wide gear housing
TI15	1	RZ-0577-15-31D	CW, 1.5" gear width SF ports: 1" on the left and 0.75" on the right, 2.5" wide gear housing
NA15	1	RZ-0577-15-35D	CW, 1.5" gear width SF ports: BLANK on the left and 1.25" on the right, 2.5" wide gear housing
NB15	1	RZ-0577-15-32D	CCW, 1.5" gear width SF ports: 1" on the left and BLANK on the right, 2.5" wide gear housing
NC15	1	RZ-0577-15-32D	CW, 1.5" gear width SF ports: BLANK on the left and 1" on the right, 2.5" wide gear housing
NE15	1	RZ-0577-15-33D	Bi-Rotation, 1.5" gear width SF ports: 1" on the left and 1" on the right, 2.5" wide gear housing
NF15	1	RZ-0577-15-34D	CCW, 1.5" gear width SF ports: 1" on the left and 1.25" on the right, 2.5" wide gear housing
NJ15	1	RZ-0577-15-44D	Bi-Rotation, 1.5" gear width SF ports: 1.5" on the left and 1" on the right, 2.5" wide gear housing

Gear Housing Codes

SF

Code QTY Part Number Description

NG15	1	RZ-0577-15-44D	CCW, 1.5" gear width SF ports: 1" on the left and 1.5" on the right, 2.5" wide gear housing
NI15	1	RZ-0577-15-34D	CW, 1.5" gear width SF ports: 1.25" on the left and 1" on the right, 2.5" wide gear housing
NZ15	1	RZ-0577-15-35D	CCW, 1.5" gear width SF ports: 1.25" on the left and BLANK on the right, 2.5" wide gear housing
NQ15	1	RZ-0577-15-40D	Bi-Rotation, 1.5" gear width SF ports: 1.5" on the left and 1.5" on the right, 2.5" wide gear housing
NR15	1	RZ-0577-15-41D	CCW, 1.5" gear width SF ports: 1.5" on the left and 2" on the right, 2.5" wide gear housing
NU15	1	RZ-0577-15-41D	CW, 1.5" gear width SF ports: 2" on the left and 1.5" on the right, 2.5" wide gear housing
NO15	1	RZ-0577-15-38D	CW, 1.5" gear width SF ports: 1.5" on the left and 1.25" on the right, 2.5" wide gear housing
NL15	1	RZ-0577-15-38D	CCW, 1.5" gear width SF ports: 1.25" on the left and 1.5" on the right, 2.5" wide gear housing
NK15	1	RZ-0577-15-36D	Bi-Rotation, 1.5" gear width SF ports: 1.25" on the left and 1.25" on the right, 2.5" wide gear housing
NK17	1	RZ-0577-17-36D	Bi-Rotation, 1.75" gear width SF ports: 1.25" on the left and 1.25" on the right, 2.75" wide gear housing
NL17	1	RZ-0577-17-38D	CCW, 1.75" gear width SF ports: 1.25" on the left and 1.5" on the right, 2.75" wide gear housing
NO17	1	RZ-0577-17-38D	CW, 1.75" gear width SF ports: 1.5" on the left and 1.25" on the right, 2.75" wide gear housing
NM17	1	RZ-0577-17-45D	CCW, 1.75" gear width SF ports: 1.25" on the left and 2" on the right, 2.75" wide gear housing
NP17	1	RZ-0577-17-45D	CW, 1.75" gear width SF ports: 2" on the left and 1.25" on the right, 2.75" wide gear housing
NU17	1	RZ-0577-17-41D	CW, 1.75" gear width SF ports: 2" on the left and 1.5" on the right, 2.75" wide gear housing
NT17	1	RZ-0577-17-39D	CW, 1.75" gear width SF ports: BLANK on the left and 1.5" on the right, 2.75" wide gear housing
NR17	1	RZ-0577-17-41D	CCW, 1.75" gear width SF ports: 1.5" on the left and 2" on the right, 2.75" wide gear housing
NQ17	1	RZ-0577-17-40D	Bi-Rotation, 1.75" gear width SF ports: 1.5" on the left and 1.5" on the right, 2.75" wide gear housing
NZ17	1	RZ-0577-17-35D	CCW, 1.75" gear width SF ports: 1.25" on the left and BLANK on the right, 2.75" wide gear housing
TA17	1	RZ-0577-17-42D	CCW, 1.75" gear width SF ports: 1" on the left and 2" on the right, 2.75" wide gear housing
NI17	1	RZ-0577-17-34D	CW, 1.75" gear width SF ports: 1.25" on the left and 1" on the right, 2.75" wide gear housing
NG17	1	RZ-0577-17-44D	CCW, 1.75" gear width SF ports: 1" on the left and 1.5" on the right, 2.75" wide gear housing
NJ17	1	RZ-0577-17-44D	CW, 1.75" gear width SF ports: 1.5" on the left and 1" on the right, 2.75" wide gear housing

Gear Housing Codes

SF

Code	QTY	Part Number	Description
NF17	1	RZ-0577-17-34D	CCW, 1.75" gear width SF ports: 1" on the left and 1.25" on the right, 2.75" wide gear housing
ND17	1	RZ-0577-17-39D	CCW, 1.75" gear width SF ports: 1.5" on the left and BLANK on the right, 2.75" wide gear housing
NE17	1	RZ-0577-17-33D	Bi-Rotation, 1.75" gear width SF ports: 1" on the left and 1" on the right, 2.75" wide gear housing
NC17	1	RZ-0577-17-32D	CW, 1.75" gear width SF ports: BLANK on the left and 1" on the right, 2.75" wide gear housing
NB17	1	RZ-0577-17-32D	CCW, 1.75" gear width SF ports: 1" on the left and BLANK on the right, 2.75" wide gear housing
NA17	1	RZ-0577-17-35D	CW, 1.75" gear width SF ports: BLANK on the left and 1.25" on the right, 2.75" wide gear housing
TI17	1	RZ-0577-17-31D	CW, 1.75" gear width SF ports: 1" on the left and 0.75" on the right, 2.75" wide gear housing
TH17	1	RZ-0577-17-2D	CCW, 1.75" gear width SF ports: 2" on the left and BLANK on the right, 2.75" wide gear housing
TP17	1	RZ-0577-17-42D	CW, 1.75" gear width SF ports: 2" on the left and 1" on the right, 2.75" wide gear housing
TF17	1	RZ-0577-17-31D	CCW, 1.75" gear width SF ports: 0.75" on the left and 1" on the right, 2.75" wide gear housing
TG17	1	RZ-0577-17-2D	CW, 1.75" gear width SF ports: BLANK on the left and 2" on the right, 2.75" wide gear housing
FG17	1	577-01569-17	CCW, 1.75" gear for SF ports: 2" on the left and BLANK on the right, 2.75" wide gear housing, Flow Control Unloader
ML17	1	RZ-0577-17-38DMC	CCW, 1.75" gear for SF ports: 1.25" on the left and 1.5" on the right, 2.75" wide gear housing, WITH MUNCIE COUNTER-BORE
FH17	1	577-01569-17	CW, 1.75" gear for SF ports: 1.5" on the left and BLANK on the right, 2.75" wide gear housing, Flow Control Unloader
FH20	1	577-01569-20	CW, 2" gear for SF ports: 2" on the left and BLANK on the right, 3" wide gear housing, Flow Control Unloader
MM20	1	RZ-0577-20-45DMC	CCW, 2" gear for SF ports: 1.25" on the left and 2" on the right, 3" wide gear housing, WITH MUNCIE COUNTER-BORE
FG20	1	577-01569-20	CCW, 2" gear for SF ports: 2" on the left and BLANK on the right, 3" wide gear housing, Flow Control Unloader
TG20	1	RZ-0577-20-2D	CW, 2" gear width SF ports: BLANK on the left and 2" on the right, 3" wide gear housing
TF20	1	RZ-0577-20-31D	CCW, 2" gear width SF ports: 0.75" on the left and 1" on the right, 3" wide gear housing
TP20	1	RZ-0577-20-42D	CW, 2" gear width SF ports: 2" on the left and 1" on the right, 3" wide gear housing
TH20	1	RZ-0577-20-2D	CCW, 2" gear width SF ports: 2" on the left and BLANK on the right, 3" wide gear housing
TI20	1	RZ-0577-20-31D	CW, 2" gear width SF ports: 1" on the left and 0.75" on the right, 3" wide gear housing
NA20	1	RZ-0577-20-35D	CW, 2" gear width SF ports: BLANK on the left and 1.25" on the right, 3" wide gear housing
NB20	1	RZ-0577-20-32D	CCW, 2" gear width SF ports: 1" on the left and BLANK on the right, 3" wide gear housing

Gear Housing Codes

SF

Code	QTY	Part Number	Description
NC20	1	RZ-0577-20-32D	CW, 2" gear width SF ports: BLANK on the left and 1" on the right, 3" wide gear housing
NE20	1	RZ-0577-20-33D	Bi-Rotation, 2" gear width SF ports: 1" on the left and 1" on the right, 3" wide gear housing
ND20	1	RZ-0577-20-39D	CCW, 2" gear width SF ports: 1.5" on the left and BLANK on the right, 3" wide gear housing
NF20	1	RZ-0577-20-34D	CCW, 2" gear width SF ports: 1" on the left and 1.25" on the right, 3" wide gear housing
NI20	1	RZ-0577-20-34D	CW, 2" gear width SF ports: 1.25" on the left and 1" on the right, 3" wide gear housing
TA20	1	RZ-0577-20-42D	CCW, 2" gear width SF ports: 1" on the left and 2" on the right, 3" wide gear housing
NZ20	1	RZ-0577-20-35D	CCW, 2" gear width SF ports: 1.25" on the left and BLANK on the right, 3" wide gear housing
NQ20	1	RZ-0577-20-40D	Bi-Rotation, 2" gear width SF ports: 1.5" on the left and 1.5" on the right, 3" wide gear housing
NR20	1	RZ-0577-20-41D	CCW, 2" gear width SF ports: 1.5" on the left and 2" on the right, 3" wide gear housing
NT20	1	RZ-0577-20-39D	CW, 2" gear width SF ports: BLANK on the left and 1.5" on the right, 3" wide gear housing
NU20	1	RZ-0577-20-41D	CW, 2" gear width SF ports: 2" on the left and 1.5" on the right, 3" wide gear housing
NP20	1	RZ-0577-20-45D	CW, 2" gear width SF ports: 2" on the left and 1.25" on the right, 3" wide gear housing
NM20	1	RZ-0577-20-45D	CCW, 2" gear width SF ports: 1.25" on the left and 2" on the right, 3" wide gear housing
NO20	1	RZ-0577-20-38D	CW, 2" gear width SF ports: 1.5" on the left and 1.25" on the right, 3" wide gear housing
NL20	1	RZ-0577-20-38D	CCW, 2" gear width SF ports: 1.25" on the left and 1.5" on the right, 3" wide gear housing
NK20	1	RZ-0577-20-36D	Bi-Rotation, 2" gear width SF ports: 1.25" on the left and 1.25" on the right, 3" wide gear housing
NK22	1	RZ-0577-22-36D	Bi-Rotation, 2.25" gear width SF ports: 1.25" on the left and 1.25" on the right, 3.25" wide gear housing
NL22	1	RZ-0577-22-38D	CW, 2.25" gear width SF ports: 1.25" on the left and 1.5" on the right, 3.25" wide gear housing
NO22	1	RZ-0577-22-38D	CW, 2.25" gear width SF ports: 1.5" on the left and 1.25" on the right, 3.25" wide gear housing
NM22	1	RZ-0577-22-45D	CCW, 2.25" gear width SF ports: 1.25" on the left and 2" on the right, 3.25" wide gear housing
NP22	1	RZ-0577-22-45D	CW, 2.25" gear width SF ports: 2" on the left and 1.25" on the right, 3.25" wide gear housing
NU22	1	RZ-0577-22-41D	CW, 2.25" gear width SF ports: 2" on the left and 1.5" on the right, 3.25" wide gear housing
NT22	1	RZ-0577-22-39D	CW, 2.25" gear width SF ports: BLANK on the left and 1.5" on the right, 3.25" wide gear housing
NR22	1	RZ-0577-22-41D	CCW, 2.25" gear width SF ports: 1.5" on the left and 2" on the right, 3.25" wide gear housing
NQ22	1	RZ-0577-22-40D	Bi-Rotation, 2.25" gear width SF ports: 1.5" on the left and 1.5" on the right, 3.25" wide gear housing

Gear Housing Codes

SF

Code QTY Part Number Description

NZ22	1	RZ-0577-22-35D	CCW, 2.25" gear width SF ports: 1.25" on the left and BLANK on the right, 3.25" wide gear housing
TA22	1	RZ-0577-22-42D	CCW, 2.25" gear width SF ports: 1" on the left and 2" on the right, 3.25" wide gear housing
NV22	1	RZ-0577-22-47D	CW, 2.25" gear width SF ports: 2.5" on the left and 1.5" on the right, 3.25" wide gear housing
NI22	1	RZ-0577-22-34D	CW, 2.25" gear width SF ports: 1.25" on the left and 1" on the right, 3.25" wide gear housing
NF22	1	RZ-0577-22-34D	CCW, 2.25" gear width SF ports: 1" on the left and 1.25" on the right, 3.25" wide gear housing
ND22	1	RZ-0577-22-39D	CCW, 2.25" gear width SF ports: 1.5" on the left and BLANK on the right, 3.25" wide gear housing
NE22	1	RZ-0577-22-33D	Bi-Rotation, 2.25" gear width SF ports: 1" on the left and 1" on the right, 3.25" wide gear housing
NA22	1	RZ-0577-22-35D	CW, 2.25" gear width SF ports: BLANK on the left and 1.25" on the right, 3.25" wide gear housing
TH22	1	RZ-0577-22-2D	CCW, 2.25" gear width SF ports: 2" on the left and BLANK on the right, 3.25" wide gear housing
TP22	1	RZ-0577-22-42D	CW, 2.25" gear width SF ports: 2" on the left and 1" on the right, 3.25" wide gear housing
TG22	1	RZ-0577-22-2D	CW, 2.25" gear width SF ports: BLANK on the left and 2" on the right, 3.25" wide gear housing
FG22	1	577-01569-22	CCW, 2.25" gear for SF ports: 2" on the left and BLANK on the right, 3.25" wide gear housing, Flow Control Unloader
MM22	1	RZ-0577-22-45DMC	CCW, 2.25" gear for SF ports: 1.25" on the left and 2" on the right, 3.25" wide gear housing, WITH MUNCIE COUNTER-BORE
FH22	1	577-01569-22	CW, 2.25" gear for SF ports: 2" on the left and BLANK on the right, 3.25" wide gear housing, Flow Control Unloader
FH25	1	577-01569-25	CW, 2.5" gear for SF ports: 2" on the left and BLANK on the right, 3.5" wide gear housing, Flow Control Unloader
MM25	1	RZ-0577-25-45DMC	CCW, 2.5" gear for SF ports: 1.25" on the left and 2" on the right, 3.5" wide gear housing, WITH MUNCIE COUNTER-BORE
FG25	1	577-01569-25	CCW, 2.5" gear for SF ports: 2" on the left and BLANK on the right, 3.5" wide gear housing, Flow Control Unloader
TG25	1	RZ-0577-25-2D	CW, 2.5" gear width SF ports: BLANK on the left and 2" on the right, 3.5" wide gear housing
TP25	1	RZ-0577-25-42D	CW, 2.5" gear width SF ports: 2" on the left and 1" on the right, 3.5" wide gear housing
TR25	1	RZ-0577-25-23D	CW, 2.5" gear width SF ports: 2.5" on the left and 1.25" on the right, 3.5" wide gear housing
NS25	1	RZ-0577-25-47D	CCW, 2.5" gear width SF ports: 1.5" on the left and 2.5" on the right, 3.5" wide gear housing
TH25	1	RZ-0577-25-2D	CCW, 2.5" gear width SF ports: 2" on the left and BLANK on the right, 3.5" wide gear housing

Gear Housing Codes

SF

Code QTY Part Number Description

TM25	1	RZ-0577-25-23D	CCW, 2.5" gear width SF ports: 1.25" on the left and 2.5" on the right, 3.5" wide gear housing
NA25	1	RZ-0577-25-35D	CW, 2.5" gear width SF ports: BLANK on the left and 1.25" on the right, 3.5" wide gear housing
NE25	1	RZ-0577-25-33D	Bi-Rotation, 2.5" gear width SF ports: 1" on the left and 1" on the right, 3.5" wide gear housing
ND25	1	RZ-0577-25-39D	CCW, 2.5" gear width SF ports: 1.5" on the left and BLANK on the right, 3.5" wide gear housing
NF25	1	RZ-0577-25-34D	CCW, 2.5" gear width SF ports: 1" on the left and 1.25" on the right, 3.5" wide gear housing
NI25	1	RZ-0577-25-34D	CW, 2.5" gear width SF ports: 1.25" on the left and 1" on the right, 3.5" wide gear housing
NV25	1	RZ-0577-25-47D	CW, 2.5" gear width SF ports: 2.5" on the left and 1.5" on the right, 3.5" wide gear housing
NW25	1	RZ-0577-25-43D	Bi-Rotation, 2.5" gear width SF ports: 2" on the left and 2" on the right, 3.5" wide gear housing
TA25	1	RZ-0577-25-42D	CCW, 2.5" gear width SF ports: 1" on the left and 2" on the right, 3.5" wide gear housing
NZ25	1	RZ-0577-25-35D	CCW, 2.5" gear width SF ports: 1.25" on the left and BLANK on the right, 3.5" wide gear housing
NQ25	1	RZ-0577-25-40D	Bi-Rotation, 2.5" gear width SF ports: 1.5" on the left and 1.5" on the right, 3.5" wide gear housing
NR25	1	RZ-0577-25-41D	CCW, 2.5" gear width SF ports: 1.5" on the left and 2" on the right, 3.5" wide gear housing
NT25	1	RZ-0577-25-39D	CW, 2.5" gear width SF ports: BLANK on the left and 1.5" on the right, 3.5" wide gear housing
NU25	1	RZ-0577-25-41D	CW, 2.5" gear width SF ports: 2" on the left and 1.5" on the right, 3.5" wide gear housing
NP25	1	RZ-0577-25-45D	CW, 2.5" gear width SF ports: 2" on the left and 1.25" on the right, 3.5" wide gear housing
NM25	1	RZ-0577-25-45D	CCW, 2.5" gear width SF ports: 1.25" on the left and 2" on the right, 3.5" wide gear housing
NO25	1	RZ-0577-25-38D	CW, 2.5" gear width SF ports: 1.5" on the left and 1.25" on the right, 3.5" wide gear housing
NL25	1	RZ-0577-25-38D	CCW, 2.5" gear width SF ports: 1.25" on the left and 1.5" on the right, 3.5" wide gear housing
NK25	1	RZ-0577-25-36D	Bi-Rotation, 2.5" gear width SF ports: 1.25" on the left and 1.25" on the right, 3.5" wide gear housing
NK27	1	RZ-0577-27-36D	Bi-Rotation, 2.75" gear width SF ports: 1.25" on the left and 1.25" on the right, 3.75" wide gear housing
NL27	1	RZ-0577-27-38D	CCW, 2.75" gear width SF ports: 1.25" on the left and 1.5" on the right, 3.75" wide gear housing
NO27	1	RZ-0577-27-38D	CW, 2.75" gear width SF ports: 1.5" on the left and 1.25" on the right, 3.75" wide gear housing
NM27	1	RZ-0577-27-45D	CCW, 2.75" gear width SF ports: 1.25" on the left and 2" on the right, 3.75" wide gear housing

Gear Housing Codes

SF

Code	QTY	Part Number	Description
NP27	1	RZ-0577-27-45D	CW, 2.75" gear width SF ports: 2" on the left and 1.25" on the right, 3.75" wide gear housing
NU27	1	RZ-0577-27-41D	CW, 2.75" gear width SF ports: 2" on the left and 1.5" on the right, 3.75" wide gear housing
NT27	1	RZ-0577-27-39D	CW, 2.75" gear width SF ports: BLANK on the left and 1.5" on the right, 3.75" wide gear housing
NR27	1	RZ-0577-27-41D	CCW, 2.75" gear width SF ports: 1.5" on the left and 2" on the right, 3.75" wide gear housing
NQ27	1	RZ-0577-27-40D	Bi-Rotation, 2.75" gear width SF ports: 1.5" on the left and 1.5" on the right, 3.75" wide gear housing
TA27	1	RZ-0577-27-42D	CCW, 2.75" gear width SF ports: 1" on the left and 2" on the right, 3.75" wide gear housing
NW27	1	RZ-0577-27-43D	Bi-Rotation, 2.75" gear width SF ports: 2" on the left and 2" on the right, 3.75" wide gear housing
NV27	1	RZ-0577-27-47D	CW, 2.75" gear width SF ports: 2.5" on the left and 1.5" on the right, 3.75" wide gear housing
ND27	1	RZ-0577-27-39D	CCW, 2.75" gear width SF ports: 1.5" on the left and BLANK on the right, 3.75" wide gear housing
NE27	1	RZ-0577-27-33D	Bi-Rotation, 2.75" gear width SF ports: 1" on the left and 1" on the right, 3.75" wide gear housing
TH27	1	RZ-0577-27-2D	CCW, 2.75" gear width SF ports: 2" on the left and BLANK on the right, 3.75" wide gear housing
NS27	1	RZ-0577-27-47D	CCW, 2.75" gear width SF ports: 1.5" on the left and 2.5" on the right, 3.75" wide gear housing
TP27	1	RZ-0577-27-42D	CW, 2.75" gear width SF ports: 2" on the left and 1" on the right, 3.75" wide gear housing
TG27	1	RZ-0577-27-2D	CW, 2.75" gear width SF ports: BLANK on the left and 2" on the right, 3.75" wide gear housing
TG30	1	RZ-0577-30-2D	CW, 3.00" gear width SF ports: BLANK on the left and 2" on the right, 4.0" wide gear housing
TP30	1	RZ-0577-30-42D	CW, 3.00" gear width SF ports: 2" on the left and 1" on the right, 4.0" wide gear housing
NS30	1	RZ-0577-30-47D	CCW, 3.00" gear width SF ports: 1.5" on the left and 2.5" on the right, 4.0" wide gear housing
TH30	1	RZ-0577-30-2D	CCW, 3.00" gear width SF ports: 2" on the left and BLANK on the right, 4.0" wide gear housing
NE30	1	RZ-0577-30-33D	Bi-Rotation, 3.00" gear width SF ports: 1" on the left and 1" on the right, 4.0" wide gear housing
ND30	1	RZ-0577-30-39D	CCW, 3.00" gear width SF ports: 1.5" on the left and BLANK on the right, 4.0" wide gear housing
NV30	1	RZ-0577-30-47D	CW, 3.00" gear width SF ports: 2.5" on the left and 1.5" on the right, 4.0" wide gear housing
NW30	1	RZ-0577-30-43D	Bi-Rotation, 3.00" gear width SF ports: 2" on the left and 2" on the right, 4.0" wide gear housing

Gear Housing Codes

SF

Code QTY Part Number Description

NX30	1	RZ-0577-30-46D	CCW, 3.00" gear width SF ports: 2" on the left and 2.5" on the right, 4.0" wide gear housing
NY30	1	RZ-0577-30-46D	CW, 3.00" gear width SF ports: 2.5" on the left and 2" on the right, 4.0" wide gear housing
TA30	1	RZ-0577-30-42D	CCW, 3.00" gear width SF ports: 1" on the left and 2" on the right, 4.0" wide gear housing
NQ30	1	RZ-0577-30-40D	Bi-Rotation, 3.00" gear width SF ports: 1.5" on the left and 1.5" on the right, 4.0" wide gear housing
NR30	1	RZ-0577-30-41D	CCW, 3.00" gear width SF ports: 1.5" on the left and 2" on the right, 4.0" wide gear housing
NT30	1	RZ-0577-30-39D	CW, 3.00" gear width SF ports: BLANK on the left and 1.5" on the right, 4.0" wide gear housing
NU30	1	RZ-0577-30-41D	CW, 3.00" gear width SF ports: 2" on the left and 1.5" on the right, 4.0" wide gear housing
NP30	1	RZ-0577-30-45D	CW, 3.00" gear width SF ports: 2" on the left and 1.25" on the right, 4.0" wide gear housing
NM30	1	RZ-0577-30-45D	CCW, 3.00" gear width SF ports: 1.25" on the left and 2" on the right, 4.0" wide gear housing
NO30	1	RZ-0577-30-38D	CW, 3.00" gear width SF ports: 1.5" on the left and 1.25" on the right, 4.0" wide gear housing
NL30	1	RZ-0577-30-38D	CCW, 3.00" gear width SF ports: 1.25" on the left and 1.5" on the right, 4.0" wide gear housing
NK30	1	RZ-0577-30-36D	Bi-Rotation, 3.00" gear width SF ports: 1.25" on the left and 1.25" on the right, 4.0" wide gear housing

Gear Housing Codes

ALL DRY VALVE PUMPS REQUIRE DRY VALVE COMPONENTS

QTY	Part Number	Description
2	AZ-0947-TC	7500 DRY VALVE THRUST PLATE
2	TA-2995-252	HOUSING GASKET
2	VA-0558-DV	DRY VALVE RING SEAL
4	280-1971-033	THRUST PLATE SEALS

ALL WINCH MOTORS REQUIRE THESE COMPONENTS

QTY	Part Number	Description
2	AZ-0947-W	7500 WINCH MOTOR THRUST PLATE
2	TA-2995-252	HOUSING GASKET
4	280-1971-033	THRUST PLATE SEALS

ALL UNLOADER PUMPS REQUIRE THESE COMPONENTS

QTY	Part Number	Description
2	AZ-0947-ULS	7500 UNLOADER THRUST PLATE
2	TA-2995-252	HOUSING GASKET
4	280-1971-033	THRUST PLATE SEALS

Gear Housing Small Parts Codes

Code	QTY	Part Number	Description
ML15	4	280-1774-939	THRUST PLATE SEAL
ML17	4	280-1774-939	THRUST PLATE SEAL
MM20	4	280-1774-939	THRUST PLATE SEAL
MM22	4	280-1774-939	THRUST PLATE SEAL
MM25	4	280-1774-939	THRUST PLATE SEAL
FD12	4	280-1774-939	THRUST PLATE SEAL
FD15	4	280-1774-939	THRUST PLATE SEAL
FT12	4	280-1774-939	THRUST PLATE SEAL
FT15	4	280-1774-939	THRUST PLATE SEAL
FH17	4	280-1774-939	THRUST PLATE SEAL
FH20	4	280-1774-939	THRUST PLATE SEAL
FH22	4	280-1774-939	THRUST PLATE SEAL
FH25	4	280-1774-939	THRUST PLATE SEAL
FG17	4	280-1774-939	THRUST PLATE SEAL
FG20	4	280-1774-939	THRUST PLATE SEAL
FG22	4	280-1774-939	THRUST PLATE SEAL
FG25	4	280-1774-939	THRUST PLATE SEAL
FG20	4	280-1971-033	7600 DOWEL PIN
FG17	4	280-1971-033	7600 DOWEL PIN
FH25	4	280-1971-033	7600 DOWEL PIN
FH22	4	280-1971-033	7600 DOWEL PIN
FH20	4	280-1971-033	7600 DOWEL PIN
FH17	4	280-1971-033	7600 DOWEL PIN
FT15	4	280-1971-033	7600 DOWEL PIN
FT12	4	280-1971-033	7600 DOWEL PIN
FD15	4	280-1971-033	7600 DOWEL PIN
FD12	4	280-1971-033	7600 DOWEL PIN
MM25	4	280-1971-033	7600 DOWEL PIN
MM22	4	280-1971-033	7600 DOWEL PIN
MM20	4	280-1971-033	7600 DOWEL PIN
ML17	4	280-1971-033	7600 DOWEL PIN
ML15	4	280-1971-033	7600 DOWEL PIN
FG25	4	280-1971-033	7600 DOWEL PIN
FG22	4	280-1971-033	7600 DOWEL PIN
ML15	2	AZ-0947-DVS	DRY VALVE THRUST PLATE
ML17	2	AZ-0947-DVS	DRY VALVE THRUST PLATE
MM20	2	AZ-0947-DVS	DRY VALVE THRUST PLATE

Gear Housing Small Parts Codes

Code	QTY	Part Number	Description
MM22	2	AZ-0947-DVS	DRY VALVE THRUST PLATE
MM25	2	AZ-0947-DVS	DRY VALVE THRUST PLATE
FD12	2	AZ-0947-DVS	DRY VALVE THRUST PLATE
FD15	2	AZ-0947-DVS	DRY VALVE THRUST PLATE
FT12	2	AZ-0947-DVS	DRY VALVE THRUST PLATE
FT15	2	AZ-0947-DVS	DRY VALVE THRUST PLATE
FH17	2	AZ-0947-DVS	DRY VALVE THRUST PLATE
FH20	2	AZ-0947-DVS	DRY VALVE THRUST PLATE
FH22	2	AZ-0947-DVS	DRY VALVE THRUST PLATE
FH25	2	AZ-0947-DVS	DRY VALVE THRUST PLATE
FG17	2	AZ-0947-DVS	DRY VALVE THRUST PLATE
FG20	2	AZ-0947-DVS	DRY VALVE THRUST PLATE
FG22	2	AZ-0947-DVS	DRY VALVE THRUST PLATE
FG25	2	AZ-0947-DVS	DRY VALVE THRUST PLATE
FG20	2	TA-2995-252	SQUARE GASKET
FG17	2	TA-2995-252	SQUARE GASKET
FH25	2	TA-2995-252	SQUARE GASKET
FH22	2	TA-2995-252	SQUARE GASKET
FH20	2	TA-2995-252	SQUARE GASKET
FH17	2	TA-2995-252	SQUARE GASKET
FT15	2	TA-2995-252	SQUARE GASKET
FT12	2	TA-2995-252	SQUARE GASKET
FD15	2	TA-2995-252	SQUARE GASKET
FD12	2	TA-2995-252	SQUARE GASKET
MM25	2	TA-2995-252	SQUARE GASKET
MM22	2	TA-2995-252	SQUARE GASKET
MM20	2	TA-2995-252	SQUARE GASKET
ML17	2	TA-2995-252	SQUARE GASKET
ML15	2	TA-2995-252	SQUARE GASKET
FG25	2	TA-2995-252	SQUARE GASKET
FG22	2	TA-2995-252	SQUARE GASKET
FG20	2	W045-38	3/8" ORB PLUG
FG22	2	W045-38	3/8" ORB PLUG
FG25	2	W045-38	3/8" ORB PLUG
FD12	2	W045-38	3/8" ORB PLUG
FD15	2	W045-38	3/8" ORB PLUG
FT12	2	W045-38	3/8" ORB PLUG

Gear Housing Small Parts Codes

Code	QTY	Part Number	Description
FT15	2	W045-38	3/8" ORB PLUG
FH17	2	W045-38	3/8" ORB PLUG
FH20	2	W045-38	3/8" ORB PLUG
FH22	2	W045-38	3/8" ORB PLUG
FH25	2	W045-38	3/8" ORB PLUG
FG17	2	W045-38	3/8" ORB PLUG
ALL	4	280-1971-033	DOWEL PINS
ALL	2	AZ-0947-TC	7500 THRUST PLATE
ALL	2	TA-2995-252	HOUSING GASKET

Gear Shaft Codes

Integral

Code QTY Part Number Description

6	1	MD-0024L-1-30	SINGLE Gear Set With 3.00" Gear Width and SAE "C" (1-1/4" Dia.-14 TOOTH) SPLINE with 2.187" Shaft Extension ,Used In SINGLE Section Units
6	1	MD-0024L-1-27	SINGLE Gear Set With 2.75" Gear Width and SAE "C" (1-1/4" Dia.-14 TOOTH) SPLINE with 2.187" Shaft Extension ,Used In SINGLE Section Units
6	1	MD-0024L-1-25	SINGLE Gear Set With 2.5" Gear Width and SAE "C" (1-1/4" Dia.-14 TOOTH) SPLINE with 2.187" Shaft Extension ,Used In SINGLE Section Units
6	1	MD-0024L-1-22	SINGLE Gear Set With 2.25" Gear Width and SAE "C" (1-1/4" Dia.-14 TOOTH) SPLINE with 2.187" Shaft Extension ,Used In SINGLE Section Units
6	1	MD-0024L-1-20	SINGLE Gear Set With 2" Gear Width and SAE "C" (1-1/4" Dia.-14 TOOTH) SPLINE with 2.187" Shaft Extension ,Used In SINGLE Section Units
6	1	MD-0024L-1-17	SINGLE Gear Set With 1.75" Gear Width and SAE "C" (1-1/4" Dia.-14 TOOTH) SPLINE with 2.187" Shaft Extension ,Used In SINGLE Section Units
00	1	ZE-0024L-1-25	SINGLE Gear Set With 2.5" Gear Width and SAE "C" (1-1/4" Dia. KEYED) KEYED with 2.187" Shaft Extension ,Used In SINGLE Section Units
00	1	ZE-0024L-1-22	SINGLE Gear Set With 2.25" Gear Width and SAE "C" (1-1/4" Dia. KEYED) KEYED with 2.187" Shaft Extension ,Used In SINGLE Section Units
00	1	ZE-0024L-1-20	SINGLE Gear Set With 2" Gear Width and SAE "C" (1-1/4" Dia. KEYED) KEYED with 2.187" Shaft Extension ,Used In SINGLE Section Units
00	1	ZE-0024L-1-17	SINGLE Gear Set With 1.75" Gear Width and SAE "C" (1-1/4" Dia. KEYED) KEYED with 2.187" Shaft Extension ,Used In SINGLE Section Units
00	1	ZE-0024L-1-15	SINGLE Gear Set With 1.5" Gear Width and SAE "C" (1-1/4" Dia. KEYED) KEYED with 2.187" Shaft Extension ,Used In SINGLE Section Units
6	1	MD-0024L-3-30	MULTIPLE Gear Set With 3.00" Gear Width and SAE "C" (1-1/4" Dia.-14 TOOTH) SPLINE with 2.187" Shaft Extension ,Used In MULTIPLE Section Units
6	1	MD-0024L-3-27	MULTIPLE Gear Set With 2.75" Gear Width and SAE "C" (1-1/4" Dia.-14 TOOTH) SPLINE with 2.187" Shaft Extension ,Used In MULTIPLE Section Units
6	1	MD-0024L-3-25	MULTIPLE Gear Set With 2.5" Gear Width and SAE "C" (1-1/4" Dia.-14 TOOTH) SPLINE with 2.187" Shaft Extension ,Used In MULTIPLE Section Units
6	1	MD-0024L-3-22	MULTIPLE Gear Set With 2.25" Gear Width and SAE "C" (1-1/4" Dia.-14 TOOTH) SPLINE with 2.187" Shaft Extension ,Used In MULTIPLE Section Units
6	1	MD-0024L-3-20	MULTIPLE Gear Set With 2" Gear Width and SAE "C" (1-1/4" Dia.-14 TOOTH) SPLINE with 2.187" Shaft Extension ,Used In MULTIPLE Section Units
6	1	MD-0024L-3-17	MULTIPLE Gear Set With 1.75" Gear Width and SAE "C" (1-1/4" Dia.-14 TOOTH) SPLINE with 2.187" Shaft Extension ,Used In MULTIPLE Section Units
6	1	MD-0024L-3-15	MULTIPLE Gear Set With 1.5" Gear Width and SAE "C" (1-1/4" Dia.-14 TOOTH) SPLINE with 2.187" Shaft Extension ,Used In MULTIPLE Section Units
6	1	MD-0024L-3-12	MULTIPLE Gear Set With 1.25" Gear Width and SAE "C" (1-1/4" Dia.-14 TOOTH) SPLINE with 2.187" Shaft Extension ,Used In MULTIPLE Section Units
6	1	MD-0024L-3-10	MULTIPLE Gear Set With 1" Gear Width and SAE "C" (1-1/4" Dia.-14 TOOTH) SPLINE with 2.187" Shaft Extension ,Used In MULTIPLE Section Units
00	1	ZE-0024L-3-30	MULTIPLE Gear Set With 3.00" Gear Width and SAE "C" (1-1/4" Dia. KEYED) KEYED with 2.187" Shaft Extension ,Used In MULTIPLE Section Units
00	1	ZE-0024L-3-12	MULTIPLE Gear Set With 1.25" Gear Width and SAE "C" (1-1/4" Dia. KEYED) KEYED with 2.187" Shaft Extension ,Used In MULTIPLE Section Units
	1	ZE-0024L-3-30	Gear Set With 3.00" Gear Width and SAE "C" (1-1/4") KEYED ,Used In MULTIPLE Section Units
00	1	ZE-0024L-3-20	MULTIPLE Gear Set With 2" Gear Width and SAE "C" (1-1/4" Dia. KEYED) KEYED with 2.187" Shaft Extension ,Used In Section Units

Code QTY Part Number Description

30	1	OZ-0995L-30	MULTIPLE Gear Set with 3.00" Gear Width
27	1	OZ-0995L-27	MULTIPLE Gear Set with 2.75" Gear Width
25	1	OZ-0995L-25	MULTIPLE Gear Set with 2.5" Gear Width
22	1	OZ-0995L-22	MULTIPLE Gear Set with 2.25" Gear Width
20	1	OZ-0995L-20	MULTIPLE Gear Set with 2" Gear Width
17	1	OZ-0995L-17	MULTIPLE Gear Set with 1.75" Gear Width
15	1	OZ-0995L-15	MULTIPLE Gear Set with 1.5" Gear Width
12	1	OZ-0995L-12	MULTIPLE Gear Set with 1.25" Gear Width
10	1	OZ-0995L-10	MULTIPLE Gear Set with 1" Gear Width
07	1	OZ-0995L-07	MULTIPLE Gear Set with 0.75" Gear Width
05	1	OZ-0995L-05	MULTIPLE Gear Set with 0.5" Gear Width

Continental Shaft Codes

Code	QTY	Part Number	Description
-------------	------------	--------------------	--------------------

C 6	1	ZR-0024	SAE "C" (1-1/4" Dia.-14 TOOTH) SPLINE shaft with 2.187" Shaft Extension
-----	---	---------	---

C 7	1	ZR-0024-XL	1-1/4" Dia.-14 TOOTH EXTRA LONG SPLINE shaft with Extra long
-----	---	------------	--

C 8	1	ZR-0024-SHD	SAE "D" SPLINE shaft
-----	---	-------------	----------------------

C00	1	ZK-0024	SAE "C" (1-1/4" Dia. KEYED) KEYED shaft with 2.187" Shaft Extension
-----	---	---------	---

C14	1	023-01664	SAE "B" (7/8" Dia.- 13 TOOTH) SPLINE shaft with 1.250" Shaft Extension
-----	---	-----------	--

C9	1	ZR-0024-SHD-XL	SAE "D" SPLINE shaft with Extra long
----	---	----------------	--------------------------------------

Drive Shaft Small Parts

Code	QTY	Part Number	Description	Type
------	-----	-------------	-------------	------

Drive Shaft Small Parts

Code	QTY	Part Number	Description
1	1	ZA-0022	CONNECTING SHAFT

Code QTY Part Number Description

A	1	YZ-0576D	Bi-Rotation Pump NONE with BLANK BLANK inlet and BLANK BLANK outlet connecting to BLANK
C	1	XZ-0576-11D	CCW Pump Type I with BLANK BLANK inlet and BLANK BLANK outlet connecting to THRU
B	1	XZ-0576-11D	CW Pump Type I with BLANK BLANK inlet and BLANK BLANK outlet connecting to BLANK

Bearing Carrier Codes

ORB

Code QTY Part Number Description

BB	1	CA-0576-2-64D	Bi-Rotation Pump NONE with 1" ORB inlet and BLANK ORB outlet connecting to THRU
AA	1	CA-0576-2-67D	Bi-Rotation Pump NONE with 1.25" ORB inlet and BLANK ORB outlet connecting to THRU

Bearing Carrier Codes

SF

Code QTY Part Number Description

LL	1	CA-0576-2-36D	Bi-Rotation Pump NONE with 1.25" SF inlet and BLANK SF outlet connecting to THRU
MM	1	CA-0576-2-40D	Bi-Rotation Pump NONE with 1.5" SF inlet and BLANK SF outlet connecting to THRU

Bearing Carrier Small Parts Codes

Code QTY Part Number Description