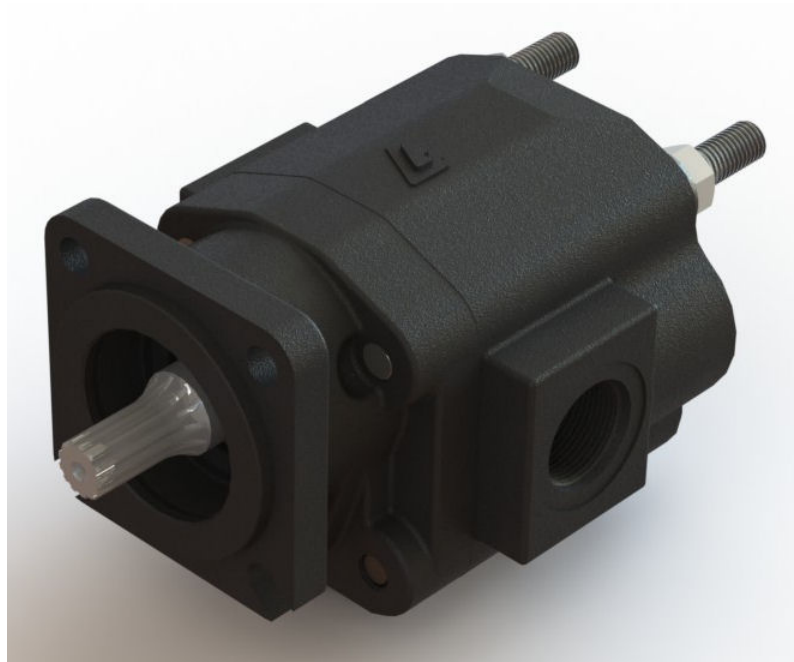


Permco



5151 Series Code Book

Disclaimer

THROUGH THE USE OF THIS CATALOG ALL THE COMPONENT PARTS OF ANY PERMCO PUMP OR MOTOR CAN BE DETERMINED EXCLUDING FASTENERS.

THIS CODE BOOK IS FOR THE 5151 SERIES PUMPS AND MOTORS.

EACH MODEL SERIES IS DIVIDED IN THE FOLLOWING MANNER:

- I. SHAFT END COVERS FOLLOWED BY SHAFT END COVER SMALL PARTS.
- II. PORT END COVERS FOLLOWED BY PORT END COVER SMALL PARTS.
- III. GEAR HOUSINGS FOLLOWED BY:
 - A. GEAR HOUSING SMALL PARTS.
 - B. GEARS.
- IV. DRIVE SHAFTS OR GEAR/SHAFTS FOLLOWED BY DRIVE SHAFT SMALL PARTS.

COPYRIGHT © AUGUST 2002 BY PERMCO, INC. ALL RIGHTS RESERVED. NO PART OF THIS BOOK MAY BE REPRODUCED, STORED IN A RETRIEVAL SYSTEM, OR TRANSMITTED IN ANY FORM OR BY ANY MEANS ELECTRONIC, MECHANICAL, PHOTOCOPYING, RECORDING, OR OTHERWISE WITHOUT PRIOR WRITTEN PERMISSION OF PERMCO, INC.

How To

BELOW IS AN EXAMPLE OF HOW TO USE THIS CATALOG:

SINGLE ASSEMBLY CODE: P2100A031ADXK20-14

P	DENOTES PUMP (M DENOTES MOTOR)
5151	SERIES
A, C	MODEL TYPE (A-SINGLE C-SPECIAL DRIVE SHAFT)
224	SHAFT END COVER
AA	PORT END COVER
XQ25	GEAR HOUSING (FIRST)
54	DRIVE SHAFT

THE ROTATION OF ANY UNIT IS IDENTIFIED BY THE FIRST DIGIT OF THE SHAFT END COVER CODE (SEE INDIVIDUAL SERIES COVER PAGES). THE GEAR SIZE IS DENOTED BY THE TWO (2) DIGITS IN THE GEAR HOUSING CODE.

CODE. :	17	20	22	25	27
SIZE IN INCHES:	1-3/4	2	2-1/4	2-1/2	2-3/4

ROTATION IS VIEWED LOOKING AT SHAFT END (SHAFT ON TOP.)
AN ASTERISK (*) DENOTES EITHER OBSOLETE OR SPECIAL. PLEASE CONSULT FACTORY AS THEY MAY BE REPLACED BY OTHER STANDARD ITEMS.

Identification

STUD HOLES - 4 AT 11/16 DIAMETER
STUD DIA. - 5/8 IN.
ONE-PIECE DRIVE SHAFT AND GEAR (INTEGRAL)
HOUSING HEIGHT - 6 INCHES
HOUSING WIDTH - GEAR SIZE + 3/4 INCH
BOLT TORQUE - 200 FT-LBS

Gear Widths available

1-3/4, 2, 2-1/4, 2-1/2 AND 2-3/4 INCHES

Shaft End Covers

THE TYPE OF SHAFT END COVER IS DETERMINED BY THE ENTIRE 3 DIGIT DESIGNATION.
THERE ARE TWO BASIC TYPES OF SHAFT END COVERS WHICH ARE DIFFERENTIATED BY THE BEARING CONFIGURATION.

THIS SERIES IS AVAILABLE BOTH WITH AND WITHOUT OUTBOARD BEARINGS.

TYPE I - WITH SINGLE OUTBOARD BALL BEARING OR WITHOUT.
TYPE II - WITHOUT OUTBOARD BEARING.

THE FIRST DIGIT OF THE SHAFT END COVER CODE DESIGNATES PUMP/MOTOR ROTATION.

ALL CODES BEGINNING WITH	CW	CCW	DBL	PUMP	MOTOR	TYPE	BEARING
0	XX			XX		I II	
1		XX		XX		I II	
2			XX	XX		I II	
3	XX			XX		I	XX
4		XX		XX		I	XX
5			XX	XX		I	XX
7			XX		XX	I	XX
8			XX		XX	I II	

THE SHAFT END COVER TYPE AND DRIVE SHAFT TYPE MUST HAVE THE SAME NUMBER DESIGNATION.

Drive Shafts

C - DENOTES SPECIAL SEPARATE DRIVE SHAFT. (REFER TO CODING ILLUSTRATION ON INTRODUCTORY PAGES).
THESE CODES MUST BE USED IN CONJUNCTION WITH SHAFT END COVERS WHICH CONTAIN OUTBOARD BEARINGS. HOWEVER A DIFFERENT SHAFT SEAL IS REQUIRED. SEE DRIVE SHAFT PARTS.

Gears

CODES MARKED ^ ARE GEAR SETS FOR SINGLE UNIT APPLICATIONS.

Housings

1. CODES MARKED ' ARE FOR LOW PRESSURE INLET PORT ONLY.
2. CODES MARKED + ARE GOOD FOR PRESSURES UP TO 2500 PSI. APPLIES TO SMALLEST PORT.
3. ORB PORTS ARE RECOMMENDED FOR USE AT PRESSURES UP TO 2500 PSI. FOR HIGHER PRESSURES CONSULT FACTORY.

Accessories

BOLTS & WASHERS			
CODE	QTY.	PART NUMBER	DESCRIPTION
17	4	W1-78	HEX CAP SCREW 5/8-11 x 5.5" LONG
20	4	W1-65	HEX CAP SCREW 5/8-11 x 6.0" LONG
22	4	W1-65	HEX CAP SCREW 5/8-11 x 6.0" LONG
25	4	W1-89	HEX CAP SCREW 5/8-11 x 6.5" LONG
27	4	W1-89	HEX CAP SCREW 5/8-11 x 6.5" LONG
	4	W033-2	5/8" WASHER

Shaft End cover Codes

Code	QTY	Part Number	Description
024	1	574-00885	CW 5151 Pump Type II SEC with SAE "B" (4" Diameter) 2 & 4 Bolts No Outboard Bearing
031	1	GA-0574-3D	CW 5151 Pump Type I SEC with SAE "B" (4" Diameter) 4 Bolts No Outboard Bearing
090	1	574-01889	CW 5151 Pump Type I SEC with SAE "B" (4" Diameter) 2 & 4 Bolts No Outboard Bearing
124	1	574-00885	CCW 5151 Pump Type II SEC with SAE "B" (4" Diameter) 2 & 4 Bolts No Outboard Bearing
131	1	GA-0574-3D	CCW 5151 Pump Type I SEC with SAE "B" (4" Diameter) 4 Bolts No Outboard Bearing
190	1	574-01889	CCW 5151 Pump Type I SEC with SAE "B" (4" Diameter) 2 & 4 Bolts No Outboard Bearing
224	1	574-00885	Bi-Rotation 5151 Pump Type II SEC with SAE "B" (4" Diameter) 2 & 4 Bolts No Outboard Bearing
231	1	GA-0574-3D	Bi-Rotation 5151 Pump Type I SEC with SAE "B" (4" Diameter) 4 Bolts No Outboard Bearing
267	1	JA-0574-3D	Bi-Rotation 5151 Pump Type I SEC with SAE "C" (5" PILOT) 4 Bolts No Outboard Bearing
285	1	IA-0574-3D	Bi-Rotation 5151 Pump Type II SEC with SAE "B" (4" PILOT) 2 Bolts No Outboard Bearing
286	1	QA-0574-3D	Bi-Rotation 5151 Pump Type I SEC with SAE "B" (4" PILOT) 2 Bolts No Outboard Bearing
287	1	MA-0574-3D	Bi-Rotation 5151 Pump Type I SEC with SAE "C" (5" PILOT) 2 Bolts No Outboard Bearing
288	1	KA-0574-3D	Bi-Rotation 5151 Pump Type II SEC with SAE "C" (5" PILOT) 2 Bolts No Outboard Bearing
290	1	574-01889	Bi-Rotation 5151 Pump Type I SEC with SAE "B" (4" Diameter) 2 & 4 Bolts No Outboard Bearing
299	1	LA-0574-3D	Bi-Rotation 5151 Pump Type I SEC with NO PILOT PAD MOUNT No Outboard Bearing
390	1	574-01889	CW 5151 Pump Type I SEC with SAE "B" (4" Diameter) 2 & 4 Bolts With Outboard Bearing
490	1	574-01889	CCW 5151 Pump Type I SEC with SAE "B" (4" Diameter) 2 & 4 Bolts With Outboard Bearing
531	1	GA-0574-3D	Bi-Rotation 5151 Pump Type I SEC with SAE "B" (4" PILOT) 4 Bolts With Outboard Bearing
551	1	574C-D0156	Bi-Rotation 5151 Pump Type I SEC with ISO 7653 80 MM PILOT 4 Bolts With Outboard Bearing
567	1	JA-0574-3D	Bi-Rotation 5151 Pump Type I SEC with SAE "C" (5" PILOT) 4 Bolts With Outboard Bearing
586	1	QA-0574-3D	Bi-Rotation 5151 Pump Type I SEC with SAE "B" (4" PILOT) 2 Bolts With Outboard Bearing
587	1	MA-0574-3D	Bi-Rotation 5151 Pump Type I SEC with SAE "C" (5" PILOT) 2 Bolts With Outboard Bearing
590	1	574-01889	Bi-Rotation 5151 Pump Type I SEC with SAE "B" (4" Diameter) 2 & 4 Bolts With Outboard Bearing
599	1	LA-0574-3D	Bi-Rotation 5151 Pump Type I SEC with NO PILOT PAD MOUNT With Outboard Bearing
731	1	GA-0574-4D	Bi-Rotation 5151 Motor Type I SEC with SAE "B" (4" PILOT) 4 Bolts With Outboard Bearing
751	1	574C-D0156-4	Bi-Rotation 5151 Motor Type I SEC with ISO 7653 80 MM PILOT 4 Bolts With Outboard Bearing

Shaft End cover Codes

Code	QTY	Part Number	Description
767	1	JA-0574-6D	Bi-Rotation 5151 Motor Type I SEC with SAE "C" (5" PILOT) 4 Bolts With Outboard Bearing
786	1	QA-0574-5D	Bi-Rotation 5151 Motor Type I SEC with SAE "B" (4" PILOT) 2 Bolts With Outboard Bearing
787	1	MA-0574-5D	Bi-Rotation 5151 Motor Type I SEC with SAE "C" (5" PILOT) 2 Bolts With Outboard Bearing
790	1	574-01889	Bi-Rotation 5151 Motor Type I SEC with SAE "B" (4" Diameter) 2 & 4 Bolts With Outboard Bearing
799	1	LA-0574-4D	Bi-Rotation 5151 Motor Type I SEC with NO PILOT PAD MOUNT With Outboard Bearing
824	1	574-00885	Bi-Rotation 5151 Motor Type II SEC with SAE "B" (4" Diameter) 2 & 4 Bolts No Outboard Bearing
831	1	GA-0574-4D	Bi-Rotation 5151 Motor Type I SEC with SAE "B" (4" PILOT) 4 Bolts No Outboard Bearing
867	1	JA-0574-6D	Bi-Rotation 5151 Motor Type I SEC with SAE "C" (5" PILOT) 4 Bolts No Outboard Bearing
886	1	QA-0574-5D	Bi-Rotation 5151 Motor Type I SEC with SAE "B" (4" PILOT) 2 Bolts No Outboard Bearing
887	1	MA-0574-5D	Bi-Rotation 5151 Motor Type I SEC with SAE "C" (5" Diameter) 2 Bolts No Outboard Bearing
888	1	KA-0574-7D	Bi-Rotation 5151 Motor Type II SEC with SAE "C" (5" PILOT) 2 Bolts No Outboard Bearing
890	1	574-01889	Bi-Rotation 5151 Motor Type I SEC with SAE "B" (4" Diameter) 2 & 4 Bolts No Outboard Bearing
899	1	LA-0574-4D	Bi-Rotation 5151 Motor Type I SEC with NO PILOT PAD MOUNT No Outboard Bearing

Shaft End cover Small Parts Codes

Code	QTY	Part Number	Description
090	1	MA-0558-1XS	RING SEAL
090	2	R-0921	BEARING
090	1	S-0280	PLUG
090	1	W0-00	PLUG
090	1	W62-26-17	SEAL
190	1	MA-0558-1XS	RING SEAL
190	2	R-0921	BEARING
190	1	S-0280	PLUG
190	1	W0-00	PLUG
190	1	W62-26-17	SEAL
224	2	L-0280-K	CHECK VALVE
224	1	MA-0558-1XS	RING SEALS
224	2	R-0921	ROLLER BEARING
224	1	W0-00	1/4" NPT PIPE PLUG
224	1	W62-26-17	DOUBLE LIP SEAL
231	2	L-0280-K	CHECK VALVE
231	1	MA-0558-1XS	RING SEALS
231	2	R-0921	ROLLER BEARING
231	1	W62-26-17	DOUBLE LIP SEAL
267	2	L-0280-K	CHECK VALVE
267	1	MA-0558-1XS	RING SEALS
267	2	R-0921	ROLLER BEARING
267	1	W62-26-17	DOUBLE LIP SEAL
285	2	L-0280-K	CHECK VALVE
285	1	MA-0558-1XS	RING SEALS
285	2	R-0921	ROLLER BEARING
285	1	W62-26-17	DOUBLE LIP SEAL
286	2	L-0280-K	CHECK VALVE
286	1	MA-0558-1XS	RING SEALS
286	2	R-0921	ROLLER BEARING
286	1	W62-26-17	DOUBLE LIP SEAL
287	2	L-0280-K	CHECK VALVE
287	1	MA-0558-1XS	RING SEALS
287	2	R-0921	ROLLER BEARING

Shaft End cover Small Parts Codes

Code	QTY	Part Number	Description
287	1	W62-26-17	DOUBLE LIP SEAL
288	2	L-0280-K	CHECK VALVE
288	1	MA-0558-1XS	RING SEALS
288	2	R-0921	ROLLER BEARING
288	1	W62-26-17	DOUBLE LIP SEAL
290	2	L-0280-K	CHECK VALVE
290	1	MA-0558-1XS	RING SEAL
290	2	R-0921	BEARING
290	1	W0-00	PLUG
290	1	W62-26-17	SEAL
299	2	L-0280-K	CHECK VALVE
299	1	MA-0558-1XS	RING SEALS
299	2	R-0921	ROLLER BEARING
299	1	W62-26-17	DOUBLE LIP SEAL
390	1	MA-0558-1XS	RING SEAL
390	2	R-0921	BEARING
390	1	S-0280	PLUG
390	1	W0-00	PLUG
390	1	W023-283	RETAINING RING
390	1	W58-47	BEARING
390	1	W62-26-17	SEAL
490	1	MA-0558-1XS	RING SEAL
490	2	R-0921	BEARING
490	1	S-0280	PLUG
490	1	W0-00	PLUG
490	1	W023-283	RETAINING RING
490	1	W58-47	BEARING
490	1	W62-26-17	SEAL
531	2	L-0280-K	CHECK VALVE
531	1	MA-0558-1XS	RING SEALS
531	2	R-0921	ROLLER BEARING
531	1	W023-283	RETAINING RING
531	1	W58-47	BALL BEARING
531	1	W62-26-17	DOUBLE LIP SEAL

Shaft End cover Small Parts Codes

Code	QTY	Part Number	Description
551	1	226-01015	DOUBLE LIP SEAL
551	1	558-01017	SPACER
551	1	565C-00009	RETAINING RING
551	1	565C-00013	SNAP RING
551	1	565C-D0110	SEAL REATINER
551	1	921C-00002	BALL BEARING
551	2	L-0280-K	CHECK VALVE
551	1	MA-0558-1XS	RING SEALS
551	2	R-0921	ROLLER BEARING
567	2	L-0280-K	CHECK VALVE
567	1	MA-0558-1XS	RING SEALS
567	2	R-0921	ROLLER BEARING
567	1	W023-283	RETAINING RING
567	1	W58-47	BALL BEARING
567	1	W62-26-17	DOUBLE LIP SEAL
586	2	L-0280-K	CHECK VALVE
586	1	MA-0558-1XS	RING SEALS
586	2	R-0921	ROLLER BEARING
586	1	W023-283	RETAINING RING
586	1	W58-47	BALL BEARING
586	1	W62-26-17	DOUBLE LIP SEAL
587	2	L-0280-K	CHECK VALVE
587	1	MA-0558-1XS	RING SEALS
587	2	R-0921	ROLLER BEARING
587	1	W023-283	RETAINING RING
587	1	W58-47	BALL BEARING
587	1	W62-26-17	DOUBLE LIP SEAL
590	2	L-0280-K	CHECK VALVE
590	1	MA-0558-1XS	RING SEAL
590	2	R-0921	BEARING
590	1	W0-00	PLUG
590	1	W023-283	RETAINING RING
590	1	W58-47	BEARING
590	1	W62-26-17	SEAL

Shaft End cover Small Parts Codes

Code	QTY	Part Number	Description
599	2	L-0280-K	CHECK VALVE
599	1	MA-0558-1XS	RING SEALS
599	2	R-0921	ROLLER BEARING
599	1	W023-283	RETAINING RING
599	1	W58-47	BALL BEARING
599	1	W62-26-17	DOUBLE LIP SEAL
731	2	L-0280-K	CHECK VALVE
731	1	MA-0558-1XS	RING SEALS
731	2	R-0921	ROLLER BEARING
731	1	W0-00	1/4" NPT PIPE PLUG
731	1	W023-283	RETAINING RING
731	1	W58-47	BALL BEARING
731	1	W62-49-8	MOTOR SEAL
731	1	ZB-0558	SPACER
751	1	280-1772-186	MOTOR SEAL
751	1	558-01017	SPACER
751	1	565C-00009	RETAINING RING
751	1	565C-00013	SNAP RING
751	1	565C-D0110	SEAL RETAINER
751	1	921C-00002	BALL BEARING
751	2	L-0280-K	CHECK VALVE
751	1	MA-0558-1XS	RING SEALS
751	2	R-0921	ROLLER BEARING
751	1	W0-00	1/4" NPT PIPE PLUG
767	2	L-0280-K	CHECK VALVE
767	1	MA-0558-1XS	RING SEALS
767	2	R-0921	ROLLER BEARING
767	1	W0-00	1/4" NPT PIPE PLUG
767	1	W023-283	RETAINING RING
767	1	W58-47	BALL BEARING
767	1	W62-49-8	MOTOR SEAL
767	1	ZB-0558	SPACER
786	2	L-0280-K	CHECK VALVE
786	1	MA-0558-1XS	RING SEALS

Shaft End cover Small Parts Codes

Code	QTY	Part Number	Description
786	2	R-0921	ROLLER BEARING
786	1	W0-00	1/4" NPT PIPE PLUG
786	1	W023-283	RETAINING RING
786	1	W58-47	BALL BEARING
786	1	W62-49-8	MOTOR SEAL
786	1	ZB-0558	SPACER
787	2	L-0280-K	CHECK VALVE
787	1	MA-0558-1XS	RING SEALS
787	2	R-0921	ROLLER BEARING
787	1	W0-00	1/4" NPT PIPE PLUG
787	1	W023-283	RETAINING RING
787	1	W58-47	BALL BEARING
787	1	W62-49-8	MOTOR SEAL
787	1	ZB-0558	SPACER
790	2	L-0280-K	CHECK VALVE
790	1	MA-0558-1XS	RING SEAL
790	2	R-0921	BEARING
790	1	W0-00	PLUG
790	1	W023-283	RETAINING RING
790	1	W58-47	BEARING
790	1	W62-49-8	SEAL
790	1	ZB-0558	SEAL RETAINER
799	2	L-0280-K	CHECK VALVE
799	1	MA-0558-1XS	RING SEALS
799	2	R-0921	ROLLER BEARING
799	1	W0-00	1/4" NPT PIPE PLUG
799	1	W023-283	RETAINING RING
799	1	W58-47	BALL BEARING
799	1	W62-49-8	MOTOR SEAL
799	1	ZB-0558	SPACER
824	1	565-00407-ISR	RETAINING RING
824	2	L-0280-K	CHECK VALVE
824	1	MA-0558-1XS	RING SEALS
824	2	R-0921	ROLLER BEARING

Shaft End cover Small Parts Codes

Code	QTY	Part Number	Description
824	1	W0-00	1/4" NPT PIPE PLUG
824	1	W62-49-8	MOTOR SEAL
831	1	558-00474-BS	BEARING SPACER
831	2	L-0280-K	CHECK VALVE
831	1	MA-0558-1XS	RING SEALS
831	2	R-0921	ROLLER BEARING
831	1	W0-00	1/4" NPT PIPE PLUG
831	1	W023-283	RETAINING RING
831	1	W62-49-8	MOTOR SEAL
867	1	558-00474-BS	BEARING SPACER
867	2	L-0280-K	CHECK VALVE
867	1	MA-0558-1XS	RING SEALS
867	2	R-0921	ROLLER BEARING
867	1	W0-00	1/4" NPT PIPE PLUG
867	1	W023-283	RETAINING RING
867	1	W62-49-8	MOTOR SEAL
886	1	558-00474-BS	BEARING SPACER
886	2	L-0280-K	CHECK VALVE
886	1	MA-0558-1XS	RING SEALS
886	2	R-0921	ROLLER BEARING
886	1	W0-00	1/4" NPT PIPE PLUG
886	1	W023-283	RETAINING RING
886	1	W62-49-8	MOTOR SEAL
887	1	558-00474-BS	BEARING SPACER
887	2	L-0280-K	CHECK VALVE
887	1	MA-0558-1XS	RING SEALS
887	2	R-0921	ROLLER BEARING
887	1	W0-00	1/4" NPT PIPE PLUG
887	1	W023-283	RETAINING RING
887	1	W62-49-8	MOTOR SEAL
888	1	961-00504	SEAL REATINER FOR TYPE 2 MOTOR
888	1	K-2995-164	O-RING
888	2	L-0280-K	CHECK VALVE
888	1	MA-0558-1XS	RING SEALS

Shaft End cover Small Parts Codes

Code	QTY	Part Number	Description
888	2	R-0921	ROLLER BEARING
888	1	W0-00	1/4" NPT PIPE PLUG
888	1	W023-283	RETAINING RING
888	1	W62-49-8	MOTOR SEAL
890	1	558-00474-BS	SEAL RETAINER
890	2	L-0280-K	CHECK VALVE
890	1	MA-0558-1XS	RING SEAL
890	2	R-0921	BEARING
890	1	W0-00	PLUG
890	1	W023-283	RETAINING RING
890	1	W62-49-8	SEAL
899	1	558-00474-BS	BEARING SPACER
899	2	L-0280-K	CHECK VALVE
899	1	MA-0558-1XS	RING SEALS
899	2	R-0921	ROLLER BEARING
899	1	W0-00	1/4" NPT PIPE PLUG
899	1	W023-283	RETAINING RING
899	1	W62-49-8	MOTOR SEAL
ALL	1	MA-0558-1XS	RING SEAL
ALL	2	R-0921	ROLLER BEARING
C 1	1	ZB-0558	SEAL RETAINER
C14	1	ZD-0558	SEAL RETAINER
C62	1	226-01015	PUMP SEAL
C62	1	280-1772-186	MOTOR SEAL
C62	1	558-01017	BEARING SPACER
C62	1	W023-283	SNAP RING
C62	1	W58-47	BALL BEARING
C62	1	ZB-0558	SPACER

Code QTY Part Number Description

AD	1	592-00884	Both Bi-Rotation with BLANK Blank Inlet and Blank Outlet, Single
----	---	-----------	--

Port End Cover Codes

NPT

Code QTY Part Number Description

OF	1	592-00884-11	Both Bi-Rotation with NPT 1.25" Rear Port inlet and 1.25" Rear Port outlet, Single
OH	1	592-00884-11	Both Bi-Rotation with NPT 1.25" Rear Port inlet and 1.25" Rear Port outlet, Extended Studs
AA	1	592-00884-1	Both Bi-Rotation with NPT 1.5" Rear Port inlet and 1.5" Rear Port outlet, Single

Port End Cover Codes

ORB

Code QTY Part Number Description

NM	1	592-00884-67	Both Bi-Rotation with ORB 1.25" Rear Port inlet and 1.25" Rear Port outlet, Single
NO	1	592-00884-67	Both Bi-Rotation with ORB 1.25" Rear Port inlet and 1.25" Rear Port outlet, Extended Studs

Port End cover Small Parts Codes

Code	QTY	Part Number	Description
------	-----	-------------	-------------

Code	QTY	Part Number	Description
ZA15	1	577-00886-15	Bi-Rotation, 1.5" gear width BLANK ports: BLANK on the left and BLANK on the right, 2.25" wide gear housing
ZA17	1	577-00886-17	Bi-Rotation, 1.75" gear width BLANK ports: BLANK on the left and BLANK on the right, 2.5" wide gear housing
ZA20	1	577-00886-20	Bi-Rotation, 2" gear width BLANK ports: BLANK on the left and BLANK on the right, 2.75" wide gear housing
ZA22	1	577-00886-22	Bi-Rotation, 2.25" gear width BLANK ports: BLANK on the left and BLANK on the right, 3.00" wide gear housing
ZA25	1	577-00886-25	Bi-Rotation, 2.5" gear width BLANK ports: BLANK on the left and BLANK on the right, 3.25" wide gear housing
ZA27	1	577-00886-27	Bi-Rotation, 2.75" gear width BLANK ports: BLANK on the left and BLANK on the right, 3.5" wide gear housing

Gear Housing Codes

NPT

Code	QTY	Part Number	Description
XE15	1	577-00886-15-5	Bi-Rotation, 1.5" gear width NPT ports: 1" on the left and 1" on the right, 2.25" wide gear housing
XK17	1	577-00886-17-8	Bi-Rotation, 1.75" gear width NPT ports: 1.25" on the left and 1.25" on the right, 2.5" wide gear housing
XK20	1	577-00886-20-8	Bi-Rotation, 2" gear width NPT ports: 1.25" on the left and 1.25" on the right, 2.75" wide gear housing
XQ22	1	577-00886-22-13	Bi-Rotation, 2.25" gear width NPT ports: 1.5" on the left and 1.5" on the right, 3.0" wide gear housing
XK22	1	577-00886-22-8	Bi-Rotation, 2.25" gear width NPT ports: 1.25" on the left and 1.25" on the right, 3" wide gear housing
XQ25	1	577-00886-25-13	Bi-Rotation, 2.5" gear width NPT ports: 1.5" on the left and 1.5" on the right, 3.25" wide gear housing
XK25	1	577-00866-25-8	Bi-Rotation, 2.5" gear width NPT ports: 1.25" on the left and 1.25" on the right, 3.25" wide gear housing
XQ27	1	577-00886-27-13	Bi-Rotation, 2.75" gear width NPT ports: 1.5" on the left and 1.5" on the right, 3.5" wide gear housing

Code	QTY	Part Number	Description
ZE15	1	577-00886-15-64	Bi-Rotation, 1.5" gear width ORB ports: 1" on the left and 1" on the right, 2.25" wide gear housing
ZK17	1	577-00886-17-67	Bi-Rotation, 1.75" gear width ORB ports: 1.25" on the left and 1.25" on the right, 2.5" wide gear housing
ZK20	1	577-00886-20-67	Bi-Rotation, 2" gear width ORB ports: 1.25" on the left and 1.25" on the right, 2.75" wide gear housing
ZQ25	1	577-00886-25-70	Bi-Rotation, 2.5" gear width ORB ports: 1.5" on the left and 1.5" on the right, 3.25" wide gear housing
ZQ27	1	577-00886-27-70	Bi-Rotation, 2.75" gear width ORB ports: 1.5" on the left and 1.5" on the right, 3.5" wide gear housing

Gear Housing Small Parts Codes

Code	QTY	Part Number	Description
ZK	4	280-1971-032	DOWEL PINS
ZQ	4	280-1971-032	DOWEL PINS
XE	4	280-1971-032	DOWEL PINS
ZA	4	280-1971-032	DOWEL PINS
XQ	4	280-1971-032	DOWEL PINS
all	4	280-1971-032	DOWEL PINS
ZQ	1	TA-2995-244	SQUARE GASKET SEAL
ZK	1	TA-2995-244	SQUARE GASKET SEAL
ZA	1	TA-2995-244	SQUARE GASKET SEAL
XE	1	TA-2995-244	SQUARE GASKET SEAL
all	1	TA-2995-244	SQUARE GASKET SEAL
XQ	1	TA-2995-244	SQUARE GASKET SEAL
XQ	1	TA-2995-250	SQUARE GASKET SEAL
all	1	TA-2995-250	SQUARE GASKET SEAL
XE	1	TA-2995-250	SQUARE GASKET SEAL
ZA	1	TA-2995-250	SQUARE GASKET SEAL
ZK	1	TA-2995-250	SQUARE GASKET SEAL
ZQ	1	TA-2995-250	SQUARE GASKET SEAL
ZQ	2	X-0947-TC	THRUST PLATE
ZK	2	X-0947-TC	THRUST PLATE
ZA	2	X-0947-TC	THRUST PLATE
XE	2	X-0947-TC	THRUST PLATE
XQ	2	X-0947-TC	THRUST PLATE
all	2	X-0947-TC	THRUST PLATE

Gear Shaft Codes

Integral

Code QTY Part Number Description

87	1	ZS-0024L-1-30	SINGLE Gear Set With 3.00" Gear Width and SAE "BB" (1" Dia. 15 TOOTH) SPLINE with 1.250" Shaft Extension ,Used In SINGLE Section Units
87	1	ZS-0024L-1-27	SINGLE Gear Set With 2.75" Gear Width and SAE "BB" (1" Dia. 15 TOOTH) SPLINE with 1.250" Shaft Extension ,Used In SINGLE Section Units
87	1	ZS-0024L-1-25	SINGLE Gear Set With 2.5" Gear Width and SAE "BB" (1" Dia. 15 TOOTH) SPLINE with 1.250" Shaft Extension ,Used In SINGLE Section Units
87	1	ZS-0024L-1-20	SINGLE Gear Set With 2" Gear Width and SAE "BB" (1" Dia. 15 TOOTH) SPLINE with 1.250" Shaft Extension ,Used In SINGLE Section Units
77	1	ZS-0024L-2-15	SINGLE Gear Set With 1.5" Gear Width and SAE "BB" (1" Dia. 15 TOOTH) SPLINE with 1.937" Shaft Extension ,Used In SINGLE Section Units
54	1	UC-0024L-2-27	SINGLE Gear Set With 2.75" Gear Width and SAE "B" (7/8" Dia.- 13 TOOTH) SPLINE with 1.250" Shaft Extension ,Used In SINGLE Section Units
54	1	UC-0024L-2-25	SINGLE Gear Set With 2.5" Gear Width and SAE "B" (7/8" Dia.- 13 TOOTH) SPLINE with 1.250" Shaft Extension ,Used In SINGLE Section Units
54	1	UC-0024L-2-22	SINGLE Gear Set With 2.25" Gear Width and SAE "B" (7/8" Dia.- 13 TOOTH) SPLINE with 1.250" Shaft Extension ,Used In SINGLE Section Units
54	1	UC-0024L-2-20	SINGLE Gear Set With 2" Gear Width and SAE "B" (7/8" Dia.- 13 TOOTH) SPLINE with 1.250" Shaft Extension ,Used In SINGLE Section Units
54	1	UC-0024L-2-17	SINGLE Gear Set With 1.75" Gear Width and SAE "B" (7/8" Dia.- 13 TOOTH) SPLINE with 1.250" Shaft Extension ,Used In SINGLE Section Units
42	1	OC-0024L-2-17	SINGLE Gear Set With 1.75" Gear Width and SAE "C" (1-1/4" Dia.-14 TOOTH) SPLINE with 2.187" Shaft Extension ,Used In SINGLE Section Units
14	1	UC-0024L-1-25	SINGLE Gear Set With 2.5" Gear Width and SAE "B" (7/8" Dia.- 13 TOOTH) SPLINE with 1.625" Shaft Extension ,Used In SINGLE Section Units
14	1	UC-0024L-1-22	SINGLE Gear Set With 2.25" Gear Width and SAE "B" (7/8" Dia.- 13 TOOTH) SPLINE with 1.625" Shaft Extension ,Used In SINGLE Section Units
14	1	UC-0024L-1-20	SINGLE Gear Set With 2" Gear Width and SAE "B" (7/8" Dia.- 13 TOOTH) SPLINE with 1.625" Shaft Extension ,Used In SINGLE Section Units
14	1	UC-0024L-1-17	SINGLE Gear Set With 1.75" Gear Width and SAE "B" (7/8" Dia.- 13 TOOTH) SPLINE with 1.625" Shaft Extension ,Used In SINGLE Section Units
00	1	RC-0024L-1-25	SINGLE Gear Set With 2.5" Gear Width and SAE "C" (1-1/4" Dia. KEYED) KEYED with 2.187" Shaft Extension ,Used In SINGLE Section Units
87	1	ZS-0024L-3-17	MULTIPLE Gear Set With 1.75" Gear Width and SAE "BB" (1" Dia. 15 TOOTH) SPLINE with 1.250" Shaft Extension ,Used In MULTIPLE Section Units
77	1	ZS-0024L-4-25	MULTIPLE Gear Set With 2.5" Gear Width and SAE "BB" (1" Dia. 15 TOOTH) SPLINE with 1.937" Shaft Extension ,Used In MULTIPLE Section Units
77	1	ZS-0024L-4-22	MULTIPLE Gear Set With 2.25" Gear Width and SAE "BB" (1" Dia. 15 TOOTH) SPLINE with 1.937" Shaft Extension ,Used In MULTIPLE Section Units
77	1	ZS-0024L-4-20	MULTIPLE Gear Set With 2" Gear Width and SAE "BB" (1" Dia. 15 TOOTH) SPLINE with 1.937" Shaft Extension ,Used In MULTIPLE Section Units
77	1	ZS-0024L-4-17	MULTIPLE Gear Set With 1.75" Gear Width and SAE "BB" (1" Dia. 15 TOOTH) SPLINE with 1.937" Shaft Extension ,Used In MULTIPLE Section Units
6	1	OC-0024L-3-25	MULTIPLE Gear Set With 2.5" Gear Width and SAE "C" (1-1/4" Dia.-14 TOOTH) SPLINE with 2.187" Shaft Extension ,Used In MULTIPLE Section Units
6	1	OC-0024L-3-22	MULTIPLE Gear Set With 2.25" Gear Width and SAE "C" (1-1/4" Dia.-14 TOOTH) SPLINE with 2.187" Shaft Extension ,Used In MULTIPLE Section Units
6	1	OC-0024L-3-20	MULTIPLE Gear Set With 2" Gear Width and SAE "C" (1-1/4" Dia.-14 TOOTH) SPLINE with 2.187" Shaft Extension ,Used In MULTIPLE Section Units
6	1	OC-0024L-3-17	MULTIPLE Gear Set With 1.75" Gear Width and SAE "C" (1-1/4" Dia.-14 TOOTH) SPLINE with 2.187" Shaft Extension ,Used In MULTIPLE Section Units
42	1	OC-0024L-4-25	MULTIPLE Gear Set With 2.5" Gear Width and SAE "C" (1-1/4" Dia.-14 TOOTH) SPLINE with 2.187" Shaft Extension ,Used In MULTIPLE Section Units

Code QTY Part Number Description

42	1	OC-0024L-4-22	MULTIPLE Gear Set With 2.25" Gear Width and SAE "C" (1-1/4" Dia.-14 TOOTH) SPLINE with 2.187" Shaft Extension ,Used In MULTIPLE Section Units
42	1	OC-0024L-4-20	MULTIPLE Gear Set With 2" Gear Width and SAE "C" (1-1/4" Dia.-14 TOOTH) SPLINE with 2.187" Shaft Extension ,Used In MULTIPLE Section Units
32	1	SC-0024L-3-25	MULTIPLE Gear Set With 2.5" Gear Width and SAE "BB" (1" Dia. KEYED) KEYED with 1.937" Shaft Extension ,Used In MULTIPLE Section Units
32	1	SC-0024L-3-22	MULTIPLE Gear Set With 2.25" Gear Width and SAE "BB" (1" Dia. KEYED) KEYED with 1.937" Shaft Extension ,Used In MULTIPLE Section Units
32	1	SC-0024L-3-20	MULTIPLE Gear Set With 2" Gear Width and SAE "BB" (1" Dia. KEYED) KEYED with 1.937" Shaft Extension ,Used In MULTIPLE Section Units
32	1	SC-0024L-3-17	MULTIPLE Gear Set With 1.75" Gear Width and SAE "BB" (1" Dia. KEYED) KEYED with 1.937" Shaft Extension ,Used In MULTIPLE Section Units
00	1	RC-0024L-3-27	MULTIPLE Gear Set With 2.75" Gear Width and SAE "C" (1-1/4" Dia. KEYED) KEYED with 2.187" Shaft Extension ,Used In MULTIPLE Section Units
00	1	RC-0024L-3-22	MULTIPLE Gear Set With 2.25" Gear Width and SAE "C" (1-1/4" Dia. KEYED) KEYED with 2.187" Shaft Extension ,Used In MULTIPLE Section Units
00	1	RC-0024L-3-20	MULTIPLE Gear Set With 2" Gear Width and SAE "C" (1-1/4" Dia. KEYED) KEYED with 2.187" Shaft Extension ,Used In MULTIPLE Section Units
00	1	RC-0024L-3-17	MULTIPLE Gear Set With 1.75" Gear Width and SAE "C" (1-1/4" Dia. KEYED) KEYED with 2.187" Shaft Extension ,Used In MULTIPLE Section Units
87	1	ZS-0024L-3-25	MULTIPLE Gear Set With 1.5" Gear Width and SAE "BB" (1" Dia. KEYED) SPLINE with 1.937" Shaft Extension ,Used In Section Units
87	1	ZS-0024L-3-15	MULTIPLE Gear Set With 1.5" Gear Width and SAE "BB" (1" Dia. 15 TOOTH) SPLINE with 1.937" Shaft Extension ,Used In Section Units
6	1	OC-0024L-1-25	SINGLE Gear Set With 2.5" Gear Width and SAE "C" (1-1/4" Dia.-14 TOOTH) SPLINE with 2.187" Shaft Extension ,Used In Section Units
6	1	OC-0024L-1-22	SINGLE Gear Set With 2.25" Gear Width and SAE "C" (1-1/4" Dia.-14 TOOTH) SPLINE with 2.187" Shaft Extension ,Used In Section Units
6	1	OC-0024L-1-17	SINGLE Gear Set With 1.75" Gear Width and SAE "C" (1-1/4" Dia.-14 TOOTH) SPLINE with 2.187" Shaft Extension ,Used In Section Units
56	1	SC-0024L-4-20	MULTIPLE Gear Set With 2" Gear Width and SAE "BB" (1" Dia. KEYED) KEYED with 1.937" Shaft Extension ,Used In Section Units
00	1	RC-0024L-3-25	MULTIPLE Gear Set With 2.5" Gear Width and SAE "C" (1-1/4" Dia. KEYED) KEYED with 2.187" Shaft Extension ,Used In Section Units
00	1	RC-0024L-1-22	SINGLE Gear Set With 2.25" Gear Width and SAE "C" (1-1/4" Dia. KEYED) KEYED with 2.187" Shaft Extension ,Used In Section Units
00	1	RC-0024L-1-20	SINGLE Gear Set With 2" Gear Width and SAE "C" (1-1/4" Dia. KEYED) KEYED with 2.187" Shaft Extension ,Used In Section Units

Code QTY Part Number Description

27	1	LZ-0995L-27	MULTIPLE Gear Set with 2.75" Gear Width
25	1	LZ-0995L-25	MULTIPLE Gear Set with 2.5" Gear Width
22	1	LZ-0995L-22	MULTIPLE Gear Set with 2.25" Gear Width
20	1	LZ-0995L-20	MULTIPLE Gear Set with 2" Gear Width
17	1	LZ-0995L-17	MULTIPLE Gear Set with 1.75" Gear Width

Continental Shaft Codes

Code QTY Part Number Description

5	1	024C-D0264	1.40" DIN Shaft, DIN 5462, 8 Tooth, (8x32x36) SPLINE shaft with 1.250" Shaft Extension
C 1	1	ZA-0024	1.125" Diameter KEYED shaft with 2.375" Shaft Extension
C 5	1	024C-D0264	1.40" DIN Shaft, DIN 5462, 8 Tooth, (8x32x36) KEYED shaft with 2.165" Shaft Extension
C14	1	ZC-0024	SAE "B" (7/8"- 13 TOOTH) SPLINE shaft with 1.625" Shaft Extension
C62	1	202-0499-502	SAE "C" (1-1/4") KEYED shaft with 3.125" Shaft Extension

Drive Shaft Small Parts

Code	QTY	Part Number	Description	Type
------	-----	-------------	-------------	------