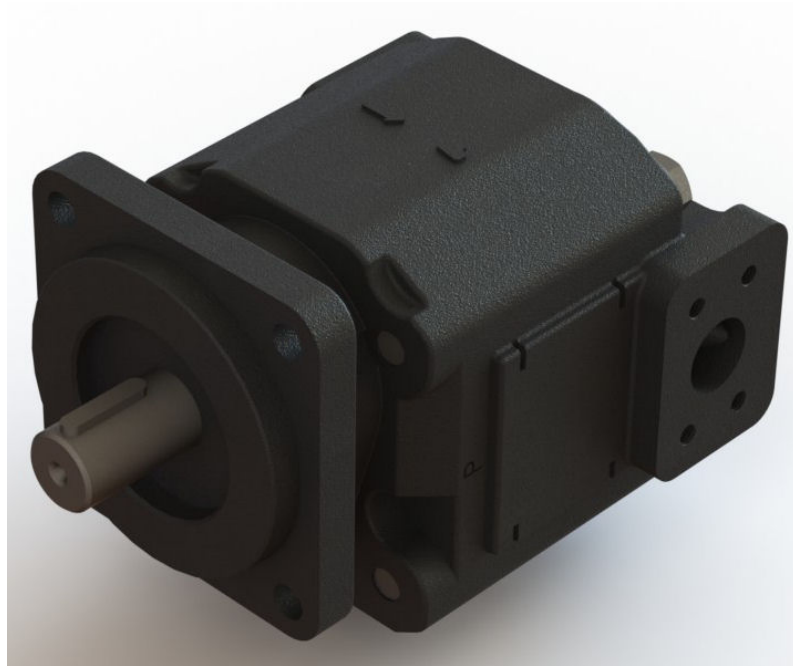


# Permco



360 Series Pumps Code Book

## Disclaimer

THROUGH THE USE OF THIS CATALOG ALL THE COMPONENT PARTS OF ANY PERMCO PUMP OR MOTOR CAN BE DETERMINED EXCLUDING FASTENERS.

THIS CODE BOOK IS FOR THE 360 SERIES PUMPS.

EACH MODEL SERIES IS DIVIDED IN THE FOLLOWING MANNER:

- I. SHAFT END COVERS FOLLOWED BY SHAFT END COVER SMALL PARTS.
- II. PORT END COVERS FOLLOWED BY PORT END COVER SMALL PARTS.
- III. GEAR HOUSINGS FOLLOWED BY:
  - A. GEAR HOUSING SMALL PARTS.
  - B. GEARS.
- IV. DRIVE SHAFTS OR GEAR/SHAFTS FOLLOWED BY DRIVE SHAFT SMALL PARTS.
- V. BEARING CARRIERS FOLLOWED BY BEARING CARRIER SMALL PARTS.
- VI. CONNECTING SHAFTS.

COPYRIGHT C NOVEMBER 2005 BY PERMCO, INC. ALL RIGHTS RESERVED. NO PART OF THIS BOOK MAY BE REPRODUCED, STORED IN A RETRIEVAL SYSTEM, OR TRANSMITTED IN ANY FORM OR BY ANY MEANS ELECTRONIC, MECHANICAL, PHOTOCOPYING, RECORDING, OR OTHERWISE WITHOUT PRIOR WRITTEN PERMISSION OF PERMCO, INC.

# How To

BELOW IS AN EXAMPLE OF HOW TO USE THIS CATALOG:

SINGLE ASSEMBLY CODE: P360A067DJZA20-00  
TANDEM ASSEMBLY CODE: P360B067AJZA20-00BCZA10-1

P DENOTES PUMP (M DENOTES MOTOR, PB NOTES PIGGYBACK OR TRANSITION)  
360 SERIES

A B OR C OR L MODEL TYPE (A-SINGLE B-TANDEM C-CONTINENTAL SHAFT  
AND I-EXTENDED STUDS)

067 SHAFT END COVER  
DJ PORT END COVER  
ZA20 GEAR HOUSING (FIRST)  
00 DRIVE SHAFT

---

BC BEARING CARRIER  
ZA10 GEAR HOUSING (SECOND)  
1 CONNECTING SHAFT

THE ROTATION OF ANY UNIT IS IDENTIFIED BY THE FIRST DIGIT OF THE SHAFT END COVER  
CODE  
(SEE INDIVIDUAL SERIES COVER PAGES). THE GEAR SIZE IS DENOTED BY THE TWO (2) DIGITS IN  
THE GEAR HOUSING CODE.

CODE. . . . . :	05	07	10	12	15	17	20	22	25
SIZE IN INCHES:	1/2	3/4	1	1-1/4	1-1/2	1-3/4	2	2-1/4	2-1/2

ROTATION IS VIEWED LOOKING AT SHAFT END (SHAFT ON TOP.)  
AN ASTERISK (\*) DENOTES EITHER OBSOLETE OR SPECIAL. PLEASE CONSULT FACTORY AS THEY  
MAY BE REPLACED BY OTHER STANDARD ITEMS.

# Abbreviations

## Shaft End Cover Description

FT MT	FOOT MOUNT
G F TOP	GREASE FITTING ON TOP (OTHERS ON BOTTOM)
PAD MT	PAD MOUNT
PB	PIGGYBACK PUMP
PD	PILOT DIAMETER
PX	PILOT EXTENSION
RD FLG	ROUND FLANGE
W/MTG SLT	WITH MOUNTING SLOT
WD	WITH DRAIN
WD2	WITH DRAIN AT 2 OCLOCK POSITION
WD8	WITH DRAIN AT 8 OCLOCK POSITION
WD12	WITH DRAIN AT 12 OCLOCK POSITION
W2D	WITH 2 DRAINS

## Port End Cover Description

OS	PORTS ARE OUT THE SIDE
PB	PIGGYBACK PUMP
XSD	EXTENDED STUDS

## Shaft Description

T	TOOTH
PB	PIGGYBACK PUMP
W/THD END	WITH THREADED END

## Porting Descriptions

ORB	STRAIGHT THREAD. PORT SIZE REFERS TO O.D. OF TUBE.
SF	SPLIT FLANGE PORTS. PORT SIZE REFERS TO FLANGE HOLE DIAMETER.
T	INTERNAL CONNECTIONS TO FRONT & BACK SECTION.
B	CONNECTION TO BACK SECTION.
F	CONNECTION TO FRONT SECTION.

## Identification

STUD HOLES - 4 AT 5/8 DIAMETER  
STUD DIA. - 5/8 IN.  
ONE-PIECE DRIVE SHAFT AND GEAR (INTEGRAL)  
HOUSING HEIGHT - 7.05 INCHES  
HOUSING WIDTH - GEAR SIZE + 1/2 INCH  
BOLT TORQUE - 250 FT-LBS

## Gear Widths available

1/2, 3/4, 1, 1-1/4, 1-1/2, 1-3/4, 2, 2-1/4 AND 2-1/2 INCHES

## Shaft End Covers

THE TYPE OF SHAFT END COVER IS DETERMINED BY THE ENTIRE 3 DIGIT DESIGNATION.  
THIS SERIES IS AVAILABLE BOTH WITH AND WITHOUT OUTBOARD BEARINGS.  
THE FIRST DIGIT OF THE SHAFT END COVER CODE DESIGNATES PUMP/MOTOR ROTATION.

ALL CODES BEGINNING WITH	CW	CCW	DBL	PUMP	MOTOR	BEARING
0	XX			XX		
1		XX		XX		
3	XX			XX		XX
4		XX		XX		XX
7			XX		XX	XX
8			XX		XX	

# Accessories

Plastic Plugs	
Port Size	Part No.
NPT & BSPP	
1/8"	#8
1/4"	#11
3/8"	#17
1/2"	#23
3/4"	#30
1"	#42
1-1/4"	#53
1-1/2"	#57
2"	#68
2-1/2"	#78
SAE ORB	
1/2"	#23
3/8"	#17
5/8"	#27
3/4"	#35
7/8"	#42
1"	#44
1-1/4"	#53
1-1/2"	#57
SF & Metric SF	
1/2"	#12
3/4"	B-831-213
1"	B-831-214
1-1/4"	B-831-215
1-1/2"	B-831-216
2"	B-831-217
2-1/2"	B-831-218

Fasteners for Single Units			
Gear Size	Part No.	Bolt Length	Qty.
1/2"	W1-58	4-1/2"	4
3/4"	W1-58	4-1/2"	4
1"	W1-14	5"	4
1-1/4"	W1-14	5"	4
1-1/2"	W1-78	5-1/2"	4
1-3/4"	W1-78	5-1/2"	4
2"	W1-65	6"	4
2-1/4"	W1-65	6"	4
2-1/2"	W1-89	6-1/2"	4
Washer Part No.		W033-2	4

Shaft Protectors	
SP-1000-1	.656"Dia
SP-1000-2	.587"Dia
SP-1000-3	1"Dia
SP-1000-4	1-1/4" Splined & 1-1/8"Dia
SP-1000-5	1-1/4" Dia Keyed
SP-1000-6	1/2"Dia
SP-1000-7	5/8"Dia
SP-1000-8	3/4"Dia
SP-1000-8	7/8"Dia

Fasteners for Multi-Section Units		
Add Total Gear Width to the length provided below to obtain stud length		
	Flush	Extended
Dual Section	9.0	11.0
Triple Section	13.5	15.5
Quad Section	18.0	20.0
Washer Part No.	W033-2	Qty of 4
Nut Part No.	W3-65	Qty of 4

Available Stud Lengths	
Stud Part No.	Description
ZD-0391-08	5/8-11 x 8"
ZD-0391-875	5/8-11 x 8.75"
ZD-0391-09	5/8-11 x 9"
ZD-0391-095	5/8-11 x 9.5"
ZD-0391-10	5/8-11 x 10"
ZD-0391-105	5/8-11 x 10.5"
ZD-0391-112	5/8-11 x 11.25"
ZD-0391-12	5/8-11 x 12"
ZD-0391-125	5/8-11 x 12.5"
ZD-0391-132	5/8-11 x 13.25"
ZD-0391-14	5/8-11 x 14"
ZD-0391-142	5/8-11 x 14.25"
ZD-0391-16	5/8-11 x 16"
ZD-0391-18	5/8-11 x 18"
ZD-0391-20	5/8-11 x 20"
ZD-0391-22	5/8-11 x 22"
ZD-0391-24	5/8-11 x 24"
ZD-0391-26	5/8-11 x 26"
ZD-0391-28	5/8-11 x 28"
ZD-0391-30	5/8-11 x 30"
ZD-0391-36	5/8-11 x 36"
ZD-0391-40	5/8-11 x 40"

## Shaft End cover Codes

Code	QTY	Part Number	Description
031	1	574-01389	CW 360 Pump Pump Type I SEC with SAE "B" ( 4" Diameter ) 4 Bolts No Outboard Bearing
067	1	574-01382	CW 360 Pump Pump Type I SEC with SAE "C" ( 5" Diameter ) 4 Bolts No Outboard Bearing
079	1	574-01435	CW 360 Pump Pump Type I SEC with SAE "D" ( 6" Diameter ) 4 Bolts No Outboard Bearing
086	1	574-01607	CW 360 Pump Pump Type I SEC with SAE "B" ( 4" Diameter ) 2 Bolts No Outboard Bearing
087	1	574-01605	CW 360 Pump Pump Type I SEC with SAE "C" ( 5" Diameter ) 2 Bolts No Outboard Bearing
131	1	574-01389	CCW 360 Pump Pump Type I SEC with SAE "B" ( 4" Diameter ) 4 Bolts No Outboard Bearing
167	1	574-01382	CCW 360 Pump Pump Type I SEC with SAE "C" ( 5" Diameter ) 4 Bolts No Outboard Bearing
179	1	574-01435	CCW 360 Pump Pump Type I SEC with SAE "D" ( 6" Diameter ) 4 Bolts No Outboard Bearing
186	1	574-01607	CCW 360 Pump Pump Type I SEC with SAE "B" ( 4" Diameter ) 2 Bolts No Outboard Bearing
187	1	574-01605	CCW 360 Pump Pump Type I SEC with SAE "C" ( 5" Diameter ) 2 Bolts No Outboard Bearing
331	1	574-01389	CW 360 Pump Pump Type I SEC with SAE "B" ( 4" Diameter ) 4 Bolts With Outboard Bearing
367	1	574-01382	CW 360 Pump Pump Type I SEC with SAE "C" ( 5" Diameter ) 4 Bolts With Outboard Bearing
379	1	574-01435	CW 360 Pump Pump Type I SEC with SAE "D" ( 6" Diameter ) 4 Bolts With Outboard Bearing
386	1	574-01607	CW 360 Pump Pump Type I SEC with SAE "B" ( 4" Diameter ) 2 Bolts With Outboard Bearing
387	1	574-01605	CW 360 Pump Pump Type I SEC with SAE "C" ( 5" Diameter ) 2 Bolts With Outboard Bearing
431	1	574-01389	CCW 360 Pump Pump Type I SEC with SAE "B" ( 4" Diameter ) 4 Bolts With Outboard Bearing
467	1	574-01382	CCW 360 Pump Pump Type I SEC with SAE "C" ( 5" Diameter ) 4 Bolts With Outboard Bearing
479	1	574-01435	CCW 360 Pump Pump Type I SEC with SAE "D" ( 6" Diameter ) 4 Bolts With Outboard Bearing
486	1	574-01607	CCW 360 Pump Pump Type I SEC with SAE "B" ( 4" Diameter ) 2 Bolts With Outboard Bearing
487	1	574-01605	CCW 360 Pump Pump Type I SEC with SAE "C" ( 5" Diameter ) 2 Bolts With Outboard Bearing

## Shaft End cover Small Parts Codes

Code	QTY	Part Number	Description
	1	565-01194	1/4" ORB, HOLLOW HEX PLUG
	1	565-01194	1/4" ORB, HOLLOW HEX PLUG
	1	565-01194	1/4" ORB, HOLLOW HEX PLUG
	2	921-00427-P	197 HIGH PRESSURE BUSHING
	2	921-00647-P	257 HIGH PRESSURE BUSHING
	2	921-01380	360 HIGH PRESSURE BUSHING
	2	921-01380	360 HIGH PRESSURE BUSHING
	2	921-01380	360 HIGH PRESSURE BUSHING
	2	921-01380	360 HIGH PRESSURE BUSHING
	1	W62-26-17	SHAFT SEAL
	1	W62-26-17	SHAFT SEAL
	1	W62-26-17	SHAFT SEAL
	1	W62-26-17	SHAFT SEAL
	2	921-00427-P	197HIGH PRESSURE BUSHING
	2	921-00647-P	257 HIGH PRESSURE BUSHING
	2	921-01108	124 HIGH PRESSURE BUSHING
	2	921-01108	124 HIGH PRESSURE BUSHING
	2	921-01380	360 HIGH PRESSURE BUSHING
	2	921-01380	360 HIGH PRESSURE BUSHING
	2	921-01380	360 HIGH PRESSURE BUSHING
	2	921-01380	360 HIGH PRESSURE BUSHING
	2	921-01380	360 HIGH PRESSURE BUSHING
	2	921-01380	360 HIGH PRESSURE BUSHING
031	2	921-01380	360 BUSHING
031	1	W62-26-10	DOUBLE LIP SHAFT SEAL
067	2	921-01380	360 BUSHING
067	1	W62-26-10	DOUBLE LIP SHAFT SEAL
079	2	921-01380	360 BUSHING
079	1	W62-26-10	DOUBLE LIP SHAFT SEAL
086	2	921-01380	360 BUSHING
086	1	W62-26-10	DOUBLE LIP SHAFT SEAL
087	2	921-01380	360 BUSHING
087	1	W62-26-10	DOUBLE LIP SHAFT SEAL
131	2	921-01380	360 BUSHING
131	1	W62-26-10	DOUBLE LIP SHAFT SEAL
167	2	921-01380	360 BUSHING
167	1	W62-26-10	DOUBLE LIP SHAFT SEAL



## Shaft End cover Small Parts Codes

<b>Code</b>	<b>QTY</b>	<b>Part Number</b>	<b>Description</b>
179	2	921-01380	360 BUSHING
179	1	W62-26-10	DOUBLE LIP SHAFT SEAL
186	2	921-01380	360 BUSHING
186	1	W62-26-10	DOUBLE LIP SHAFT SEAL
187	2	921-01380	360 BUSHING
187	1	W62-26-10	DOUBLE LIP SHAFT SEAL
331	2	921-01380	360 BUSHING
331	1	W58-48	BALL BEARING
331	1	W62-26-10	DOUBLE LIP SHAFT SEAL
331	1	W85-315	SNAP RING
367	2	921-01380	360 BUSHING
367	1	W58-48	BALL BEARING
367	1	W62-26-10	DOUBLE LIP SHAFT SEAL
367	1	W85-315	SNAP RING
379	2	921-01380	360 BUSHING
379	1	W58-48	BALL BEARING
379	1	W62-26-10	DOUBLE LIP SHAFT SEAL
379	1	W85-315	SNAP RING
386	2	921-01380	360 BUSHING
386	1	W58-48	BALL BEARING
386	1	W62-26-10	DOUBLE LIP SHAFT SEAL
386	1	W85-315	SNAP RING
387	2	921-01380	360 BUSHING
387	1	W58-48	BALL BEARING
387	1	W62-26-10	DOUBLE LIP SHAFT SEAL
387	1	W85-315	SNAP RING
431	2	921-01380	360 BUSHING
431	1	W58-48	BALL BEARING
431	1	W62-26-10	DOUBLE LIP SHAFT SEAL
431	1	W85-315	SNAP RING
467	2	921-01380	360 BUSHING
467	1	W58-48	BALL BEARING
467	1	W62-26-10	DOUBLE LIP SHAFT SEAL
467	1	W85-315	SNAP RING
479	2	921-01380	360 BUSHING
479	1	W58-48	BALL BEARING
479	1	W62-26-10	DOUBLE LIP SHAFT SEAL

## Shaft End cover Small Parts Codes

Code	QTY	Part Number	Description
479	1	W85-315	SNAP RING
486	2	921-01380	360 BUSHING
486	1	W58-48	BALL BEARING
486	1	W62-26-10	DOUBLE LIP SHAFT SEAL
486	1	W85-315	SNAP RING
487	2	921-01380	360 BUSHING
487	1	W58-48	BALL BEARING
487	1	W62-26-10	DOUBLE LIP SHAFT SEAL
487	1	W85-315	SNAP RING
ALL	4	921-01380	360 HIGH PRESSURE BUSHING
ALL	2	921-01380	360 BUSHING
B	4	921-01380	360 HIGH PRESSURE BUSHING
C	4	921-01380	360 HIGH PRESSURE BUSHING

**For tell-tale applications a "D" must follow the P360\_\_\_\_.**  
**Shaft end cover must be noted to have machining done for tell-tale drain.**  
**Extra small parts needed for tell-tale unit.**

QTY	Part Number	Description
1	961-01539	360 SEAL RETAINER "TELL-TALE"
1	W62-26-10	SEAL FOR "TELL-TALE"
1	W85-315	7500/360 SNAP RIN
1	W0-19	PIPE PLUG/SOC HD 1/8-27 NPT
1	K-2995-109	RETAINER QUAD-RING

## Code QTY Part Number Description

HA	1	592-01390	Pump CCW with BLANK Blank Inlet and Blank Outlet
AH	1	592-01390	Pump CW with BLANK Blank Inlet and Blank Outlet

## Code QTY Part Number Description

QA	1	592-01383-2426	Pump CCW with BSPP 1" Side Port On The Right inlet and BLANK On The Left outlet
SE	1	592-01383-2427	Pump CCW with BSPP 1" Side Port On The Right inlet and 1" Side Port On The Left outlet
QE	1	592-01383-2432	Pump CCW with BSPP 1.25" Side Port On The Right inlet and 1.25" Side Port On The Left outlet
RE	1	592-01383-2477	Pump CCW with BSPP 1.25" Side Port On The Right inlet and 1" Side Port On The Left outlet
PA	1	592-01383-2431	Pump CCW with BSPP 1.25" Side Port On The Right inlet and BLANK On The Left outlet
ME	1	592-01383-2481	Pump CCW with BSPP 1.5" Side Port On The Right inlet and 1.25" Side Port On The Left outlet
OA	1	592-01383-2436	Pump CCW with BSPP 1.5" Side Port On The Right inlet and BLANK On The Left outlet
OE	1	592-01383-2478	Pump CCW with BSPP 1.5" Side Port On The Right inlet and 1" Side Port On The Left outlet
SA	1	592-01383-2480	Pump CCW with BSPP BLANK On The Right inlet and 1.25" Side Port On The Left outlet
TA	1	592-01383-2476	Pump CCW with BSPP BLANK On The Right inlet and 1" Side Port On The Left outlet
AQ	1	592-01383-2426	Pump CW with BSPP 1" Side Port On The Left inlet and BLANK On The Right outlet
ES	1	592-01383-2427	Pump CW with BSPP 1" Side Port On The Left inlet and 1" Side Port On The Right outlet
AP	1	592-01383-2431	Pump CW with BSPP 1.25" Side Port On The Left inlet and BLANK On The Right outlet
EQ	1	592-01383-2432	Pump CW with BSPP 1.25" Side Port On The Left inlet and 1.25" Side Port On The Right outlet
ER	1	592-01383-2477	Pump CW with BSPP 1.25" Side Port On The Left inlet and 1" Side Port On The Right outlet
EM	1	592-01383-2481	Pump CW with BSPP 1.5" Side Port On The Left inlet and 1.25" Side Port On The Right outlet
EO	1	592-01383-2478	Pump CW with BSPP 1.5" Side Port On The Left inlet and 1" Side Port On The Right outlet
AO	1	592-01383-2436	Pump CW with BSPP 1.5" Side Port On The Left inlet and BLANK On The Right outlet
AS	1	592-01383-2480	Pump CW with BSPP BLANK On The Left inlet and 1.25" Side Port On The Right outlet
AT	1	592-01383-2476	Pump CW with BSPP BLANK On The Left inlet and 1" Side Port On The Right outlet

## Code QTY Part Number Description

YD	1	592-01383-2527	Pump CCW with MSF 1" Side Port On The Right inlet and 1" Side Port On The Left outlet
SN	1	592-01383-2526	Pump CCW with MSF 1" Side Port On The Right inlet and BLANK On The Left outlet
RN	1	592-01383-2531	Pump CCW with MSF 1.25" Side Port On The Right inlet and BLANK On The Left outlet
XD	1	592-01383-2577	Pump CCW with MSF 1.25" Side Port On The Right inlet and 1" Side Port On The Left outlet
WD	1	592-01383-2532	Pump CCW with MSF 1.25" Side Port On The Right inlet and 1.25" Side Port On The Left outlet
VD	1	592-01383-2578	Pump CCW with MSF 1.5" Side Port On The Right inlet and 1" Side Port On The Left outlet
QN	1	592-01383-2536	Pump CCW with MSF 1.5" Side Port On The Right inlet and BLANK On The Left outlet
TD	1	592-01383-2537	Pump CCW with MSF 1.5" Side Port On The Right inlet and 1.5" Side Port On The Left outlet
UD	1	592-01383-2581	Pump CCW with MSF 1.5" Side Port On The Right inlet and 1.25" Side Port On The Left outlet
RD	1	592-01383-2582	Pump CCW with MSF 2" Side Port On The Right inlet and 1.25" Side Port On The Left outlet
SD	1	592-01383-2579	Pump CCW with MSF 2" Side Port On The Right inlet and 1" Side Port On The Left outlet
ON	1	592-01383-2540	Pump CCW with MSF 2" Side Port On The Right inlet and BLANK On The Left outlet
QD	1	592-01383-2585	Pump CCW with MSF 2" Side Port On The Right inlet and 1.5" Side Port On The Left outlet
UN	1	592-01383-2584	Pump CCW with MSF BLANK On The Right inlet and 1.5" Side Port On The Left outlet
VN	1	592-01383-2580	Pump CCW with MSF BLANK On The Right inlet and 1.25" Side Port On The Left outlet
WN	1	592-01383-2576	Pump CCW with MSF BLANK On The Right inlet and 1" Side Port On The Left outlet
NS	1	592-01383-2526	Pump CW with MSF 1" Side Port On The Left inlet and BLANK On The Right outlet
DY	1	592-01383-2527	Pump CW with MSF 1" Side Port On The Left inlet and 1" Side Port On The Right outlet
DW	1	592-01383-2532	Pump CW with MSF 1.25" Side Port On The Left inlet and 1.25" Side Port On The Right outlet
DX	1	592-01383-2577	Pump CW with MSF 1.25" Side Port On The Left inlet and 1" Side Port On The Right outlet
NR	1	592-01383-2531	Pump CW with MSF 1.25" Side Port On The Left inlet and BLANK On The Right outlet
DT	1	592-01383-2537	Pump CW with MSF 1.5" Side Port On The Left inlet and 1.5" Side Port On The Right outlet
DU	1	592-01383-2581	Pump CW with MSF 1.5" Side Port On The Left inlet and 1.25" Side Port On The Right outlet
DV	1	592-01383-2578	Pump CW with MSF 1.5" Side Port On The Left inlet and 1" Side Port On The Right outlet
NQ	1	592-01383-2536	Pump CW with MSF 1.5" Side Port On The Left inlet and BLANK On The Right outlet
NO	1	592-01383-2540	Pump CW with MSF 2" Side Port On The Left inlet and BLANK On The Right outlet
DQ	1	592-01383-2585	Pump CW with MSF 2" Side Port On The Left inlet and 1.5" Side Port On The Right outlet
DR	1	592-01383-2582	Pump CW with MSF 2" Side Port On The Left inlet and 1.25" Side Port On The Right outlet
DS	1	592-01383-2579	Pump CW with MSF 2" Side Port On The Left inlet and 1" Side Port On The Right outlet
NU	1	592-01383-2584	Pump CW with MSF BLANK On The Left inlet and 1.5" Side Port On The Right outlet
NV	1	592-01383-2580	Pump CW with MSF BLANK On The Left inlet and 1.25" Side Port On The Right outlet
NW	1	592-01383-2576	Pump CW with MSF BLANK On The Left inlet and 1" Side Port On The Right outlet

## Code QTY Part Number Description

IA	1	592-01383-2326	Pump CCW with ORB 1" Side Port On The Right inlet and BLANK On The Left outlet
KE	1	592-01383-2327	Pump CCW with ORB 1" Side Port On The Right inlet and 1" Side Port On The Left outlet
IE	1	592-01383-2377	Pump CCW with ORB 1.25" Side Port On The Right inlet and 1" Side Port On The Left outlet
FA	1	592-01383-2331	Pump CCW with ORB 1.25" Side Port On The Right inlet and BLANK On The Left outlet
FE	1	592-01383-2332	Pump CCW with ORB 1.25" Side Port On The Right inlet and 1.25" Side Port On The Left outlet
AE	1	592-01383-2381	Pump CCW with ORB 1.5" Side Port On The Right inlet and 1.25" Side Port On The Left outlet
BA	1	592-01383-2336	Pump CCW with ORB 1.5" Side Port On The Right inlet and BLANK On The Left outlet
BE	1	592-01383-2378	Pump CCW with ORB 1.5" Side Port On The Right inlet and 1" Side Port On The Left outlet
KA	1	592-01563-2380	Pump CCW with ORB BLANK On The Right inlet and 1.25" Side Port On The Left outlet
MA	1	592-01383-2376	Pump CCW with ORB BLANK On The Right inlet and 1" Side Port On The Left outlet
EK	1	592-01383-2327	Pump CW with ORB 1" Side Port On The Left inlet and 1" Side Port On The Right outlet
AI	1	592-01383-2326	Pump CW with ORB 1" Side Port On The Left inlet and BLANK On The Right outlet
AF	1	592-01383-2331	Pump CW with ORB 1.25" Side Port On The Left inlet and BLANK On The Right outlet
EF	1	592-01383-2332	Pump CW with ORB 1.25" Side Port On The Left inlet and 1.25" Side Port On The Right outlet
EI	1	592-01383-2377	Pump CW with ORB 1.25" Side Port On The Left inlet and 1" Side Port On The Right outlet
AB	1	592-01383-2336	Pump CW with ORB 1.5" Side Port On The Left inlet and BLANK On The Right outlet
EA	1	592-01383-2381	Pump CW with ORB 1.5" Side Port On The Left inlet and 1.25" Side Port On The Right outlet
EB	1	592-01383-2378	Pump CW with ORB 1.5" Side Port On The Left inlet and 1" Side Port On The Right outlet
AK	1	592-01383-2380	Pump CW with ORB BLANK On The Left inlet and 1.25" Side Port On The Right outlet
AM	1	592-01383-2376	Pump CW with ORB BLANK On The Left inlet and 1" Side Port On The Right outlet

## Code QTY Part Number Description

MD	1	592-01383-2227	Pump CCW with SF 1" Side Port On The Right inlet and 1" Side Port On The Left outlet
IN	1	592-01383-2226	Pump CCW with SF 1" Side Port On The Right inlet and BLANK On The Left outlet
FN	1	592-01383-2231	Pump CCW with SF 1.25" Side Port On The Right inlet and BLANK On The Left outlet
KD	1	592-01383-2232	Pump CCW with SF 1.25" Side Port On The Right inlet and 1.25" Side Port On The Left outlet
LD	1	592-01383-2277	Pump CCW with SF 1.25" Side Port On The Right inlet and 1" Side Port On The Left outlet
GD	1	592-01383-2237	Pump CCW with SF 1.5" Side Port On The Right inlet and 1.5" Side Port On The Left outlet
ID	1	592-01383-2281	Pump CCW with SF 1.5" Side Port On The Right inlet and 1.25" Side Port On The Left outlet
JD	1	592-01383-2278	Pump CCW with SF 1.5" Side Port On The Right inlet and 1" Side Port On The Left outlet
EN	1	592-01383-2236	Pump CCW with SF 1.5" Side Port On The Right inlet and BLANK On The Left outlet
FD	1	592-01383-2279	Pump CCW with SF 2" Side Port On The Right inlet and 1" Side Port On The Left outlet
BD	1	592-01383-2285	Pump CCW with SF 2" Side Port On The Right inlet and 1.5" Side Port On The Left outlet
DN	1	592-01383-2240	Pump CCW with SF 2" Side Port On The Right inlet and BLANK On The Left outlet
ED	1	592-01383-2282	Pump CCW with SF 2" Side Port On The Right inlet and 1.25" Side Port On The Left outlet
LN	1	592-01383-2280	Pump CCW with SF BLANK On The Right inlet and 1.25" Side Port On The Left outlet
KN	1	592-01383-2284	Pump CCW with SF BLANK On The Right inlet and 1.5" Side Port On The Left outlet
MN	1	592-01383-2276	Pump CCW with SF BLANK On The Right inlet and 1" Side Port On The Left outlet
DM	1	592-01383-2227	Pump CW with SF 1" Side Port On The Left inlet and 1" Side Port On The Right outlet
NI	1	592-01383-2226	Pump CW with SF 1" Side Port On The Left inlet and BLANK On The Right outlet
DK	1	592-01383-2232	Pump CW with SF 1.25" Side Port On The Left inlet and 1.25" Side Port On The Right outlet
DL	1	592-01383-2277	Pump CW with SF 1.25" Side Port On The Left inlet and 1" Side Port On The Right outlet
NF	1	592-01383-2231	Pump CW with SF 1.25" Side Port On The Left inlet and BLANK On The Right outlet
DG	1	592-01383-2237	Pump CW with SF 1.5" Side Port On The Left inlet and 1.5" Side Port On The Right outlet
DI	1	592-01383-2281	Pump CW with SF 1.5" Side Port On The Left inlet and 1.25" Side Port On The Right outlet
DJ	1	592-01383-2278	Pump CW with SF 1.5" Side Port On The Left inlet and 1" Side Port On The Right outlet
NE	1	592-01383-2236	Pump CW with SF 1.5" Side Port On The Left inlet and BLANK On The Right outlet
ND	1	592-01383-2240	Pump CW with SF 2" Side Port On The Left inlet and BLANK On The Right outlet
DB	1	592-01383-2285	Pump CW with SF 2" Side Port On The Left inlet and 1.5" Side Port On The Right outlet
DE	1	592-01383-2282	Pump CW with SF 2" Side Port On The Left inlet and 1.25" Side Port On The Right outlet
DF	1	592-01383-2279	Pump CW with SF 2" Side Port On The Left inlet and 1" Side Port On The Right outlet
NK	1	592-01383-2284	Pump CW with SF BLANK On The Left inlet and 1.5" Side Port On The Right outlet
NL	1	592-01383-2280	Pump CW with SF BLANK On The Left inlet and 1.25" Side Port On The Right outlet
NM	1	592-01383-2276	Pump CW with SF BLANK On The Left inlet and 1" Side Port On The Right outlet

# Port End cover Small Parts Codes

Code	QTY	Part Number	Description
------	-----	-------------	-------------



## Transition Port End cover Codes

### Code QTY Part Number Description

1	592C-H0003	360/197	TRANSITION COVER	CW
1	022C-H0001	360/197	TRANSITION CONNECTING SHAFT	
1	592C-H0005	360/257	TRANSITION COVER	CW
1	022C-H0002	360/257	TRANSITION CONNECTING SHAFT	
1	592-01520-1	360/124	TRANSITION COVER	CCW
1	022-01521	360/124	TRANSITION CONNECTING SHAFT	
1	592C-H0004	360/197	TRANSITION COVER	CCW
1	022C-H0001	360/197	TRANSITION CONNECTING SHAFT	
1	592C-H00013	360/257	TRANSITION COVER	CCW
1	022C-H0002	360/257	TRANSITION CONNECTING SHAFT	
1	592-01520-0	360/124	TRANSITION COVER	CW
1	022-01521	360/124	TRANSITION CONNECTING SHAFT	

## Add-A-Pump Port End cover Codes

### Code QTY Part Number Description

1	022-01439		ADD-A-PUMP CONNECTING SHAFT,	SAE "A"
1	565-01191		1/4" ORB, HOLLOW HEX PLUG	
1	022-01438		ADD-A-PUMP CONNECTING SHAFT,	SAE "B"
1	592-01437-0-2A		ADD-A-PUMP PORT END COVER,	SAE "A"
1	921-01281		BALL BEARING	
1	565-01282		RETAINING RING	
1	022-01439		ADD-A-PUMP CONNECTING SHAFT,	SAE "A"
1	592-01437-0-2B		ADD-A-PUMP PORT END COVER,	SAE "B"
1	921-01281		BALL BEARING	
1	565-01282		RETAINING RING	
1	022-01438		ADD-A-PUMP CONNECTING SHAFT,	SAE "B"
1	592-01437-1-2A		ADD-A-PUMP PORT END COVER,	SAE "A"
1	921-01281		BALL BEARING	
1	565-01282		RETAINING RING	
1	592-01437-1-2B		ADD-A-PUMP PORT END COVER,	SAE "B"
1	921-01281		BALL BEARING	
1	565-01282		RETAINING RING	

## Gear Housing Codes

<b>Code</b>	<b>QTY</b>	<b>Part Number</b>	<b>Description</b>
ZA05	1	577-01381-05	1.00" wide Pump gear housing for 0.5" gear
ZA07	1	577-01381-07	1.25" wide Pump gear housing for 0.75" gear
ZA10	1	577-01381-10	1.50" wide Pump gear housing for 1" gear
ZA12	1	577-01381-12	1.75" wide Pump gear housing for 1.25" gear
ZA14	1	577-01381-14	1.940" wide Pump gear housing for 1.437" gear
ZA15	1	577-01381-15	2.00" wide Pump gear housing for 1.5" gear
ZA18	1	577-01381-18	2.375" wide Pump gear housing for 1.875" gear
ZA20	1	577-01381-20	2.50" wide Pump gear housing for 2" gear
ZA21	1	577-01381-21	2.625" wide Pump gear housing for 2.125" gear
ZA22	1	577-01381-22	2.75" wide Pump gear housing for 2.25" gear
ZA25	1	577-01381-25	3.00" wide Pump gear housing for 2.5" gear
ZA17	1	577-01381-17	2.25" wide Both gear housing for 1.75" gear

## Gear Housing Small Parts Codes

<b>Code</b>	<b>QTY</b>	<b>Part Number</b>	<b>Description</b>
ALL	8	280-1971-062	360 HOLLOW DOWEL PIN
ALL	2	947-01377	360 UNI-ROTATIONAL THRUST PLATE
ALL	2	947-01378	360 THRUST PLATE SEAL RING
ALL	2	947-01379	360 THRUST PLATE BACK-UP RING
DV	2	947-01602	360 DRY VALVE THRUST PLATES
ALL	2	TA-2995-250	360 HOUSING GASKET SEAL

## Code QTY Part Number Description

Code	QTY	Part Number	Description
TPR	1	024-01625-25	Gear Set With 2.5" Gear Width and N/A TAPERED ,Used In SINGLE Section Units
87	1	024-01466-25	MULTIPLE Gear Set With 2.5" Gear Width and SAE "BB" (1" Dia. 15 TOOTH) SPLINE with 1.937" ,Used In MULTIPLE Section Units
87	1	024-01466-22	MULTIPLE Gear Set With 2.25" Gear Width and SAE "BB" (1" Dia. 15 TOOTH) SPLINE with 1.937" ,Used In MULTIPLE Section Units
87	1	024-01466-20	MULTIPLE Gear Set With 2" Gear Width and SAE "BB" (1" Dia. 15 TOOTH) SPLINE with 1.937" ,Used In MULTIPLE Section Units
87	1	024-01466-17	MULTIPLE Gear Set With 1.75" Gear Width and SAE "BB" (1" Dia. 15 TOOTH) SPLINE with 1.937" ,Used In MULTIPLE Section Units
87	1	024-01466-15	MULTIPLE Gear Set With 1.5" Gear Width and SAE "BB" (1" Dia. 15 TOOTH) SPLINE with 1.937" ,Used In MULTIPLE Section Units
6	1	024-01394-25	MULTIPLE Gear Set With 2.5" Gear Width and SAE "C" (1-1/4" Dia.-14 TOOTH) SPLINE with 2.187" ,Used In MULTIPLE Section Units
6	1	024-01394-22	MULTIPLE Gear Set With 2.25" Gear Width and SAE "C" (1-1/4" Dia.-14 TOOTH) SPLINE with 2.187" ,Used In MULTIPLE Section Units
6	1	024-01394-20	MULTIPLE Gear Set With 2" Gear Width and SAE "C" (1-1/4" Dia.-14 TOOTH) SPLINE with 2.187" ,Used In MULTIPLE Section Units
6	1	024-01394-17	MULTIPLE Gear Set With 1.75" Gear Width and SAE "C" (1-1/4" Dia.-14 TOOTH) SPLINE with 2.187" ,Used In MULTIPLE Section Units
6	1	024-01394-15	MULTIPLE Gear Set With 1.5" Gear Width and SAE "C" (1-1/4" Dia.-14 TOOTH) SPLINE with 2.187" ,Used In MULTIPLE Section Units
6	1	024-01394-12	MULTIPLE Gear Set With 1.25" Gear Width and SAE "C" (1-1/4" Dia.-14 TOOTH) SPLINE with 2.187" ,Used In MULTIPLE Section Units
6	1	024-01394-10	MULTIPLE Gear Set With 1" Gear Width and SAE "C" (1-1/4" Dia.-14 TOOTH) SPLINE with 2.187" ,Used In MULTIPLE Section Units
6	1	024-01394-07	MULTIPLE Gear Set With 0.75" Gear Width and SAE "C" (1-1/4" Dia.-14 TOOTH) SPLINE with 2.187" ,Used In MULTIPLE Section Units
6	1	024-01394-05	MULTIPLE Gear Set With 0.5" Gear Width and SAE "C" (1-1/4" Dia.-14 TOOTH) SPLINE with 2.187" ,Used In MULTIPLE Section Units
00	1	024-01411-25	MULTIPLE Gear Set With 2.5" Gear Width and SAE "C" (1-1/4" Dia. KEYED) KEYED with 2.187" ,Used In MULTIPLE Section Units
00	1	024-01411-22	MULTIPLE Gear Set With 2.25" Gear Width and SAE "C" (1-1/4" Dia. KEYED) KEYED with 2.187" ,Used In MULTIPLE Section Units
00	1	024-01411-20	MULTIPLE Gear Set With 2" Gear Width and SAE "C" (1-1/4" Dia. KEYED) KEYED with 2.187" ,Used In MULTIPLE Section Units
00	1	024-01411-17	MULTIPLE Gear Set With 1.75" Gear Width and SAE "C" (1-1/4" Dia. KEYED) KEYED with 2.187" ,Used In MULTIPLE Section Units
00	1	024-01411-15	MULTIPLE Gear Set With 1.5" Gear Width and SAE "C" (1-1/4" Dia. KEYED) KEYED with 2.187" ,Used In MULTIPLE Section Units
00	1	024-01411-12	MULTIPLE Gear Set With 1.25" Gear Width and SAE "C" (1-1/4" Dia. KEYED) KEYED with 2.187" ,Used In MULTIPLE Section Units
00	1	024-01411-10	MULTIPLE Gear Set With 1" Gear Width and SAE "C" (1-1/4" Dia. KEYED) KEYED with 2.187" ,Used In MULTIPLE Section Units
00	1	024-01411-07	MULTIPLE Gear Set With 0.75" Gear Width and SAE "C" (1-1/4" Dia. KEYED) KEYED with 2.187" ,Used In MULTIPLE Section Units
00	1	024-01411-05	MULTIPLE Gear Set With 0.5" Gear Width and SAE "C" (1-1/4" Dia. KEYED) KEYED with 2.187" ,Used In MULTIPLE Section Units

## Code QTY Part Number Description

25	1	996-01375-25	MULTIPLE Gear Set with 2.5" Gear Width
22	1	996-01375-22	MULTIPLE Gear Set with 2.25" Gear Width
20	1	996-01375-20	MULTIPLE Gear Set with 2" Gear Width
17	1	996-01375-17	MULTIPLE Gear Set with 1.75" Gear Width
15	1	996-01375-15	MULTIPLE Gear Set with 1.5" Gear Width
12	1	996-01375-12	MULTIPLE Gear Set with 1.25" Gear Width
10	1	996-01375-10	MULTIPLE Gear Set with 1" Gear Width
07	1	996-01375-07	MULTIPLE Gear Set with 0.75" Gear Width
05	1	996-01375-05	MULTIPLE Gear Set with 0.5" Gear Width

## Continental Shaft Codes

<b>Code</b>	<b>QTY</b>	<b>Part Number</b>	<b>Description</b>
-------------	------------	--------------------	--------------------

C 6	1	023-01617	SAE "C" (1-1/4" Dia.-14 TOOTH) SPLINE shaft with 2.1875" Shaft Extension
-----	---	-----------	--------------------------------------------------------------------------

C00	1	023-01619	SAE "C" 1-1/4" Dia. KEYED KEYED shaft with 2.1875" Shaft Extension
-----	---	-----------	--------------------------------------------------------------------

C87	1	023-01618	SAE "BB" (1" Dia. 15 TOOTH) SPLINE shaft with 2.8125" Shaft Extension
-----	---	-----------	-----------------------------------------------------------------------

C99	1	023-01614	SAE "CC" (1-1/2" Dia.-17 TOOTH) SPLINE shaft with 2.4375" Shaft Extension
-----	---	-----------	---------------------------------------------------------------------------

## Drive Shaft Small Parts

Code	QTY	Part Number	Description	Type
------	-----	-------------	-------------	------

## Connecting shaft

Code	QTY	Part Number	Description
1	1	022-01393	CONNECTING SHAFT



# Bearing Carrier Codes

# BSPP

Code	QTY	Part Number	Description
WI	1	576-01391-5477	CCW Pump Dual Outlet with 1.25" BSPP inlet and 1" BSPP top outlet connecting to REAR Plus 1.25" BSPP bottom outlet connecting to FRONT
YI	1	576-01391-6427	CCW Pump NONE with 1" BSPP inlet and 1" BSPP top outlet connecting to REAR Plus 1" BSPP bottom outlet connecting to FRONT
XI	1	576-01391-5427	CCW Pump NONE with 1.25" BSPP inlet and 1" BSPP top outlet connecting to REAR Plus 1" BSPP bottom outlet connecting to FRONT
VI	1	576-01391-5432	CCW Pump NONE with 1.25" BSPP inlet and 1.25" BSPP top outlet connecting to REAR Plus 1.25" BSPP bottom outlet connecting to FRONT
RI	1	576-01391-4478	CCW Pump NONE with 1.5" BSPP inlet and 1" BSPP top outlet connecting to REAR Plus 1.5" BSPP bottom outlet connecting to FRONT
TI	1	576-01391-4477	CCW Pump NONE with 1.5" BSPP inlet and 1" BSPP top outlet connecting to REAR Plus 1.25" BSPP bottom outlet connecting to FRONT
UI	1	576-01391-4427	CCW Pump NONE with 1.5" BSPP inlet and 1" BSPP top outlet connecting to REAR Plus 1" BSPP bottom outlet connecting to FRONT
SI	1	576-01391-4432	CCW Pump NONE with 1.5" BSPP inlet and 1.25" BSPP top outlet connecting to REAR Plus 1.25" BSPP bottom outlet connecting to FRONT
QI	1	576-01391-4481	CCW Pump NONE with 1.5" BSPP inlet and 1.25" BSPP top outlet connecting to REAR Plus 1.5" BSPP bottom outlet connecting to FRONT
PI	1	576-01391-4437	CCW Pump NONE with 1.5" BSPP inlet and 1.5" BSPP top outlet connecting to REAR Plus 1.5" BSPP bottom outlet connecting to FRONT
MI	1	576-01391-3477	CCW Pump NONE with 2" BSPP inlet and 1" BSPP top outlet connecting to REAR Plus 1.25" BSPP bottom outlet connecting to FRONT
OI	1	576-01391-3427	CCW Pump NONE with 2" BSPP inlet and 1" BSPP top outlet connecting to REAR Plus 1" BSPP bottom outlet connecting to FRONT
KI	1	576-01391-3478	CCW Pump NONE with 2" BSPP inlet and 1" BSPP top outlet connecting to REAR Plus 1.5" BSPP bottom outlet connecting to FRONT
LI	1	576-01391-3432	CCW Pump NONE with 2" BSPP inlet and 1.25" BSPP top outlet connecting to REAR Plus 1.25" BSPP bottom outlet connecting to FRONT
JI	1	576-01391-3481	CCW Pump NONE with 2" BSPP inlet and 1.25" BSPP top outlet connecting to REAR Plus 1.5" BSPP bottom outlet connecting to FRONT
GI	1	576-01391-3437	CCW Pump NONE with 2" BSPP inlet and 1.5" BSPP top outlet connecting to REAR Plus 1.5" BSPP bottom outlet connecting to FRONT
IY	1	576-01391-6427	CW Pump NONE with 1" BSPP inlet and 1" BSPP top outlet connecting to FRONT Plus 1" BSPP bottom outlet connecting to REAR
IX	1	576-01391-5427	CW Pump NONE with 1.25" BSPP inlet and 1" BSPP top outlet connecting to FRONT Plus 1" BSPP bottom outlet connecting to REAR
IV	1	576-01391-5432	CW Pump NONE with 1.25" BSPP inlet and 1.25" BSPP top outlet connecting to FRONT Plus 1.25" BSPP bottom outlet connecting to REAR
IW	1	576-01391-5477	CW Pump NONE with 1.25" BSPP inlet and 1.25" BSPP top outlet connecting to FRONT Plus 1" BSPP bottom outlet connecting to REAR
IU	1	576-01391-4427	CW Pump NONE with 1.5" BSPP inlet and 1" BSPP top outlet connecting to FRONT Plus 1" BSPP bottom outlet connecting to REAR
IS	1	576-01391-4432	CW Pump NONE with 1.5" BSPP inlet and 1.25" BSPP top outlet connecting to FRONT Plus 1.25" BSPP bottom outlet connecting to REAR
IT	1	576-01391-4477	CW Pump NONE with 1.5" BSPP inlet and 1.25" BSPP top outlet connecting to FRONT Plus 1" BSPP bottom outlet connecting to REAR
IP	1	576-01391-4437	CW Pump NONE with 1.5" BSPP inlet and 1.5" BSPP top outlet connecting to FRONT Plus 1.5" BSPP bottom outlet connecting to REAR
IQ	1	576-01391-4481	CW Pump NONE with 1.5" BSPP inlet and 1.5" BSPP top outlet connecting to FRONT Plus 1.25" BSPP bottom outlet connecting to REAR
IR	1	576-01391-4478	CW Pump NONE with 1.5" BSPP inlet and 1.5" BSPP top outlet connecting to FRONT Plus 1" BSPP bottom outlet connecting to REAR

# Bearing Carrier Codes

BSPP

## Code QTY Part Number Description

IO	1	576-01391-3427	CW Pump NONE with 2" BSPP inlet and 1" BSPP top outlet connecting to FRONT Plus 1" BSPP bottom outlet connecting to REAR
IL	1	576-01391-3432	CW Pump NONE with 2" BSPP inlet and 1.25" BSPP top outlet connecting to FRONT Plus 1.25" BSPP bottom outlet connecting to REAR
IM	1	576-01391-3477	CW Pump NONE with 2" BSPP inlet and 1.25" BSPP top outlet connecting to FRONT Plus 1" BSPP bottom outlet connecting to REAR
IG	1	576-01391-3437	CW Pump NONE with 2" BSPP inlet and 1.5" BSPP top outlet connecting to FRONT Plus 1.5" BSPP bottom outlet connecting to REAR
IJ	1	576-01391-3481	CW Pump NONE with 2" BSPP inlet and 1.5" BSPP top outlet connecting to FRONT Plus 1.25" BSPP bottom outlet connecting to REAR
IK	1	576-01391-3478	CW Pump NONE with 2" BSPP inlet and 1.5" BSPP top outlet connecting to FRONT Plus 1" BSPP bottom outlet connecting to REAR

# Bearing Carrier Codes

# MSF

## Code QTY Part Number Description

YG	1	576-01392-1527	CCW Pump NONE with 1" MSF inlet and 1" MSF outlet connecting to FRONT
YC	1	576-01391-6527	CCW Pump NONE with 1" MSF inlet and 1" MSF top outlet connecting to REAR Plus 1" MSF bottom outlet connecting to FRONT
XC	1	576-01391-5527	CCW Pump NONE with 1.25" MSF inlet and 1" MSF top outlet connecting to REAR Plus 1" MSF bottom outlet connecting to FRONT
XG	1	576-01392-1577	CCW Pump NONE with 1.25" MSF inlet and 1" MSF outlet connecting to FRONT
VC	1	576-01391-5532	CCW Pump NONE with 1.25" MSF inlet and 1.25" MSF top outlet connecting to REAR Plus 1.25" MSF bottom outlet connecting to FRONT
WC	1	576-01391-5577	CCW Pump NONE with 1.25" MSF inlet and 1.25" MSF top outlet connecting to REAR Plus 1" MSF bottom outlet connecting to FRONT
WG	1	576-01392-1532	CCW Pump NONE with 1.25" MSF inlet and 1.25" MSF outlet connecting to FRONT
VG	1	576-01392-1578	CCW Pump NONE with 1.5" MSF inlet and 1" MSF outlet connecting to FRONT
UC	1	576-01391-4527	CCW Pump NONE with 1.5" MSF inlet and 1" MSF top outlet connecting to REAR Plus 1" MSF bottom outlet connecting to FRONT
SC	1	576-01391-4532	CCW Pump NONE with 1.5" MSF inlet and 1.25" MSF top outlet connecting to REAR Plus 1.25" MSF bottom outlet connecting to FRONT
TC	1	576-01391-4577	CCW Pump NONE with 1.5" MSF inlet and 1.25" MSF top outlet connecting to REAR Plus 1" MSF bottom outlet connecting to FRONT
UG	1	576-01392-1581	CCW Pump NONE with 1.5" MSF inlet and 1.25" MSF outlet connecting to FRONT
TG	1	576-01392-1537	CCW Pump NONE with 1.5" MSF inlet and 1.5" MSF outlet connecting to FRONT
PC	1	576-01391-4537	CCW Pump NONE with 1.5" MSF inlet and 1.5" MSF top outlet connecting to REAR Plus 1.5" MSF bottom outlet connecting to FRONT
QC	1	576-01391-4581	CCW Pump NONE with 1.5" MSF inlet and 1.5" MSF top outlet connecting to REAR Plus 1.25" MSF bottom outlet connecting to FRONT
RC	1	576-01391-4578	CCW Pump NONE with 1.5" MSF inlet and 1.5" MSF top outlet connecting to REAR Plus 1" MSF bottom outlet connecting to FRONT
SG	1	576-01392-1579	CCW Pump NONE with 2" MSF inlet and 1" MSF outlet connecting to FRONT
OC	1	576-01391-3527	CCW Pump NONE with 2" MSF inlet and 1" MSF top outlet connecting to REAR Plus 1" MSF bottom outlet connecting to FRONT
RG	1	576-01392-1582	CCW Pump NONE with 2" MSF inlet and 1.25" MSF outlet connecting to FRONT
LC	1	576-01391-3532	CCW Pump NONE with 2" MSF inlet and 1.25" MSF top outlet connecting to REAR Plus 1.25" MSF bottom outlet connecting to FRONT
MC	1	576-01391-3577	CCW Pump NONE with 2" MSF inlet and 1.25" MSF top outlet connecting to REAR Plus 1" MSF bottom outlet connecting to FRONT
IC	1	576-01391-3537	CCW Pump NONE with 2" MSF inlet and 1.5" MSF top outlet connecting to REAR Plus 1.5" MSF bottom outlet connecting to FRONT
JC	1	576-01391-3581	CCW Pump NONE with 2" MSF inlet and 1.5" MSF top outlet connecting to REAR Plus 1.25" MSF bottom outlet connecting to FRONT
KC	1	576-01391-3578	CCW Pump NONE with 2" MSF inlet and 1.5" MSF top outlet connecting to REAR Plus 1" MSF bottom outlet connecting to FRONT
QG	1	576-01392-1585	CCW Pump NONE with 2" MSF inlet and 1.5" MSF outlet connecting to FRONT
PB	1	576-01392-1596	CCW Pump NONE with 2.5" MSF inlet and 1" MSF outlet connecting to FRONT
GC	1	576-01391-2527	CCW Pump NONE with 2.5" MSF inlet and 1" MSF top outlet connecting to REAR Plus 1" MSF bottom outlet connecting to FRONT
OB	1	576-01392-1583	CCW Pump NONE with 2.5" MSF inlet and 1.25" MSF outlet connecting to FRONT
EC	1	576-01391-2532	CCW Pump NONE with 2.5" MSF inlet and 1.25" MSF top outlet connecting to REAR Plus 1.25" MSF bottom outlet connecting to FRONT

# Bearing Carrier Codes

# MSF

## Code QTY Part Number Description

FC	1	576-01391-2577	CCW Pump NONE with 2.5" MSF inlet and 1.25" MSF top outlet connecting to REAR Plus 1" MSF bottom outlet connecting to FRONT
AC	1	576-01391-2537	CCW Pump NONE with 2.5" MSF inlet and 1.5" MSF top outlet connecting to REAR Plus 1.5" MSF bottom outlet connecting to FRONT
BC	1	576-01391-2581	CCW Pump NONE with 2.5" MSF inlet and 1.5" MSF top outlet connecting to REAR Plus 1.25" MSF bottom outlet connecting to FRONT
DC	1	576-01391-2578	CCW Pump NONE with 2.5" MSF inlet and 1.5" MSF top outlet connecting to REAR Plus 1" MSF bottom outlet connecting to FRONT
MB	1	576-01392-1586	CCW Pump NONE with 2.5" MSF inlet and 1.5" MSF outlet connecting to FRONT
GY	1	576-01392-1527	CW Pump NONE with 1" MSF inlet and 1" MSF outlet connecting to FRONT
CY	1	576-01391-6527	CW Pump NONE with 1" MSF inlet and 1" MSF top outlet connecting to FRONT Plus 1" MSF bottom outlet connecting to REAR
CX	1	576-01391-5527	CW Pump NONE with 1.25" MSF inlet and 1" MSF top outlet connecting to FRONT Plus 1" MSF bottom outlet connecting to REAR
GX	1	576-01392-1577	CW Pump NONE with 1.25" MSF inlet and 1" MSF outlet connecting to FRONT
GW	1	576-01392-1532	CW Pump NONE with 1.25" MSF inlet and 1.25" MSF outlet connecting to FRONT
CV	1	576-01391-5532	CW Pump NONE with 1.25" MSF inlet and 1.25" MSF top outlet connecting to FRONT Plus 1.25" MSF bottom outlet connecting to REAR
CW	1	576-01391-5577	CW Pump NONE with 1.25" MSF inlet and 1.25" MSF top outlet connecting to FRONT Plus 1" MSF bottom outlet connecting to REAR
CU	1	576-01391-4527	CW Pump NONE with 1.5" MSF inlet and 1" MSF top outlet connecting to FRONT Plus 1" MSF bottom outlet connecting to REAR
GV	1	576-01392-1578	CW Pump NONE with 1.5" MSF inlet and 1" MSF outlet connecting to FRONT
GU	1	576-01392-1581	CW Pump NONE with 1.5" MSF inlet and 1.25" MSF outlet connecting to FRONT
CS	1	576-01391-4532	CW Pump NONE with 1.5" MSF inlet and 1.25" MSF top outlet connecting to FRONT Plus 1.25" MSF bottom outlet connecting to REAR
CT	1	576-01391-4577	CW Pump NONE with 1.5" MSF inlet and 1.25" MSF top outlet connecting to FRONT Plus 1" MSF bottom outlet connecting to REAR
CP	1	576-01391-4537	CW Pump NONE with 1.5" MSF inlet and 1.5" MSF top outlet connecting to FRONT Plus 1.5" MSF bottom outlet connecting to REAR
CQ	1	576-01391-4581	CW Pump NONE with 1.5" MSF inlet and 1.5" MSF top outlet connecting to FRONT Plus 1.25" MSF bottom outlet connecting to REAR
CR	1	576-01391-4578	CW Pump NONE with 1.5" MSF inlet and 1.5" MSF top outlet connecting to FRONT Plus 1" MSF bottom outlet connecting to REAR
GT	1	576-01392-1537	CW Pump NONE with 1.5" MSF inlet and 1.5" MSF outlet connecting to FRONT
GS	1	576-01392-1579	CW Pump NONE with 2" MSF inlet and 1" MSF outlet connecting to FRONT
CO	1	576-01391-3527	CW Pump NONE with 2" MSF inlet and 1" MSF top outlet connecting to FRONT Plus 1" MSF bottom outlet connecting to REAR
CL	1	576-01391-3532	CW Pump NONE with 2" MSF inlet and 1.25" MSF top outlet connecting to FRONT Plus 1.25" MSF bottom outlet connecting to REAR
CM	1	576-01391-3577	CW Pump NONE with 2" MSF inlet and 1.25" MSF top outlet connecting to FRONT Plus 1" MSF bottom outlet connecting to REAR
GR	1	576-01392-1582	CW Pump NONE with 2" MSF inlet and 1.25" MSF outlet connecting to FRONT
GQ	1	576-01392-1585	CW Pump NONE with 2" MSF inlet and 1.5" MSF outlet connecting to FRONT
CI	1	576-01391-3537	CW Pump NONE with 2" MSF inlet and 1.5" MSF top outlet connecting to FRONT Plus 1.5" MSF bottom outlet connecting to REAR
CJ	1	576-01391-3581	CW Pump NONE with 2" MSF inlet and 1.5" MSF top outlet connecting to FRONT Plus 1.25" MSF bottom outlet connecting to REAR

# Bearing Carrier Codes

MSF

## Code QTY Part Number Description

CK	1	576-01391-3578	CW Pump NONE with 2" MSF inlet and 1.5" MSF top outlet connecting to FRONT Plus 1" MSF bottom outlet connecting to REAR
CG	1	576-01391-2527	CW Pump NONE with 2.5" MSF inlet and 1" MSF top outlet connecting to FRONT Plus 1" MSF bottom outlet connecting to REAR
BP	1	576-01392-1596	CW Pump NONE with 2.5" MSF inlet and 1" MSF outlet connecting to FRONT
BO	1	576-01392-1583	CW Pump NONE with 2.5" MSF inlet and 1.25" MSF outlet connecting to FRONT
CE	1	576-01391-2532	CW Pump NONE with 2.5" MSF inlet and 1.25" MSF top outlet connecting to FRONT Plus 1.25" MSF bottom outlet connecting to REAR
CF	1	576-01391-2577	CW Pump NONE with 2.5" MSF inlet and 1.25" MSF top outlet connecting to FRONT Plus 1" MSF bottom outlet connecting to REAR
CA	1	576-01391-2537	CW Pump NONE with 2.5" MSF inlet and 1.5" MSF top outlet connecting to FRONT Plus 1.5" MSF bottom outlet connecting to REAR
CB	1	576-01391-2581	CW Pump NONE with 2.5" MSF inlet and 1.5" MSF top outlet connecting to FRONT Plus 1.25" MSF bottom outlet connecting to REAR
CD	1	576-01391-2578	CW Pump NONE with 2.5" MSF inlet and 1.5" MSF top outlet connecting to FRONT Plus 1" MSF bottom outlet connecting to REAR
BM	1	576-01392-1586	CW Pump NONE with 2.5" MSF inlet and 1.5" MSF outlet connecting to FRONT

# Bearing Carrier Codes

# ORB

## Code QTY Part Number Description

C	1	576-01392-1321	CCW Pump NONE with 0.875" ORB inlet and BLANK ORB outlet connecting to BLANK
YF	1	576-01391-6327	CCW Pump NONE with 1" ORB inlet and 1" ORB top outlet connecting to FRONT Plus 1" ORB bottom outlet connecting to REAR
PJ	1	576-01392-1327	CCW Pump NONE with 1" ORB inlet and 1" ORB outlet connecting to FRONT
XF	1	576-01391-5327	CCW Pump NONE with 1.25" ORB inlet and 1" ORB top outlet connecting to FRONT Plus 1" ORB bottom outlet connecting to REAR
OJ	1	576-01392-1377	CCW Pump NONE with 1.25" ORB inlet and 1" ORB outlet connecting to FRONT
NJ	1	576-01392-1332	CCW Pump NONE with 1.25" ORB inlet and 1.25" ORB outlet connecting to FRONT
VF	1	576-01391-5332	CCW Pump NONE with 1.25" ORB inlet and 1.25" ORB top outlet connecting to FRONT Plus 1.25" ORB bottom outlet connecting to REAR
WF	1	576-01391-5377	CCW Pump NONE with 1.25" ORB inlet and 1.25" ORB top outlet connecting to FRONT Plus 1" ORB bottom outlet connecting to REAR
QO	1	576-01392-7332	CCW Pump NONE with 1.25" ORB inlet and 1.25" ORB outlet connecting to THRU
UF	1	576-01391-4327	CCW Pump NONE with 1.5" ORB inlet and 1" ORB top outlet connecting to FRONT Plus 1" ORB bottom outlet connecting to REAR
MJ	1	576-01392-1378	CCW Pump NONE with 1.5" ORB inlet and 1" ORB outlet connecting to FRONT
LJ	1	576-01392-1381	CCW Pump NONE with 1.5" ORB inlet and 1.25" ORB outlet connecting to FRONT
SF	1	576-01391-4332	CCW Pump NONE with 1.5" ORB inlet and 1.25" ORB top outlet connecting to FRONT Plus 1.25" ORB bottom outlet connecting to REAR
TF	1	576-01391-4377	CCW Pump NONE with 1.5" ORB inlet and 1.25" ORB top outlet connecting to FRONT Plus 1" ORB bottom outlet connecting to REAR
PO	1	576-01392-7381	CCW Pump NONE with 1.5" ORB inlet and 1.25" ORB outlet connecting to THRU
MO	1	576-01392-7337	CCW Pump NONE with 1.5" ORB inlet and 1.5" ORB outlet connecting to THRU
PF	1	576-01391-4337	CCW Pump NONE with 1.5" ORB inlet and 1.5" ORB top outlet connecting to FRONT Plus 1.5" ORB bottom outlet connecting to REAR
QF	1	576-01391-4381	CCW Pump NONE with 1.5" ORB inlet and 1.5" ORB top outlet connecting to FRONT Plus 1.25" ORB bottom outlet connecting to REAR
RF	1	576-01391-4378	CCW Pump NONE with 1.5" ORB inlet and 1.5" ORB top outlet connecting to FRONT Plus 1" ORB bottom outlet connecting to REAR
KJ	1	576-01392-1337	CCW Pump NONE with 1.5" ORB inlet and 1.5" ORB outlet connecting to FRONT
EJ	1	576-01392-1379	CCW Pump NONE with 2" ORB inlet and 1" ORB outlet connecting to FRONT
OF	1	576-01391-3327	CCW Pump NONE with 2" ORB inlet and 1" ORB top outlet connecting to FRONT Plus 1" ORB bottom outlet connecting to REAR
LF	1	576-01391-3332	CCW Pump NONE with 2" ORB inlet and 1.25" ORB top outlet connecting to FRONT Plus 1.25" ORB bottom outlet connecting to REAR
MF	1	576-01391-3377	CCW Pump NONE with 2" ORB inlet and 1.25" ORB top outlet connecting to FRONT Plus 1" ORB bottom outlet connecting to REAR
BJ	1	576-01392-1382	CCW Pump NONE with 2" ORB inlet and 1.25" ORB outlet connecting to FRONT
LO	1	576-01392-7382	CCW Pump NONE with 2" ORB inlet and 1.25" ORB outlet connecting to THRU
DO	1	576-01392-7385	CCW Pump NONE with 2" ORB inlet and 1.5" ORB outlet connecting to THRU
AJ	1	576-01392-1385	CCW Pump NONE with 2" ORB inlet and 1.5" ORB outlet connecting to FRONT
IF	1	576-01391-3337	CCW Pump NONE with 2" ORB inlet and 1.5" ORB top outlet connecting to FRONT Plus 1.5" ORB bottom outlet connecting to REAR
JF	1	576-01391-3381	CCW Pump NONE with 2" ORB inlet and 1.5" ORB top outlet connecting to FRONT Plus 1.25" ORB bottom outlet connecting to REAR

# Bearing Carrier Codes

# ORB

Code	QTY	Part Number	Description
KF	1	576-01391-3378	CCW Pump NONE with 2" ORB inlet and 1.5" ORB top outlet connecting to FRONT Plus 1" ORB bottom outlet connecting to REAR
B	1	576-01392-1321	CW Pump NONE with 0.875" ORB inlet and BLANK ORB outlet connecting to BLANK
JP	1	576-01392-1327	CW Pump NONE with 1" ORB inlet and 1" ORB outlet connecting to FRONT
FY	1	576-01391-6327	CW Pump NONE with 1" ORB inlet and 1" ORB top outlet connecting to FRONT Plus 1" ORB bottom outlet connecting to REAR
FX	1	576-01391-5327	CW Pump NONE with 1.25" ORB inlet and 1" ORB top outlet connecting to FRONT Plus 1" ORB bottom outlet connecting to REAR
JO	1	576-01392-1377	CW Pump NONE with 1.25" ORB inlet and 1" ORB outlet connecting to FRONT
JN	1	576-01392-1332	CW Pump NONE with 1.25" ORB inlet and 1.25" ORB outlet connecting to FRONT
FV	1	576-01391-5332	CW Pump NONE with 1.25" ORB inlet and 1.25" ORB top outlet connecting to FRONT Plus 1.25" ORB bottom outlet connecting to REAR
FW	1	576-01391-5377	CW Pump NONE with 1.25" ORB inlet and 1.25" ORB top outlet connecting to FRONT Plus 1" ORB bottom outlet connecting to REAR
OQ	1	576-01392-7332	CW Pump NONE with 1.25" ORB inlet and 1.25" ORB outlet connecting to THRU
FU	1	576-01391-4327	CW Pump NONE with 1.5" ORB inlet and 1" ORB top outlet connecting to FRONT Plus 1" ORB bottom outlet connecting to REAR
JM	1	576-01392-1378	CW Pump NONE with 1.5" ORB inlet and 1" ORB outlet connecting to FRONT
JL	1	576-01392-1381	CW Pump NONE with 1.5" ORB inlet and 1.25" ORB outlet connecting to FRONT
FS	1	576-01391-4332	CW Pump NONE with 1.5" ORB inlet and 1.25" ORB top outlet connecting to FRONT Plus 1.25" ORB bottom outlet connecting to REAR
FT	1	576-01391-4377	CW Pump NONE with 1.5" ORB inlet and 1.25" ORB top outlet connecting to FRONT Plus 1" ORB bottom outlet connecting to REAR
OP	1	576-01392-7381	CW Pump NONE with 1.5" ORB inlet and 1.25" ORB outlet connecting to THRU
OM	1	576-01392-7337	CW Pump NONE with 1.5" ORB inlet and 1.5" ORB outlet connecting to THRU
FP	1	576-01391-4337	CW Pump NONE with 1.5" ORB inlet and 1.5" ORB top outlet connecting to FRONT Plus 1.5" ORB bottom outlet connecting to REAR
FQ	1	576-01391-4381	CW Pump NONE with 1.5" ORB inlet and 1.5" ORB top outlet connecting to FRONT Plus 1.25" ORB bottom outlet connecting to REAR
FR	1	576-01391-4378	CW Pump NONE with 1.5" ORB inlet and 1.5" ORB top outlet connecting to FRONT Plus 1" ORB bottom outlet connecting to REAR
JK	1	576-01392-1337	CW Pump NONE with 1.5" ORB inlet and 1.5" ORB outlet connecting to FRONT
FO	1	576-01391-3327	CW Pump NONE with 2" ORB inlet and 1" ORB top outlet connecting to FRONT Plus 1" ORB bottom outlet connecting to REAR
JE	1	576-01392-1379	CW Pump NONE with 2" ORB inlet and 1" ORB outlet connecting to FRONT
JB	1	576-01392-1382	CW Pump NONE with 2" ORB inlet and 1.25" ORB outlet connecting to FRONT
FL	1	576-01391-3332	CW Pump NONE with 2" ORB inlet and 1.25" ORB top outlet connecting to FRONT Plus 1.25" ORB bottom outlet connecting to REAR
FM	1	576-01391-3377	CW Pump NONE with 2" ORB inlet and 1.25" ORB top outlet connecting to FRONT Plus 1" ORB bottom outlet connecting to REAR
OL	1	576-01392-7382	CW Pump NONE with 2" ORB inlet and 1.25" ORB outlet connecting to THRU
OD	1	576-01392-7385	CW Pump NONE with 2" ORB inlet and 1.5" ORB outlet connecting to THRU
FI	1	576-01391-3337	CW Pump NONE with 2" ORB inlet and 1.5" ORB top outlet connecting to FRONT Plus 1.5" ORB bottom outlet connecting to REAR
FJ	1	576-01391-3381	CW Pump NONE with 2" ORB inlet and 1.5" ORB top outlet connecting to FRONT Plus 1.25" ORB bottom outlet connecting to REAR

# Bearing Carrier Codes

ORB

Code	QTY	Part Number	Description
------	-----	-------------	-------------

FK	1	576-01391-3378	CW Pump NONE with 2" ORB inlet and 1.5" ORB top outlet connecting to FRONT Plus 1" ORB bottom outlet connecting to REAR
----	---	----------------	-------------------------------------------------------------------------------------------------------------------------

JA	1	576-01392-1385	CW Pump NONE with 2" ORB inlet and 1.5" ORB outlet connecting to FRONT
----	---	----------------	------------------------------------------------------------------------



# Bearing Carrier Codes

SF

## Code QTY Part Number Description

PG	1	576-01392-1227	CCW Pump NONE with 1" SF inlet and 1" SF outlet connecting to FRONT
YZ	1	576-01391-6227	CCW Pump NONE with 1" SF inlet and 1" SF top outlet connecting to REAR Plus 1" SF bottom outlet connecting to FRONT
RQ	1	576-01392-1277	CCW Pump NONE with 1.25" SF inlet and 1" SF outlet connecting to REAR
OG	1	576-01392-1277	CCW Pump NONE with 1.25" SF inlet and 1" SF outlet connecting to FRONT
WZ	1	576-01391-5277	CCW Pump NONE with 1.25" SF inlet and 1" SF top outlet connecting to REAR Plus 1.25" SF bottom outlet connecting to FRONT
XZ	1	576-01391-5227	CCW Pump NONE with 1.25" SF inlet and 1" SF top outlet connecting to REAR Plus 1" SF bottom outlet connecting to FRONT
VZ	1	576-01391-5232	CCW Pump NONE with 1.25" SF inlet and 1.25" SF top outlet connecting to REAR Plus 1.25" SF bottom outlet connecting to FRONT
NG	1	576-01392-1232	CCW Pump NONE with 1.25" SF inlet and 1.25" SF outlet connecting to FRONT
QT	1	576-01392-7232	CCW Pump NONE with 1.25" SF inlet and 1.25" SF outlet connecting to THRU
MG	1	576-01392-1276	CCW Pump NONE with 1.5" SF inlet and 1" SF outlet connecting to FRONT
TZ	1	576-01391-4277	CCW Pump NONE with 1.5" SF inlet and 1" SF top outlet connecting to REAR Plus 1.25" SF bottom outlet connecting to FRONT
UZ	1	576-01391-4227	CCW Pump NONE with 1.5" SF inlet and 1" SF top outlet connecting to REAR Plus 1" SF bottom outlet connecting to FRONT
RZ	1	576-01391-4278	CCW Pump NONE with 1.5" SF inlet and 1" SF top outlet connecting to REAR Plus 1.5" SF bottom outlet connecting to FRONT
SZ	1	576-01391-4232	CCW Pump NONE with 1.5" SF inlet and 1.25" SF top outlet connecting to REAR Plus 1.25" SF bottom outlet connecting to FRONT
QZ	1	576-01391-4281	CCW Pump NONE with 1.5" SF inlet and 1.25" SF top outlet connecting to REAR Plus 1.5" SF bottom outlet connecting to FRONT
LG	1	576-01392-1281	CCW Pump NONE with 1.5" SF inlet and 1.25" SF outlet connecting to FRONT
PT	1	576-01392-7281	CCW Pump NONE with 1.5" SF inlet and 1.25" SF outlet connecting to THRU
OT	1	576-01392-7237	CCW Pump NONE with 1.5" SF inlet and 1.5" SF outlet connecting to THRU
KG	1	576-01392-1237	CCW Pump NONE with 1.5" SF inlet and 1.5" SF outlet connecting to FRONT
PZ	1	576-01391-4237	CCW Pump NONE with 1.5" SF inlet and 1.5" SF top outlet connecting to FRONT Plus 1.5" SF bottom outlet connecting to FRONT
EG	1	576-01392-1279	CCW Pump NONE with 2" SF inlet and 1" SF outlet connecting to FRONT
KZ	1	576-01391-3278	CCW Pump NONE with 2" SF inlet and 1" SF top outlet connecting to REAR Plus 1.5" SF bottom outlet connecting to FRONT
MZ	1	576-01391-3277	CCW Pump NONE with 2" SF inlet and 1" SF top outlet connecting to REAR Plus 1.25" SF bottom outlet connecting to FRONT
OZ	1	576-01391-3227	CCW Pump NONE with 2" SF inlet and 1" SF top outlet connecting to REAR Plus 1" SF bottom outlet connecting to FRONT
LZ	1	576-01391-3232	CCW Pump NONE with 2" SF inlet and 1.25" SF top outlet connecting to REAR Plus 1.25" SF bottom outlet connecting to FRONT
JZ	1	576-01391-3281	CCW Pump NONE with 2" SF inlet and 1.25" SF top outlet connecting to REAR Plus 1.5" SF bottom outlet connecting to FRONT
BG	1	576-01392-1282	CCW Pump NONE with 2" SF inlet and 1.25" SF outlet connecting to FRONT
NT	1	576-01392-7282	CCW Pump NONE with 2" SF inlet and 1.25" SF outlet connecting to THRU
MT	1	576-01392-7285	CCW Pump NONE with 2" SF inlet and 1.5" SF outlet connecting to THRU
AG	1	576-01392-1285	CCW Pump NONE with 2" SF inlet and 1.5" SF outlet connecting to FRONT

# Bearing Carrier Codes

SF

Code	QTY	Part Number	Description
IZ	1	576-01391-3237	CCW Pump NONE with 2" SF inlet and 1.5" SF top outlet connecting to REAR Plus 1.5" SF bottom outlet connecting to FRONT
DZ	1	576-01391-2278	CCW Pump NONE with 2.5" SF inlet and 1" SF top outlet connecting to REAR Plus 1.5" SF bottom outlet connecting to FRONT
FZ	1	576-01391-2277	CCW Pump NONE with 2.5" SF inlet and 1" SF top outlet connecting to REAR Plus 1.25" SF bottom outlet connecting to FRONT
GZ	1	576-01391-2227	CCW Pump NONE with 2.5" SF inlet and 1" SF top outlet connecting to REAR Plus 1" SF bottom outlet connecting to FRONT
LB	1	576-01392-1296	CCW Pump NONE with 2.5" SF inlet and 1" SF outlet connecting to FRONT
EZ	1	576-01391-2232	CCW Pump NONE with 2.5" SF inlet and 1.25" SF top outlet connecting to REAR Plus 1.25" SF bottom outlet connecting to FRONT
CZ	1	576-01391-2281	CCW Pump NONE with 2.5" SF inlet and 1.25" SF top outlet connecting to REAR Plus 1.5" SF bottom outlet connecting to FRONT
KB	1	576-01392-1283	CCW Pump NONE with 2.5" SF inlet and 1.25" SF outlet connecting to FRONT
ET	1	576-01392-7283	CCW Pump NONE with 2.5" SF inlet and 1.25" SF outlet connecting to THRU
QM	1	576-01392-1286	CCW Pump NONE with 2.5" SF inlet and 1.5" SF outlet connecting to REAR
BT	1	576-01392-7266	CCW Pump NONE with 2.5" SF inlet and 1.5" SF outlet connecting to THRU
IB	1	576-01392-1286	CCW Pump NONE with 2.5" SF inlet and 1.5" SF outlet connecting to FRONT
BZ	1	576-01391-2237	CCW Pump NONE with 2.5" SF inlet and 1.5" SF top outlet connecting to REAR Plus 1.5" SF bottom outlet connecting to FRONT
ZY	1	576-01391-6227	CW Pump NONE with 1" SF inlet and 1" SF top outlet connecting to FRONT Plus 1" SF bottom outlet connecting to REAR
GP	1	576-01392-1227	CW Pump NONE with 1" SF inlet and 1" SF outlet connecting to FRONT
GO	1	576-01392-1277	CW Pump NONE with 1.25" SF inlet and 1" SF outlet connecting to FRONT
QR	1	576-01392-1277	CW Pump NONE with 1.25" SF inlet and 1" SF outlet connecting to REAR
ZX	1	576-01391-5227	CW Pump NONE with 1.25" SF inlet and 1" SF top outlet connecting to FRONT Plus 1" SF bottom outlet connecting to REAR
ZV	1	576-01391-5232	CW Pump NONE with 1.25" SF inlet and 1.25" SF top outlet connecting to FRONT Plus 1.25" SF bottom outlet connecting to REAR
ZW	1	576-01391-5277	CW Pump NONE with 1.25" SF inlet and 1.25" SF top outlet connecting to FRONT Plus 1" SF bottom outlet connecting to REAR
GN	1	576-01392-1232	CW Pump NONE with 1.25" SF inlet and 1.25" SF outlet connecting to FRONT
TQ	1	576-01392-7232	CW Pump NONE with 1.25" SF inlet and 1.25" SF outlet connecting to THRU
GM	1	576-01392-1276	CW Pump NONE with 1.5" SF inlet and 1" SF outlet connecting to FRONT
ZU	1	576-01391-4227	CW Pump NONE with 1.5" SF inlet and 1" SF top outlet connecting to FRONT Plus 1" SF bottom outlet connecting to REAR
ZS	1	576-01391-4232	CW Pump NONE with 1.5" SF inlet and 1.25" SF top outlet connecting to FRONT Plus 1.25" SF bottom outlet connecting to REAR
ZT	1	576-01391-4277	CW Pump NONE with 1.5" SF inlet and 1.25" SF top outlet connecting to FRONT Plus 1" SF bottom outlet connecting to REAR
GL	1	576-01392-1281	CW Pump NONE with 1.5" SF inlet and 1.25" SF outlet connecting to FRONT
TP	1	576-01392-7281	CW Pump NONE with 1.5" SF inlet and 1.25" SF outlet connecting to THRU
TO	1	576-01392-7237	CW Pump NONE with 1.5" SF inlet and 1.5" SF outlet connecting to THRU
GK	1	576-01392-1237	CW Pump NONE with 1.5" SF inlet and 1.5" SF outlet connecting to FRONT
ZP	1	576-01391-4237	CW Pump NONE with 1.5" SF inlet and 1.5" SF top outlet connecting to FRONT Plus 1.5" SF bottom outlet connecting to REAR

# Bearing Carrier Codes

SF

## Code QTY Part Number Description

ZQ	1	576-01391-4281	CW Pump NONE with 1.5" SF inlet and 1.5" SF top outlet connecting to FRONT Plus 1.25" SF bottom outlet connecting to REAR
ZR	1	576-01391-4278	CW Pump NONE with 1.5" SF inlet and 1.5" SF top outlet connecting to FRONT Plus 1" SF bottom outlet connecting to REAR
ZO	1	576-01391-3227	CW Pump NONE with 2" SF inlet and 1" SF top outlet connecting to FRONT Plus 1" SF bottom outlet connecting to REAR
GE	1	576-01392-1279	CW Pump NONE with 2" SF inlet and 1" SF outlet connecting to FRONT
GB	1	576-01392-1282	CW Pump NONE with 2" SF inlet and 1.25" SF outlet connecting to FRONT
ZL	1	576-01391-3232	CW Pump NONE with 2" SF inlet and 1.25" SF top outlet connecting to FRONT Plus 1.25" SF bottom outlet connecting to REAR
ZM	1	576-01391-3277	CW Pump NONE with 2" SF inlet and 1.25" SF top outlet connecting to FRONT Plus 1" SF bottom outlet connecting to REAR
TN	1	576-01392-7282	CW Pump NONE with 2" SF inlet and 1.25" SF outlet connecting to THRU
TM	1	576-01392-7285	CW Pump NONE with 2" SF inlet and 1.5" SF outlet connecting to THRU
ZI	1	576-01391-3237	CW Pump NONE with 2" SF inlet and 1.5" SF top outlet connecting to FRONT Plus 1.5" SF bottom outlet connecting to REAR
ZJ	1	576-01391-3281	CW Pump NONE with 2" SF inlet and 1.5" SF top outlet connecting to FRONT Plus 1.25" SF bottom outlet connecting to REAR
ZK	1	576-01391-3278	CW Pump NONE with 2" SF inlet and 1.5" SF top outlet connecting to FRONT Plus 1" SF bottom outlet connecting to REAR
GA	1	576-01392-1285	CW Pump NONE with 2" SF inlet and 1.5" SF outlet connecting to FRONT
BL	1	576-01392-1296	CW Pump NONE with 2.5" SF inlet and 1" SF outlet connecting to FRONT
ZG	1	576-01391-2227	CW Pump NONE with 2.5" SF inlet and 1" SF top outlet connecting to FRONT Plus 1" SF bottom outlet connecting to REAR
ZE	1	576-01391-2232	CW Pump NONE with 2.5" SF inlet and 1.25" SF top outlet connecting to FRONT Plus 1.25" SF bottom outlet connecting to REAR
ZF	1	576-01391-2277	CW Pump NONE with 2.5" SF inlet and 1.25" SF top outlet connecting to FRONT Plus 1" SF bottom outlet connecting to REAR
BK	1	576-01392-1283	CW Pump NONE with 2.5" SF inlet and 1.25" SF outlet connecting to FRONT
TE	1	576-01392-7283	CW Pump NONE with 2.5" SF inlet and 1.25" SF outlet connecting to THRU
TB	1	576-01392-7266	CW Pump NONE with 2.5" SF inlet and 1.5" SF outlet connecting to THRU
BI	1	576-01392-1286	CW Pump NONE with 2.5" SF inlet and 1.5" SF outlet connecting to FRONT
ZB	1	576-01391-2237	CW Pump NONE with 2.5" SF inlet and 1.5" SF top outlet connecting to FRONT Plus 1.5" SF bottom outlet connecting to REAR
ZC	1	576-01391-2281	CW Pump NONE with 2.5" SF inlet and 1.5" SF top outlet connecting to FRONT Plus 1.25" SF bottom outlet connecting to REAR
ZD	1	576-01391-2278	CW Pump NONE with 2.5" SF inlet and 1.5" SF top outlet connecting to FRONT Plus 1" SF bottom outlet connecting to REAR
MQ	1	576-01392-1286	CW Pump NONE with 2.5" SF inlet and 1.5" SF outlet connecting to REAR

## Bearing Carrier Small Parts Codes

<b>Code</b>	<b>QTY</b>	<b>Part Number</b>	<b>Description</b>
B	1	565-01270	7/8" ORB PLUG, HOLLOW HEX
C	1	565-01270	7/8" ORB PLUG, HOLLOW HEX